

EGERTON UPDATE

The quarterly magazine for the village of Egerton, Kent

Issue 3 August 2016



Our plans for Egerton's new pub

As Egerton gets ready to welcome The Barrow House into the village, landlords Sarah and Dane Allchorne take us through their plans. The couple also run the popular Milk House in Sissinghurst

We are just a few months away from throwing open the doors of the village pub, and we can't wait to meet everyone, writes Sarah.

Egerton is a beautiful, bustling village known for its clubs, sports, festivals and its community spirit – and from the moment we saw the inn, we knew it had the potential to become an important part of the community again.

With some much-needed love and attention, we're looking forward to bringing the building back to life and pouring our first pints in late September.

So what can you expect?

We'll be open all day, seven days a week, for everything from coffee in the morning, classic pub lunches

And teatime treats to evenings out with friends and family, special occasions, celebratory events and – of course – a cheeky pint in the bar.

To help everyone make the most of the last warm weather, we're putting tables and chairs on an outside terrace and will be improving the garden for little ones to enjoy next summer.

When winter arrives, there'll be crackling fires and comfy seating to make all our guests feel right at home.

Throughout the year, our kitchen will be busy preparing a range of menus using locally-sourced fresh ingredients with traditional pub classics as well as a more adventurous selection of starters, main courses and puddings.

There'll be a light grazing menu for those in the bar, delicious roasts on Sunday

and healthy options for children too.

To wash it all down, there'll be local beers, cask ales and great wines by the glass, including several from nearby vineyards.

What will it look like?

We're striving to create an environment where everyone feels welcome to pop in, whether for the morning papers, a coffee after the school drop off, or simply to catch up with friends at the end of the day. The three new guest bedrooms upstairs and the ground floor will be decorated in a fresh and comfortable style, complementing the building's historic features with a modern palette, contemporary fabrics and as much natural light as possible.

Continued on page 3

INSIDE THIS ISSUE: * Organisers "delighted" as Laughing Event raises over £4,000 for children's cancer charity. Over 150 local people took part in one-minute "Laughathon". See page 13 for details * Cricket Week once again hits the mark hoping to raise £4,000 for good causes. See page 5 for details * Over 120 men, women and children gathered at Egerton School for the 2016 Egerton Bluebell run. See page 34 for details





Saddlers

www.saddlersresidential.co.uk

Your local specialist in the sale and management of village and country residential property in Kent.

-  Extensive Online Marketing on Major Portals Along With Paper Advertising
-  Local Kent Office Along with Central London Office
-  In-House Designed Bespoke Property Brochures
-  Accompanied Viewings
-  In-House Professional Photography
-  Over 60 Years Combined Local Experience Selling in Your Area
-  In-House HD Video Walkthrough Tours
-  98% of Asking Prices Achieved in 2015
-  In-House High Level Photography
-  Award Winning Service



Pop in and see us at:
Reed House, 1-3 Old Ashford Road,
Charing, Kent, TN27 0JG



Tel: 01233 713127

 /saddlersestateagents

 @Saddlersprop

 /SaddlersResidential

 rightmove
Zoopa
Smarter property search

 PrimeLocation
Find the home you deserve

The Telegraph

 THE TIMES

Mail Online

 msn



THE BARROW HOUSE
KITCHEN ♦ VILLAGE PUB ♦ ROOMS

Continued from page 1

We're excited to rename the pub 'The Barrow House'. We have enjoyed finding out about the historical and emotional significance of its previous name, and we love the building's history, dating back as far as 1576. It's one of the reasons we're so enthusiastic about the pub, and we're working hard to maintain its inimitable character. But with a fresh coat of paint and fresh start, we felt the pub needed a new name to mark this exciting new chapter in its life.

We researched the village and were intrigued to learn about Egerton's oldest structure – the round barrow in the field to the east of the village. This unique landmark is a recognised Ancient Monument, thought to date back to the Bronze Age, and it set our imaginations whirring. We visited the British Museum, learnt more about this period of our island's history and pulled together mood boards featuring copper and bronze textures, earthy tones, jewel hues and circular motifs based on the shape of Bronze Age shields.

As many of you know, the requirements of a village pub have changed considerably over the last few decades, sadly resulting in closures across the country. But with our contemporary vision for the pub, we hope this new name will help us to meet the modern needs of the community.

In the digital age, it's also important that we stand out from the crowd in order to attract visitors from further afield and bring more business to the whole village. Kent has 1393 pubs. Nationally there are more than 250 pubs called The George, with the closest in Trottscliffe, Molash, Cranbrook, Leeds, Newnham, Hayes and Teynham. There will only be one pub called The Barrow House, with a unique name that highlights one of the village's most special features.

Shaping your future

Charing and Pluckley are already producing Neighbourhood plans – so does Egerton need one too?



Egerton Parish Council is inviting all residents to attend a special public meeting in October to discuss if a Neighbourhood Plan is needed for the village.

The aim of a Neighbourhood Plan under the Localism Bill is not to prevent new building but to promote it. It is all about growth and development, particularly if a community wants development in the village to take place faster than is proposed in the core planning strategy in the Local Development Plan. A Neighbourhood Plan cannot be used to prevent development but it can influence where that development takes place in the community. Just as importantly, a Neighbourhood Plan is not just there to identify areas of development which local people are comfortable with, but should also help to identify those areas that need protection, so that any growth can be managed and controlled.

One of the biggest choices in a Neighbourhood Plan will be whether a community allocates space for development or not. A formally adopted Neighbourhood Plan carries more weight in the decision making process than the Parish Plan. It is a legal document.

One of the steps required in setting up a Neighbourhood Plan is to consult with local residents – what is good about the village, what is bad and what is their dream for the village in, say, 10 years time?

The Parish Council is holding an open meeting on Wednesday October 19 at 7.30pm in the Millennium Hall, open to every resident, to discuss in more detail how a Neighbourhood Plan works and also whether or not the village should take a Neighbourhood Plan forward.

Please come along – your views are important!

The Egerton Parish Plan

Egerton has already produced its "Parish Plan" – a copy of which was distributed to every home in the village last year.

A Parish Plan is a stock take, a vision and an action plan. It is produced by the community for the community. Parish Plans are holistic and comprehensive in their scope and cover more than just planning issues in a community.

They can provide evidence of a need for funding in the community. They are an influencing tool and they prevent reactivity and firefighting. There are 4,000 plans in place in the country and one third of communities in Kent have them.

Egerton Update is published by Egerton Parish Council and is produced by volunteers. Whilst every effort is made to ensure accuracy in the production of the magazine, any opinions expressed in articles are those of the individual contributors not the Parish Council.



Egerton Cricket Clubs tri-annual 'Cricket Week' took place in the first week of July, and mostly dry weather helped bring in the crowds to watch as Jonathon Elworthy reports



No hourly charges, all fees agreed in advance and your initial meeting is FREE with no obligation on your part.



Tax Advice & Tax Planning



Accounting & Bookkeeping



Business Advice & Support



Regulation & Compliance

Your initial consultation is free and without obligation

Alison Robinson ACMA & Gary Robinson ACMA

T: 01233 756148

M: 07891 654141

E: alison.robinson@aims.co.uk

W: www.alisonrobinson.aims.co.uk

Originally started to raise money for the new pavilion, 'Cricket Week' now continues in a more relaxed style to raise money for the Club and also to make a contribution to local projects and also to Charity. This year the Club was raising money for the Pre-school relocation project and also for CLIC Sargent, a national charity which raises money for child cancer and leukaemia and for support of families with children with cancer.

The first game on Saturday 2nd July (v Elham Valley) started – and was promptly rained off after only seven overs as the skies opened in a deluge.

EGERTON TELECOTTAGE

Computer Centre in the Millennium Hall

Phone: 07990 574214

Need help with your iPad or tablet?

Struggling with Windows 10?

Lost your email?

Can't find your photographs?

We can offer 1-2-1 individual lessons to answer all of your computer questions.

Call or email with an idea of how we can help and book a slot for £10 per hour. (gift vouchers available)

Our Saturday morning clinics are very popular – call in for a coffee and a chat between 10am and 12 noon.

We would love to see you! email: instructor@egerton-kent.co.uk

and find us at www.egerton-kent.co.uk





Sam Wellard makes his debut

But after that, in an early summer where it doesn't seem to have stopped raining, Cricket Week remained dry and even, amazingly, sunny! The 'Cow at Cow Corner' once again, after an absence from the last two Cricket Weeks put in another appearance. Thank you to Sarah Doughty of Egerton Running Club for painting

her! Batsman receive a prize of one pint if they hit the cow on the bounce or a jug of beer if they hit it on the full.

On the Sunday Egerton hosted a Kent Village League match versus high-flying Harbledown. Egerton bowled out Harbledown for 199 and then ticked off the runs with several overs to spare. Monday was an all-day game featuring a team of Egerton Old Boys with Egerton running out comfortable winners.

On Tuesday, another all day match against a team put out by local land agents BTF with an exciting finish as BTF won by two wickets after chasing down Egerton's score of 260 with only a few balls to spare. Wednesday featured a game against an Invitational team from the Kent Village League with Egerton winning this game with ease.

Thursday saw a stiffer test against a strong wandering side from Hertfordshire, The Dragons, who posted a score of 314 runs in their 50 overs. In an exciting finish Egerton needed four runs to win off the last but came up short by one run. On Friday there was Egerton CC's very own short form version of cricket - Zone Cricket. Quick fire 10 overs an innings matches with four teams competing over the course of the day and, with an all-day BBQ and bar, a thoroughly enjoyable day was had by all. Cricket Week closed with a short match between the Clubs youngsters and a lady's invitational side. Club Captain Steve Wellard's son Sam making his debut aged seven in the match. The total raised will be announced soon.



Players enjoyed good cricket and good food!



The famous cow at cow corner!



RICH GORDON
GAS BOILER
SERVICING

LANDLORDS'
CERTIFICATES

Mobile 07780 678855

Home 01233 840041

Pluckley - based



MRS JANE COOPER
GGSM, ARCM, AGSM
01233 714787

Piano lessons
in Charing
Heath

Beginners to
Grade 8



S I PARR



PAINTING & DECORATING

Qualified Decorator

30 years experience

Interior / Exterior

Estimates Free - No VAT

01233 756676

Ruth hands over her gardening gloves



Ruth Russell (far left) has been in charge of the care and upkeep of the gardens and boxes which have enhanced the appearance of the Millennium Hall for the past eight years. At 90 years of age, she has decided to hang up her gardening gloves and hand the responsibility to others in the club. This photograph shows her and her merry band on her last role as organiser.

The WI conveyed its thanks to Ruth for all her hard work over a good number of years. She, together with Kath Hilder, has set standards which we younger ones will strive to uphold, WI chairman Liz Wyndham said.



Mower wanted

The Glebe communal area of grass has traditionally been mown by a local resident from the Glebe or the Street. Denis Harper, Bill Smyth, and more recently John Vickers. Unfortunately, John has moved away and we are looking for someone else to take on the mantle. The lawn mower is provided and any expenses will be paid. We have even had a local resident who has offered their compost heap as a way of disposing of the cuttings. All we need is a volunteer willing to give a little of their time to help keep this area of the village looking good. Another Glebe resident is maintaining the planters and with the pub being refurbished, the centre of the village will look lovely. Can you help? If so, please contact the Parish Clerk, Heather James on 01233 756756501 or email her at clerkeger-tonpc@hotmail.com

WEALDEN · WHEELS

Community Transport for Local Villages

Four Minibuses

8-, 13- & two 16-seaters
Wheelchair accessible
Friendly, volunteer drivers

Membership For

Community Groups,
Clubs, Societies
& Organisations
Families, Care Homes
& Sheltered Housing




Available for Hire

Social Events & Outings
Shopping Trips
Day Centres

Volunteer Drivers

We rely on volunteer drivers,
why not join us?
No Minimum Commitment
Support Your Community
Do Good & Have Fun!

Wealden Wheels is a not-for-profit Company supported by funding from Kent County Council, Ashford Borough Council and Parish Councils of Charing, Challock, Chilham, Egerton, Pluckley & Smarden.

Follow us on
Facebook 

The Old Granary, Pevington Farm, Pluckley, Kent TN27 0PF

Tel 01233 840000 • Mobile 07821 387727

Email wealdenwheels@btconnect.com • www.wealdenwheels.co.uk

End of term school report

Sue Hubbard, Egerton School
Business Manager reports

Another school year has finished and we have said goodbye and good luck to our year six children, who are about to start their adventures at secondary school, after an emotional Leavers Service. It was the culmination of a busy last term for them. They visited the West End to see a performance of *The Lion King*, took part in bikeability sessions, starred in their own memorable production of *Mary Poppins*, enjoyed a special leaver's lunch and finally had lots of fun at their leaver's party.

Since the Easter holidays, the children have ventured out on school trips, taken part in various sporting events and 'made a difference' by cleaning up areas of the school grounds such as the wild-life garden and pond and helping in the local community by cleaning and polishing in the church. We were also excited to welcome in two artists who ran

music workshops for our children. On Monday 4th July, Randolph Matthews ran some interesting vocal workshops for each class and on Thursday 14th July the Gospel Touch Choir performed to the whole school before running a workshop for each year group. Our annual whole school games day took place on Wednesday 13th July, made up of fun activities in the morning and more formal races in the afternoon.

At the end of last term we also said a fond farewell to Mr Lee Selby who had been our headteacher for the last 7 ½ years. As a parting gift the school held a school summer exhibition with all the classes putting on fantastic displays and presentations to parents and invited guests.



Before we know it, September will be here and with it our new reception children. We had a lot of interest in places this year and we are very pleased that we have 30 children joining us to start their journey in full time education.

Moving forward, as we start the new academic year, Mrs Laura Burton and Mrs Jane Voller, our Assistant Headteachers, will take on the Acting Co-Headship of the school until a substantive headteacher is appointed.

Pre-School pizza quiz raises £523



"Five Girls and a Bloke" walked away with top honours at Egerton Pre-School's fundraising Quiz and Pizza night held on May 21st in the Millennium Hall. Over £520 was raised at the event which was sponsored by local accountancy business AIMS.

BOWEN THERAPIST

Gentle treatment for migraines, muscular and back pain, sciatica, frozen shoulder, tennis elbow, etc.

Rebecca Ashton
01233 840468

Email: beccaashton@yahoo.com
www.bowen-technique.co.uk

Qualified Foot Health Practitioner **Mrs Afsaneh Smith**

MCFHP, MAFHP
Hubbards Farm, Lenham Heath

07506 376264
01622 853640

- Routine Chiropody
- Fungal Treatment
- Verruca Treatment
- Diabetic Foot Care
- Corns and Calluses
- In-growing Toenails



**Fordhams
COAL**

Northside
Station Yard
Pluckley

Solid Fuels - Gas - Charcoal - Logs
Firelighters - Disposable BBQ's

T: 01233 840222
F: 01233 840680

W: www.fordhamscoal.co.uk

Approved Coal Merchant
Wood Scheme

Art house on show



Egerton artist Cathy Hill had a very successful Art Exhibition on the 8th-10th July, called "It's a Magical Life!" at Sandway in "Chilston Home Farm" (a newly and beautifully refurbished farm house- now available for holiday and weekend lets - sleeps nine - www.chilston.co.uk).

Cathy would like to thank everyone who came and made it such a lovely weekend full of wonderful people, as well as colourful and exciting pictures. The Exhibition, apart from Cathy's Artwork, also featured sculptures and drawings by Emma Broughton (below) www.emmabroughton.com and textile art by Jeanie Osborne. You can see more of Cathy Hill's artwork at www.cathyhill.co.uk



2017 Festival



A diary date for all, for 2017, is Egerton's full music Festival which runs from 28th June – 2nd July 2017. This promises to be a five day festival of varied and wonderful music making in our village.

egertonupdate@gmail.com



The next issue of *Egerton Update* will be distributed in November. Between now and then we welcome your photographs, and reports, of all the news that is happening in your club or society.

We would also love to receive details of what you have been up to over the autumn months and what is coming up in Egerton during the festive season and winter.

All you do is email your contribution to egertonupdate@gmail.com.

The final copy date for editorial contributions will be October 13th 2016. Please, where you can, send us a photo to illustrate events and meetings reports.

ANGELINA LUMLEY OSTEOPATH

BA HONS; BSC HONS OST; GOSC REGD.

STONE BARN,
STONEBRIDGE GREEN RD,
EGERTON
TN27 9AN

TEL: 01233 756 797
MB: 07958 355 677

ANGELINA@OSTEOPATH-KENT.COM



Music Maestro please



A good audience were transported to a veritable nirvana of delight by five charmed musicians in the Millennium Hall on Sunday 3rd July. Ben Hancox, who first wiled us in Egerton with his musicianship and technique seventeen years ago, led the Sacconi Quartet in a fiery rendering of Haydn's Op 76 No 2. The imagery that they conjured was repeatedly changing, as the fire was dampened to lead us past a love scene, prancing clowns and Hungarian gypsies. For myself, it was the amusingly fresh interpretation of the third movement that delighted my fancy. Freddy Kempf then bestrode the Fazioli grand piano, hired in from central London for the occasion, and gave us a staggeringly poignant presentation of

Chopin's daring Third Sonata. Chopin stretched the capabilities of the piano to its extremes, and Kempf's startling finger facility demonstrated this. His understanding of this mountainous work was revealed as he drove us through each of its extraordinarily demanding movements. The dexterity was enviable, the lightness of touch was Puckish, and the strength of the Finale was tempestuous.

After the interval, the forces combined for Dvořák Second Piano Quintet. This was the work that stole the hearts of the audience. The interplay between the five performers as one and then another took the limelight, and simultaneously the other four receded to accompanying and supportive mode, revealed not only a knowledge of the work, but also a binding relationship of reverence for the printed page. This was a performance that managed to tear at the emotions. Egerton Music festival promoted this concert as an appetiser for the 2016 Music Festival, a guaranteed five days of varied and wonderful music-making for all to enjoy. **Are the dates in your diary - Wednesday 28th June to Sunday 2nd July?**

Egerton Church of England Primary School

Stisted Way, Egerton, Kent
TN27 9DR
Headteacher: Mr L Selby



In our church school we provide a happy, safe environment for learning and working, where we encourage each other to do our best to achieve our goals!

We are a single form entry school with large modern classrooms all set in a beautiful rural location. We offer excellent facilities including a Breakfast Club which opens at 7.45am and an after school Play Club open until 6pm.

We welcome visits to the school, please contact us on 01233 756274 or email office@egerton.kent.sch.uk to arrange a visit and to find out more.

www.egerton.kent.sch.uk

Compassion Humility Inspiration Love Determination

ST JAMES' CHURCH FLOWER GUILD August—October 2016



AUGUST 7 Mrs V Smith
14 Mrs P Stead
21 Mrs J Manuel
28 Mrs B Stevens

SEPTEMBER 4 Mrs J Harman
11 Mrs B Stoodley
18 Mrs W Simkins
25 Mrs R Shrubb

OCTOBER 2 Mrs P Harper
9 Mrs K Crabb
16 Mrs J Kingsnorth
23 Mrs V Smith
30 Mrs J Manuel

R J HOPKINS

Plant Hire



SITE WORK, DITCHING &
POND CLEARANCE

Newland Green, Egerton 756364
(Mobile 07860 924362)

R JAMES & SONS FENCING

The Answer to All Your
Fencing Needs

Agricultural, commercial, domestic,
security, fencing and gates

Tel: 07850 225888
01233 756192

scott@rjamesfencing.co.uk
www.rjamesfencing.co.uk

ALL CREATURES GREAT AND SMALL

House and pet
sitting service

Dawn Busby
01233 714682
07942 045286



CRB checked
Insured
Good references available

Shop and Post Office registered as community asset



Egerton Parish Council writes...

Many will already know that Colin and Fraser have decided to spend more time with their family and are selling the village shop and Post Office.

The shop has been registered by Egerton Parish Council as an asset of community value and the council is investigating the possibility of operating it as a Community Shop and Post Office.

The shop can be owned in one of three ways:

Co-Operative Enterprise: by the potential customers

Community Enterprise: by members of the community

Multi-stakeholder Ownership: by a range of stakeholders, these can be members of the community and organisations that support the objectives of the enterprise.

Information provided by 'The Plunkett Foundation' shows a typical community-owned shop includes a Post Office, is managed by a paid manager together with a high level of volunteers and is supported by the foundation to produce a profitable turnover.

A Community village shop and Post Office can vary greatly in location, size, turnover and facilities offered, the nearest to Egerton being in Benenden. Although larger than our village shop and with a cafe, it is very interesting to see what they have achieved since the privately-owned shop closed in June 2015. The daily running is by a paid manager, four paid part-time managers and 50-60 volunteers.

Egerton Parish Council would welcome ideas and suggestions, the deadline for a decision being mid December. Further information will feature in the next issue of *Egerton Update*.

CARPETS **WOOD** **VINYL** **LAMINATE** **RUGS** **EXTRAS**

**BEST SELLING
SELECTA TWIST
40 oz WOOL TWIST
80% PURE NEW BRITISH WOOL
£19.95 sqm INCLUDING FITTING**

OPEN MONDAY - FRIDAY 9AM - 6PM | SATURDAY 9AM - 5PM

carpets direct

showrooms: SELECTA HOUSE | CHARING HILL | TN27 0NL
www.charingcarpets.co.uk

Proudly rated 9.9 out of 10 by our customers
Checkatrade.com
Where reputation matters

01233 714999



CHARING SELECTA HOUSE
CHARING HILL
TN27 0NL

**COME INSTORE OR GO ONLINE
TO SEE THIS MONTH'S SPECIAL OFFERS!**

STORE OPEN MON-FRI 7AM-6PM SATURDAY 8AM-5PM

IN STORE ♦ www.fixingswarehouse.co.uk ♦ 0870 760 6378

Players raised £340 by singing ...

Chris Stevens, chair of Egerton Players presents Dr Chris Farnham of the Heart of Kent Hospice with a cheque for £340 raised by Egerton Players' charity carol singing last Christmas. The players brought festive cheer to customers at local pubs on Christmas Eve.



Egerton Players are on the look-out for new members.

If you are interested in acting, singing, directing or helping out in general they are always looking for new members and are happy to welcome anyone who wants to get involved. Please email Egerton Players' Secretary, Vanessa, at secretary@egertonplayers.com for more details or a membership application form.

... then wreaked Murder and Mystery in village hall



Around 80 amateur sleuths gathered at Egerton's Millennium Hall to help solve Egerton Players' first ever Murder, Mystery Event. Their production of "Let Sleeping Frogs Die" took place in between courses of a delicious three-course dinner. And guests assembled a number of clues as to who had killed a wealthy French aristocrat before the final announcement revealed that of course, "The Butler did it"!

The Players' performed in the centre of the hall as the audience listened for clues

Broadband roll-out revealed

High Speed Broadband should be available to virtually everyone in the village by the turn of the year, according to George Chandler, the KCC officer in charge of Broadband rollout. George and Darran Hibbert, BT's Project Manager, visited Egerton in June to discuss our high speed broadband rollout with Parish Clerk Heather James and Council Chairman, Richard King. The exchange in the Forstal already has the fibre optic upgrade, but three new cabinets will be installed in the village to complete the coverage. One will be at the bottom of Stone Hill next to the sandbox on Rock Hill Road, another will be at Stonebridge Green on the side of the road just behind the 30mph sign opposite Verrals Oak, and the third one will be on the corner of New Road and Rock Hill Road, just behind the "New Road" street name sign. The first two are on highway land and the third on land owned by the Parish Council which



unanimously agreed at its June meeting to the siting of the box on Parish land.

The cabinet, which is 1.3m high, will be similar to the one at the bottom of Rock Hill Road near the Crockenhill junction. The work will take place later in the year, when the new cabinets will be installed and a fibre optic cable laid to the cabinets from the Forstal exchange. The Forstal is already connected up, but rest of the village won't get a connection until this work has taken place. Hopefully, for those of us that don't yet have it, High Speed Broadband is now only a few months away.

Interim committee make music

Following the AGM of the Egerton Music Club in June, an interim committee was formed. It has met twice. It is organising a concert of prize winning singers from the Royal Northern College of Music in Egerton House on Sunday 2nd October at 6.30pm. Do put it in your diary and come.

Sarah Bracher has agreed to act as Chairman until that concert but will stand down thereafter. Sara Martin has kindly agreed to be Hon. Treasurer but the club needs a new Chairman and Secretary.

These are not necessarily very onerous jobs. If no one comes forward the Club will have to close. This would be a great pity. Please help us find someone and contact one of the committee: Sara Martin [756061], Deborah Fooks [756261], Jerry Crossley [756357], Miles Alexander [07767 664018],

100 Club Winners

The Sports Pavilion 100 Club raises money for the repair and maintenance of Egerton Sports Pavilion. If you are interested in joining the 100 Club, please contact Jonathan Elworthy on: 07802 499577 or by email: info@egerton100club.org. Last quarter's winners were:

May:

£100: Geraldine Dyer
£50: Bertie, Toto & Fergus Berger
£25: Alan Brivio
£25: Sue Johnson
£25: Mike Gornall

June:

£100: Jennifer Buchanan
£50: Jonathan Elworthy
£25: John Lumley
£25: Derek Marks
£25: Chris Gouldstone

July:

£100: Miles Alexander
£50: John & Gill Harper
£25: Dick Noble
£25: Lee Smyth
£25: Michael Epps



MEL SMITH PHOTOGRAPHY

Beautiful Family Portraits

Bespoke Gift Boxes

Rose Farm Studio Rose Farm Road
Pluckley Kent TN27 0RG
01233 840754
www.mel-smith-photography.co.uk

Kingsfords SOLICITORS

Talking your language...

- ◀ Residential Conveyancing
- ◀ Commercial Property & Business Services
- ◀ Wills, Estates and Inheritance Tax
- ◀ French Property
- ◀ Disputes and Court Claims
- ◀ Employment Law
- ◀ Divorce
- ◀ Family Law/Child Protection

OFFICES IN ASHFORD, HYTHE & CRANBROOK

All enquiries to:

01233 665544

Email: enquiries@kingsfords.net

www.kingsfords-solicitors.com

Participants laugh their way to £4,000 for charity



Around 150 people gathered on the Playing Field to support Egerton's very first "Laugh a Minute" event. Organised by local residents Cathy Hill and Beryl Wynter (pictured left), the event was designed to raise money for national cancer charity Clic Sargent. Thanks to a huge amount of support from local people, a magnificent £4,000 was raised. Cathy Hill reports

Torrential rain stopped just in time and the sun came out as people arrived at 3.15pm. Approximately 150 people laughed together for a minute, after five minutes of lively warm up activities, and everyone felt fantastic as a result. (One minute of laughter will boost our immune systems and happiness levels for 24 hours.)

So then there was a very jolly and relaxed atmosphere throughout the rest of the afternoon while people had tea, cake and candy floss and children enjoyed the sports activities in the warm sunshine. There was a raffle with many great prizes donated from local businesses and supporters. John "Webbo" Webster from Ashford Radio 107.1FM came and

said a few words of introduction and a reporter from the *Kentish Express* took photos.

A team of three people from the wonderful children's cancer support charity - "Clic Sargent" were with us and Ed Boyle made a beautiful one minute film of the "Laugh a Minute".



Best of all was that Josh Wilkinson (pictured left), the local boy that everyone was there to support, was well enough to come and join in the fun and laughter, with his family.

Marianne Oliver from the Egerton laughing Club, ran two "Laugh a Minute" sessions at "The Hub" at Towers School, Ashford (Kent Health Needs Education). These were attended by children, parents and teaching staff who collected sponsorship to help Clic Sargent too.



Joshua Lumley Ltd

Antique Oriental & European Rugs



Large stock of antique and contemporary rugs and runners. Valuations and expert advice

Stonebridge Barn, Egerton, Ashford, Kent TN27 9AN

Viewing by appointment only

josh@joshualumley.com
www.joshualumley.com

01233 756072
07900 901756



ROSE FARM STUDIO
FRAMING

Beautiful framing for your
pictures, prints, canvases
& treasured objects

Rose Farm Studio Rose Farm Road Pluckley
Kent TN27 0RG

01233 840754

www.melsmithphotography.co.uk

Living in the moment

Life coach at Charing Surgery, Yvonne Fernando advises us on how to live in the now

Mindfulness continues to grow in popularity - it's been the buzz word on the lips of many celebs, incorporated into schools, colleges, big business (Google now has its own ground-breaking mindfulness training programme called 'Search Inside Yourself'), used in Parliament and also in the US Military for Post Traumatic Stress Disorder.

While it's really important to dream and have goals in the future, research shows that a 'wandering mind' can contribute to unhappiness. So it naturally follows that training our minds to be more present can increase our quota of happiness.

This is where the practice of mindfulness comes into its own. Simply put, it's about being more present in your life - a state of active, open, intentional, attention on the present. When you become mindful, you realise that you are not your thoughts, you become an observer of your thoughts, without judging them. Instead of letting your life go by unchecked, you can experience life and savour each moment. While the physical health benefits are numerous, there are also many scientific studies, which have found mindfulness to be a key element in happiness.

"You can't stop the waves, but you can learn to surf."

~ Jon Kabat-Zinn, the undisputed godfather of mindfulness

When you really think about it, you realise that life is a succession of individual moments. While to the outside world it may seem that many of us share these experiences, the way we process them is entirely individual. In this way, experiences can have a very different meaning for each of us. We use all of our senses to experience a moment, but it's how and what we tune into that's important.

If you'd like to incorporate mindfulness in your daily life, try these tips from Yvonne:

Start Your Day in a Positive Way

Think about how you begin your day because this can set the tone for the rest of it. Do you wake up to the abrupt sound of an alarm clock or natural daylight and the sound of birds? How do you greet others? Do you quickly grab something before flying out the door or mindfully eat breakfast and communicate attentively to those around you? Being more present and paying attention will slow you down (in a good way) and help you become more aware of what's going on for you. You'll get so much more out of your mornings and most likely the rest of the day.

Bathing Rituals

Take time to shower or bath rather than just a quick splash to get clean. Really experience the feel, temperature, pressure and sounds of the water. Pay attention to the colours, textures and fragrance of any creams or gels you use. Notice the feeling, and whatever thoughts arise. The simple act of focusing



your attention on a seemingly routine experience can change the way you feel about it and turn it into something special.

Every Breath You Take

We all take it for granted but simply 'being with your breath' (paying attention to your breathing) helps to bring you into the moment. Taking time each day to just sit and be with your breath can be very calming and powerful. Notice how shallow or deeply you breathe and follow your breath with your mind as it moves through your body. As you get more used to it, you may find your breathing gets slower and deeper.

Yvonne is running two eight week Relaxation Mindfulness Meditation courses this autumn at Charing Surgery starting on Thursday 29 September. One is open to everyone the other is for Ongoing Practice, for those that have already completed one of Yvonne's courses or something similar. For details please contact Yvonne or book online.

You can contact Yvonne on 01233 878474 for an appointment, with any questions or visit www.yvonneferandonlp.co.uk for more details.

RELAXATION
Mindfulness
MEDITATION

8 week programme Thurs 29 Sept – Thurs 17 Nov
9.30am-10.30am & 11am-12pm Ongoing Practice
Sessions by Yvonne Fernando, NLP Master Practitioner & Life Coach at Charing Surgery.
8 week programme £65 / £10 per class
Call Yvonne on 01233 878474 to book or see
www.yvonneferandonlp.co.uk



Vehicle Diagnostics Service

All Mechanical & Servicing
Insurance & Accident Repairs
Air Conditioning

Collins Garage Ltd

Mundy Bois
Egerton

Ashford, Kent
TN27 9EY

Tel/Fax: 01233 840321
Mobile: 07702 075229

Company Reg No: 5493720

Millenium Hall, Elm Close,
Egerton Kent TN27 9DS
07773 600982
egertonpre-school@btinternet.com



Norman receives 'honneur' from French President

The President of the French Republic has honoured a local resident. Norman Cornwell has just received the honour of *Chavalier* in the *Ordre National de la Legion d'Honneur* in recognition of his service in the Liberation of France During World War Two.

Norman (pictured below with his medal), who is 90 years old, joined the infantry in the First Battalion Hampshire Regiment Fifty Division when he was 18 years old in 1944 and was immediately posted to France.

He subsequently saw military service in Palestine and Cyprus, where



he was promoted to the rank of Sargeant.

Following military service Norman worked for 40 years in the local building trade living in Smarden, and then 15 years ago, moving into Egerton.

Born in Hawkhurst he met his future wife, Ethel, in Kent as she often holidayed in Grafty Green – and stayed there during the war years. They had their first date at a dance in Headcorn.

Norman and Ethel (pictured above) have now been married for 68 years and they have two children, six grandchildren and seven great grandchildren, with another on the way.



CASCADE

INSURANCE

**Local Insurance Brokers
who can cover your**

HOME

**Buildings
Contents
Travel
Car**

BUSINESS

**Home Offices
Tradesman
Salons
Liability**

Call Mark on 01233 840 505 or 07444 955 863 for a quote or advice

www.cascadeins.co.uk

Cascade Insurance Services Ltd is an Appointed Representative of Ten Insurance Services Ltd who are authorised & regulated by the Financial Conduct Authority. Financial Conduct Authority registration number 671766

Sheila and Alan's final fly-past



Sheila Palmer writes:

Many, many people from all over the world have visited this memorial during the last few years. Some worked or flew from here, some escorted gliders to Normandy, others were relatives of those brave young pilots and others just passing through. Alan and I have been organising the annual services here for 38 years and now, at 86 and 88 feel we must 'call it a day', thus sadly this year will be our last. The Revd Sheila Cox has kindly said she will take the service here on Sunday August 21st at 2-30pm. We have been promised a flypast--weather permitting--by a plane or planes from the Battle of Britain Memorial Flight to follow. Alan and I will continue to maintain the Memorial and attend the Remembrance Service in the Church in November. We hope to see as many of you as possible at the service on Sunday August 21st to show your gratitude to these young pilots who gave their lives to give us the freedom we have today. Thank you.

Pluckley Quilt & Crafts show

Pluckley Village Hall is holding its third Quilt and Craft Show on Saturday and Sunday, 24th and 25th September 2016. Open from 10.30am until 5.00pm each day, the entrance cost of £5 includes a drink and eats as well as access to an amazing exhibition of quilts, patchwork and other needlecraft and several associated traders. The organisers are delighted to be able to have showcases this year from Mandy Munroe and the late Sue Russell, plus a collection of beautiful locally-made quilts, some of which are expected to be on sale. The organisers are actively looking for local exhibits so if you have any needlecraft, patchwork items, or quilts that you would like displayed please get in touch. Contact Judy on 01233 840280 or email judith.pool@plucklev.net for further information or if you have any work to show off!



Happy Healthy Smile: Happy Healthy You!

Golding House Dental Practice

Cranbrook High Street

01580 713230

www.goldinghouse.co.uk

Millennium Hall Update



Chairman of the Village Hall Committee Sue Johnson reports:

FINANCE: At the Annual General Meeting on 11th May, the Treasurer reported a very small surplus of £284 for 2015/16. To help meet rising expenses and maintenance costs it is likely that the hourly rate for hiring the Hall will have to be increased in 2017. **CHAIRS:** Users of the village hall are reminded that there are 40 grey plastic chairs stored at the back of the stage which can be taken outside. The new fabric-covered chairs are for indoor use only.

J SKILTON 4 RUBBISH CLEARED SERVICE

HOUSEHOLD, GARDEN, Hardcore, ETC.

SMALL TREES AND HEDGES CUT AND CLEARED

BETTER THAN A SKIP - WE LOAD IT

ALL AREAS COVERED

EST 1998

E A REG

Phone John/Jayne 07885 944876 Anytime

jayne.skilton@btinternet.com

PHIPPS MOTORS
of
Smarden
est. 1984
Tel: 01233 770171
www.phippsmotors.co.uk

**Vehicle MOTs,
Servicing & Repairs,
Fault code diagnostics.**

Kenfield Coachworks
Mill Lane, Smarden TN27 9NW
Your local family run garage

Tax Consultation

Ashford Borough Council is highlighting the council tax support consultation that is currently under way and on which it would appreciate the views of affected residents

If you are an affected claimant you should have received a letter from Ashford Borough Council. Council tax support was set up when council tax benefit was abolished in 2013.

It supports individuals and families who need financial help most and encourages people to get back into work

It is a localised system that reduces the amount of council tax charged for those whose combined income, savings and investments fall below a certain level.

Ashford Borough Council says its existing scheme is as fair as possible, upholding the principles of the government's welfare reforms while offering greater support to those who will find that returning to work is more challenging (such as disabled claimants).

The existing scheme has been in place, with some minor changes, for four years. Now all local authorities in Kent have been asked to undertake a comprehensive review of their scheme so that the money available to fund the services that are provided to you by all public serving organisations stretches further.

Ashford Borough Council is required to review the system each year, to make sure that it is retaining the elements required of it by central government – i.e. to encourage people of working age to return to work – and to ensure that it is offering the maximum amount of support that it can afford.

An extensive review of council tax support is now taking place, ahead of a revised scheme being implemented in the 2017-18 financial year.



What's On In Egerton

IN CONCERT'
The Military Wives Choir
(Brompton)
with guest vocalist
Miss Holly Chambers
singing the best of the 30's, 40's, and 50's

in aid of the
'Smokey Paws' Project
putting pet oxygen masks on all of Kent's fire engines
and supporting
The Military Wives Choir Foundation Charity

SATURDAY 8TH OCTOBER 7.30 pm
(doors open 7.00 pm)
EGERTON MILLENIUM VILLAGE HALL
Elm Close, Egerton, TN27 9DS

Interval Bar Licence

Tickets £10 available from: **EGERTON VILLAGE STORES**
or for reservations Chris Wheal 01622 858100

PRESENTED BY KENT FIRE AND RESCUE SERVICE
COMMUNITY VOLUNTEERS

Wishing Mary happiness in Hants



Friends were very sorry to say farewell to long-standing resident Mary Adams-Beck who recently moved out of the village to a residential home in Hampshire, to be close to her family.

Mary had been associated with Egerton for nearly 40 years and her many friends here shall miss her and wish her to enjoy contentment in her new home.

Wealden Insurance Services LLP

Commercial & Personal Insurances



'Parsmere',
Egerton, Ashford,
Kent TN27 9BX
T/F 01233 756520

E: jeff.hopkins@btconnect.com

Wealden Insurance Services is a Limited Liability Partnership No OC300788 Authorised and Regulated by the Financial Conduct Authority

Members: Jeffrey Hopkins, Richard Millen, Michael Wright



RG STUDIOS

PHOTOGRAPHIC

WEDDINGS FAMILIES FASHION COMMERCIAL HEADSHOTS



Visit our Website
www.rgstudios.co.uk
to find out why we are more than
'just' a photographic studio

EMAIL: studio@rgstudios.co.uk

CALL: 01233 623619



Egerton Sports Pavilion

Recreation Room To Let

(approx 6m x 4m plus small, well-equipped kitchen)
Ideal for small parties, club/society meetings, lectures & talks



Fee £5ph (village residents)
Or £7.50ph (non-village residents)
Contact: Bill Smyth
01233 840362

WI Toast Queen's 90th Birthday

Angela Plant reports

Egerton WI have been busy as usual. On May 18th the Group Quiz held at Egerton took place, I am happy to say that Egerton A team came 1st and Egerton B team came joint 2nd, well done to all those who took part! At our meeting on June 1st we enjoyed an enlightening talk from Lee Ault entitled 'Undercover Story' which was about the history of underwear. Lee showed us examples of very early undergarments from liberty bodices to some very strange knickers!! One of the earliest bras was in fact two handkerchiefs knotted together, clearly no lift and separate system then! Thank goodness this is the 21st century and not the 19th century when ladies underwear consisted of nasty instruments of torture to enlarge their bottoms and reduce their waist size thus enhancing their bustles. Following this eye watering talk, we toasted the Queen with a glass of 'bubbly' for her 90th birthday and to Egerton WI for its 97th birthday. On June 7th Shirley Missing one of our members organised a guided walk around Ashford. Eleven of our members took part and they all learnt lots of interesting history and facts about Ashford and thoroughly enjoyed the evening. Also in June, 14 of our members



enjoyed a wonderful day out to Chichester Flower Festival, the knave in the cathedral was a picture with flowers all the way down, well worth going to see and many thanks to Ruth Russell who organised the day.

The Group meeting (Bethersden, Smarden, Westwell and Egerton WI's) held at Egerton on 15th June was a great success. It featured a raffle, a bring and buy stall and our speaker was Richard King telling us all about the fun and games he and his friends had when they took a double decker bus around the world. The competition was for a homemade crown which was won by Claire Foinette.

The meeting held on July 6th was chaired by Ruth Shrubbs standing in for Liz Wyndham and she opened the meeting by welcoming us and two visitors.

Our speaker for the evening was Robin Masters who gave an illuminating talk entitled

FUTURE EVENTS:

Wednesday 3rd August the speaker will be Lee Reynolds 'Life as a Tiller Girl'. The competition is 'Olympic Games theme cake'.

Wednesday 7th September the speaker is Canterbury Dogs Trust, there will also be an exhibition of candlesticks.

Wednesday 5th October the speaker will be Jennifer Ide subject 'Charles Dickens at Gads Hill'. The competition is for the most original recipe for home-made cosmetic or cleaner.

October 3rd, A trip to Windsor Castle : To see HM Queen's clothes.

October 27th. A trip to The Marlowe to see *Chicago*.

October 26th. Autumn Day at The Canterbury Academy.


If you think you may enjoy these events come along at 7:30pm to the Millennium Hall you will be made very welcome. Further information can be found on the Egerton website: <http://www.egerton-kent.co.uk> Press Secretary: Mrs Angela Plant. E-mail: angela787@btinternet.com Telephone: 01233712282

Owls, smugglers and redcappers, telling us that smuggling has been going on since the 13th century to the present day, although the contraband is different. Smuggling went on in the countryside also but the smugglers were called 'owls' as they hooted like an owl when danger lurked. The competition 'An arrangement of wild flowers' was won by Jennie Oliver.

BEGINNERS AND GENERAL CLASSES

YOGA

EGERTON MILLENNIUM HALL



TUESDAYS 6PM AND 7.30PM, THURSDAYS 130PM

DROP-IN CLASSES FROM £6

Fully qualified IYENGAR™ yoga teacher
CONTACT leo@lifebalanceyoga.co.uk or 07775 720183
www.lifebalanceyoga.co.uk

Home heating oil?
You're in safe hands



At Nigel Collison Fuels, we've been providing a seamless and reliable heating oil service for homes across Kent since 1972.

01580 755678 | www.nigelcollisonfuels.co.uk



Our daily doorstep deliverer!

Richard "Ricardo" Dyer is a familiar figure in Egerton — although you have to get up early to see him as he has been delivering milk in the village for nearly three decades! Here he tells us how Egerton became a major part of his life

My association with Egerton began many years before I became its milkman. Some friends and I were on a bus on our way home, we expected the bus to stop at our usual stop, but on this occasion it continued on. We ended up on a very bouncy mystery tour along narrow country lanes heading into an area we did not know. Eventually the bus stopped and the driver said it was the end of the line. My friends and I stepped out into a village we had never heard of and we had no idea where we were. Luckily there was a phone box, so I rang my Dad and he came and collected us. That was my first introduction to this lovely village - I was just a teenager at the time. Little did I know I'd be back as an adult, serving the local community! I have now been delivering to Egerton for almost 29 years (over half my life!) I'll always remember because I became a milkman the year my first daughter, Jade, was born.

I have always considered myself very fortunate to have been given Egerton as my milk round. It really is a lovely and friendly village. I enjoy the work and it's great not only being part of such a strong community, but also delivering people their necessities for the week, whether it's their breakfast essentials or fresh milk in glass bottles!

It's great working outside and I do think it helps keep me fit and healthy - I rarely get poorly. Not many jobs allow you to see a sunrise every day, let alone full moons and shooting stars! Over the years I have seen some interesting sights whilst doing my round. There was one time when I saw a wallaby skipping along a country lane (not a sight you see every day!) I see foxes, badgers,

even deers and actually, on the Coach Road early one morning, I saw a man walking towards me. As he drew closer, I realised that it was none other than Tom Baker! I knew at the time that he lived in neighbouring village but I was certainly surprised to actually see him. To this day, I have always regretted that I did not ask for his autograph!

Another time, whilst delivering to a farm in the dark, I heard a sound. I approached the source of the sound and to my amazement there was a cow standing in the road! I realised it must have got out of a nearby field so I managed to herd it back, hoping it was the correct field.

Satisfied, I carried on with my round until I heard another sound, this time, much louder and deeper. I approached cautiously and came face to face with a bull! I decided to quit whilst I was ahead and after delivering the milk, I left rather promptly. That is one of the many wonderful things about being a milkman, we're often up and about before any else is even awake and so see things that no one else does.

Whatever the weather, with a handful of exceptions, I have always managed to deliver to my customers. I am always acutely aware that they are looking for that element of



convenience and I am really proud that I am the one they can rely on. Before I go on holiday, I like to let my customers know that I will be away and who will be taking care of them in my absence. It's a great way to stay in touch, as the early hours mean that I rarely get to see my customers. However, the community spirit is really strong here. Over the years, I have shared

Continued on page 20



CHRYSALIS

COMPUTER SOLUTIONS

We're here to help

- **Computer repairs:** everything from replacing failed parts and installing upgrades, cleaning them safely.
- **Broadband:** Resolving issues with ADSL: whether it be diagnosing telephone line problems or replacing failed routers.
- **Software issues:** We offer assistance with MS Office components that refuse to run or Windows (including Windows 10) behaving in strange ways.
- **Networking:** Wireless and wired networks installed and configured. Wireless network security enabled
- **Virus & adware removal**
- **Tablets**
- **Smart phones**
- **Data recovery**

tel: 07957 580604 or
01233 840359
email: alister@chrysalis-cs.com



WEALD SMOKERY

FINE FOOD EXPERIENCE

AWARD WINNING DELICATESSEN

SMOKED FOOD – CHEESES
FINE WINES – GOURMET FOOD



THE KILN ROOM

FINE FOOD EXPERIENCE

BREAKFAST – LUNCH – TEA





LOOK AT THE BLACKBOARD ON THE ROAD OUTSIDE FOR OUR

WEEKLY
25% OFF
OFFER

**Visit us at The Weald Smokery & The Kiln Room,
Mount Farm, Flimwell, East Sussex, TN5 7QL**

OPEN 8.30AM TO 5.30PM MONDAY TO SATURDAY
10AM TO 4PM SUNDAYS FROM 1ST MAY TO 31ST AUG

Visit wealdsmokery.co.uk or call 01580 879601

JOIN US ON :

 Search Weald Smokery
  @wealdsmokery

Our daily doorstep deliverer *continued*

many occasions with them including the birth of my daughters and my milestone birthdays

I have also won *Depot Milkman Of The Year* at least five times and *Regional Milkman Of the Year* once, thanks to my customers. I am very appreciative to them for this and it is partly their kindness that keeps me in this job.

When I first began as a milkman, my depot was at Head-corn and we started delivering at 5am. Nowadays, we start much earlier and cover a wider area. In fact, I get up at half past midnight when I deliver to Egerton. And from being with *milk&more* for so long, it is great to see how much the company has moved with the times to remain relevant and convenient for modern life. In fact, customers

are now able to order and pay online and, as well as fresh milk, we deliver over 250 household items. Plus, if you order before 9pm, it will be included in your next delivery.

Milkmen have been doing this job for over 150 years now and I am proud that I have, so far, contributed to 29 of those. I feel as if I have grown up with my customers and I would like to continue to do so as long as I can.



Gift day at church

In celebration of the Feast Of St James Day on July 25th, the Friends of St James' Church held their annual gift day on the Glebe on Saturday July 23rd and also a special service was held on the Church on Sunday July 24th. The money raised through the gift day is put towards the upkeep of the fabric of Egerton's ancient church. Jenny Oliver manned the collection.

Keeping Egerton in the pink!



Egerton's beautiful flower arrangements in public places have been on display throughout the summer. The Parish Council would like to give thanks to Debbie Humphries for the wonderful display of flowers in the wooden tubs on The Glebe. Debbie took over planting duties from Priscilla Harper who the council would also like to thank for her many years of sterling service in keeping Egerton's public planting so splendid. Also thanks go to Sarah and Jonathon Elworthy for the beautiful hanging baskets at the Sports Pavilion.



New batteries have been placed in all three of Egerton's life-saving public access defibrillators (PADs). The PAD's are situated by the entrance to the village hall, on the white house opposite the post box in the Forstal and one on the wall of the Good Intent Cottages at Stonebridge Green.

CWP fencing
Manufacturers of chestnut fencing products

Chestnut fencing
Cleft post and rail
Gazebos, Arbors
Chestnut sleepers
Hardwood gates
Cladding boards
Stakes and posts

Tel: 07985298221 Fax: 01233632856
www.cwpfencing.co.uk



B. J. LUCKHURST

BUILDERS and DECORATORS
PLUMBING

No job too small
Free Estimates
No VAT

01233 646983
Mobile 07880 734807



Local Church Services



EGERTON FREE CHURCH

AUGUST

August 7th An Elder

August 14th An Elder

August 21st Danny

August 28th An Elder

SEPTEMBER

September 4th Theo

September 11th Danny

September 18th Ambrose

September 25th

HARVEST

THANKSGIVING SERVICE

Rev'd Peter Mitchell, Iden
Green Congregational Church

OCTOBER

October 2nd Theo

October 9th Danny

October 16th Pastor Emeritus
Peter Buss, Bethersden

(Includes a presentation
for Mission Aviation
Fellowship Prayer Sunday)

October 23rd Ambrose

October 30th Theo

Location: Chapel Lane,
Egerton. TN27 9BX.

Services: Sundays at 2.30pm.

Elders or by Guest Speakers.

Contact: Ambrose Oliver

01233 756459

Email:

Egerton-
freechurch@gmail.com

Website:

www.egertonfreechurch.org.uk

Egerton, St. James

AUGUST

Sunday 7th Trinity 11 09.30 Matins

Sunday 14th Trinity 12 09.30 The Eucharist

Sunday 21st Trinity 13 08.00 Holy Communion
09.30 Family Worship

Sunday 28th Trinity 14 10.30 The Eucharist

SEPTEMBER

Sunday 4th Trinity 15 09.30 Matins

Sunday 11th Trinity 16 09.30 Iona Eucharist

Sunday 18th Trinity 17 08.00 Holy Communion
09.30 Family Service
15.30 Messy Church

(Westwell)

Sunday 25th Trinity 18 09.30 The Eucharist

OCTOBER

Sunday 2nd Trinity 19 09.30 Matins

Sunday 9th Trinity 20 09.30 Iona Eucharist

Sunday 16th Trinity 21 08.00 Holy Communion
09.30 Harvest Family Service
15.30 Messy Church

(Westwell)

Sunday 23rd Last after Trinity 09.30 The Eucharist

Sunday 30th All Saints Sunday 10.30 Benefice Communion
(Little Chart)

For details of services in all 7 churches of the G7 Benefice please visit the website: www.g7benefice.org or take a copy of Pew News from the table in the church. You will find a warm welcome in any of the churches.

If you would like to speak to someone about Baptism, Confirmation, a Wedding Service or any other matter please contact:

Reverend Canon Sheila Cox (Rector) 01233 712598
sheilacox@g7benefice.org

Farm View



Local farmer Hilary Jones lets us know what's been happening around the farm over the Spring/Summer

"This has been the season of people in farming working unreasonably hard. Of course, a great deal of what we do is done in summer; and we all take advantage of the long hours of daylight to get more done in a day. Farmers are mad gluttons for work-related punishment anyway. When my partner Ben had a job selling bull semen to dairy farmers for AI, he would say that, at whatever time of day he called round, someone would be milking, and someone would be asleep. Many of them were on three-times-a-day milking; having put a lot into installing up-to-date

milking machinery, they reckoned that the equipment should be working most of the time to earn its keep.

There is at present, though, a shortage of skilled labour on farms. I do get volunteers, mostly students who want to improve their English (the latest two came from New Caledonia in the Pacific); but they can't drive the tractor and wouldn't know where to start on shearing sheep. The great tasks of summer, for us, are: conserving grass for winter, on this farm as round bales of silage wrapped in cling film to keep the air out and make the right sort of fermentation happen with a lot less anxiety than attends hay making; and shearing, a hard, heavy and highly skilled job if ever there was.

You've guessed the problem: it's the weather again. The same unsettled, showery weather that has spoiled everybody's roses has made it impossible to find even the two or three fine days that silage making needs. The grass has gone on with its own programme of going to seed, so the silage when it is made will be more fibrous and less nutritious and, although with the rain there is plenty of it, stock may not come through the winter so well, to their calving and lambing next spring. And sheep can't be shorn when their wool is wet; though problems build up, as a sheep with a heavy wet fleece can get "misaid"- stuck like a beetle lying on her back. (If anybody happens upon an animal in this state, they are kind to turn her over; she will usually totter a bit but soon recover; but if she's left there for long she will die, and no good will come to her lambs). And this muggy weather is highly favourable to the dreaded fly strike: a nasty fly

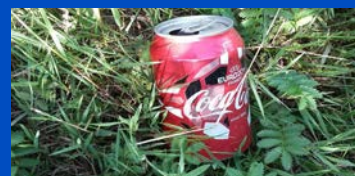
lays eggs on the wet, dirty wool, and the maggots hatch out and proceed to eat into the sheep, attracting by smell more and more of their kind.

I will leave readers who haven't seen it to imagine how agonising; and just say that another marker of climate change is that these flies are becoming active measurably earlier in the year. But a sheep who is out of her wool can just scratch them off.

Don't drop litter!

I shouldn't have to say "Don't leave litter", but recently I have picked up a whole carrier bag full of sweetie papers etc. from a place quite near to, but not on, a footpath.

It looked as if some children had walked there and sat having a lovely picnic; and I would have loved them to come if they had behaved properly. Apart from the mess and bore of having to pick up all these little bits, I have two worries: one that the sheep had nibbled at bits of plastic, and might have swallowed something harmful; and the other that anything which has been in contact with meat has at least a theoretical risk of spreading foot-and-mouth and other diseases.



DON'T LET CRIMINALS RUIN LIVES!

Scams are schemes to con people out of their money

If you think you've been scammed contact Citizens Advice consumer service **03454 04 05 06** for advice.

If you suspect a relative, neighbour or friend has been scammed report it to KCC Trading Standards kent.gov.uk/tradingstandards

Stay one step ahead of the scammers – register for free email alerts about scams tsalerts@kent.gov.uk

twitter @kent_ts
kent-trading-standards



NEED HELP TO CHANGE YOUR LIFE FOR THE BETTER?

COGNITIVE BEHAVIOURAL THERAPY (CBT) CAN HELP.

Step by step guidance to help you work through your concerns and bring about the change you desire.

Tel: 07711 945897

Or 01233 714059

OFFICE IN EGERTON

lynn@counsellingashford.org.uk
<http://www.counsellingashford.org.uk>

Births, Marriages & Deaths



BAPTISMS

Ruby Jennifer ARNOTT (Egerton)
Ruby was baptised at St. James the Great, Egerton on Sunday 24th July 2016

WEDDINGS

Philip THOROGOOD
and

Rhianna SAUVAGE (Egerton)
Philip and Rhianna were married at St. James the Great, Egerton, on Saturday 23rd July 2016

George HAWKINS
and

Jessica BEAN (Egerton)
George and Jessica were married at St. James the Great, Egerton, on Saturday 6th August 2016

FUNERALS

James Leslie TURK (Egerton)
James died on Saturday 11th June 2016 aged 94. His funeral took place at St. James the Great, Egerton, followed by burial in the churchyard, on Friday 1st July 2016.

Gloria AUSTIN (Egerton)
Gloria died on Saturday 18th June 2016 aged 72. Her funeral took place at Charing Crematorium, on Thursday 7th July 2016

Aileen BINKS (Egerton)
Aileen died on Monday 20th June 2016 aged 90. Her funeral took place at St. James the Great, Egerton, followed by burial in Sissinghurst Burial Ground, on Monday 4th July 2016.

Funeral Services also took place for **Roy RAY** and **Ken HARPER** (see Obituaries page 26 and 27 and Notices page 35.)

Thinking therapy

Cognitive Behavioural Therapy (or CBT) is a form of psychotherapy which emphasises the importance of 'how we think effects how we feel and what we do'. Lynn Garbutt is a practitioner living in Egerton. Here she describes the therapy

In simple terms, cognitive behavioural therapy addresses negative patterns and distortions in the way we look at the world and ourselves. As the name suggests, this involves two main components:

Cognitive therapy - examines how negative thoughts or cognitions contribute to a negative emotion.

Behavioural therapy - examines how you react to and behave in situations that trigger a negative emotion. The basic premise of cognitive behavioural therapy is that it's our thoughts or irrational beliefs – not external events – that affect the way we feel.

In other words, it's not the situation that determines how you feel, but your perception of the situation. Your thoughts can block you seeing things that don't fit in with what you believe which can cause you problems if you continue to hold on to them. CBT can help you to identify and challenge any unhealthy beliefs whilst at the same time helping you to identify and reinforce a series of more helpful and rational beliefs – consequently changing the way you feel. Cognitive Behavioural Therapy is not about "positive thinking" it is about thinking realistically and logically in situations that are experienced as highly distressing. Whether it is counselling or cognitive behavioural therapy; in most cases, it takes a number of sessions before the counselling starts to make a difference, and

a regular commitment is required to make the best use of the therapy.

Common problems CBT can help with: Anxiety. Depression. Anger. Low self-confidence/self-esteem. Panic Attacks. Stress Management. Exam or test stress. Speaking in Public. Social Phobia. Jealousy. Insomnia. Relationship problems.

How effective is CBT? Cognitive behavioural therapy is one of the most widely-used therapies and can be effective in the treatment of many emotional disorders. Clinical trials have shown that CBT can reduce the symptoms of many emotional disorders. For some people it can work just as well as drug therapies at treating depression and anxiety disorders. The National Institute for Health and Care Excellence (NICE) recommends CBT for a number of common mental health disorders.

CBT is known as a more short-term therapy. Therefore it may be less suitable if you feel generally unhappy or unfulfilled but don't have troubling symptoms or a particular aspect of your life you want to work on. Or perhaps your problems are less clearly defined or maybe long-term or severely disabling. In which a different type of therapy such as counselling may be suitable because this tends to go on longer and will do justice to the number of problems and to the length of time they've been around.



J.D. MILLS ENGINEERING
AGRICULTURAL AND GENERAL ENGINEERS



Servicing and repairs on agricultural tractors, sprayers and machinery either on farms or at our workshop facilities in Egerton.

We carry out structural steel for the agricultural and construction industry

Our work ranges from small bespoke single hand-rails and gates to being involved with large projects such as the Olympic Stadium.

www.jdmillsengineering.co.uk | info@jdmillsengineering.co.uk | Office: 01233 756660 | Mobile: 07860 809298

What's on in and around Egerton

Tel: 07773 600 982
egertonpreschool@outlook.com

**Spaces available
September 2016**

Millenium Hall, Elm Close
Egerton, Kent, TN27 9DS
Registered Charity No. 1042015
Ofsted Registered No. 127171

www.egertonpreschool.co.uk



**Egerton
Christmas
Fair on the
Glebe
Saturday
December 3rd
2016
2pm-4.30pm**

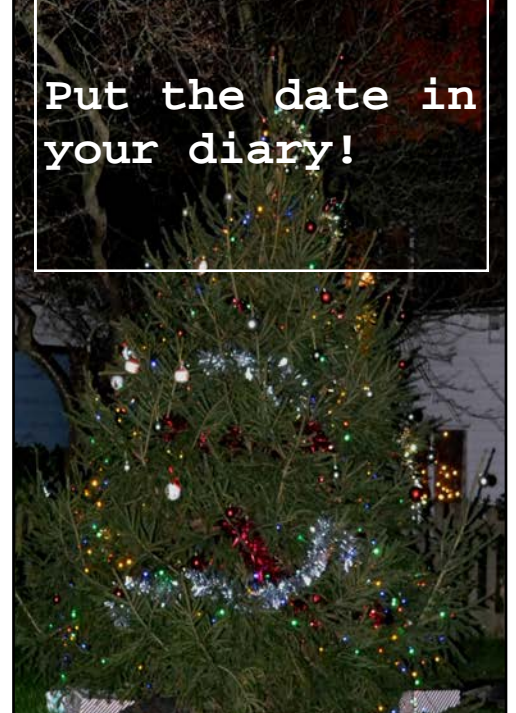
**Put the date in
your diary!**

**Happy School Bag
Collection**

**When: October 18th -10am
Where: Egerton School**



Please donate unwanted items such as clean clothing, paired shoes, handbags, belts, hats, bed-linen, towels, soft toys, jewellery or souvenirs. Place them in a bag bring them to the school. The bags will be collected at 10am on the day.



**Love our preschool?
Join us for
Tough Mudder!**

**&
raise money for
a new building**

Sun Sept 25th 2016

Contact Esther
01233 756260
esthercohen@hotmail.com



Egerton Friends

Our Summer Gardens



*£2 per week for a
cup of Coffee and a
Raffle Ticket.*

11am to 12 noon every Wednesday

*(We don't stop in the Winter -
we meet for a cosy chat in a
local Pub from Oct to May)*

Aug 10 SUE & JIM COOKE
12 HARMERS WAY
(Pre-School Building Fund)

**Aug 17 ETHEL & NORMAN
CORNWALL**
1 OLD SCHOOL COURT
ROCK HILL ROAD
(Pre-School Building Fund)

Aug 24 MARY WALKER
3 WATER VILLAS
ROCK HILL ROAD
(Pre-School Building Fund)

Aug 31 JILL & PETER HOPE
9 THE GLEBE
(Pre-School Building Fund)

Sept 7 JANE & TIM HARMAN
IDEN
IDEN LANE
(Church Flower Guild)

**Public Meeting: Wednesday
October 19th 7.30pm**

**At Egerton's Millennium Hall
"Egerton's Neighbourhood Plan"**



**Help shape the future of the
village
Everyone Welcome**

Meeting hosted by Egerton Parish Council



Book tickets with
Kevin Harper
on 01233 756659
or email
kevinharper623@btinternet.com



Obituaries: Remembering

Gloria's family writes:

Gloria Austin was born Gloria Jean Mound on 21 January 1944; a war-time baby in Newport, Monmouthshire. Gloria's parents, Thomas and Gertrude were proud parents of Gloria, and also her sister Valerie; born after war had ended. Some of Gloria's earliest memories were of walks around the neighbourhood with her father, and even occasional visits to the railway works where Tommy would proudly show off his young family to all around. This must have been fairly unusual at that time, when working fathers did not have the same active involvement with their children's upbringing as today. The early experience, of her parent's selfless dedication to Gloria and Val, almost certainly shaped her childhood interests and studies; then later her decision to become a teacher. So it was that in 1962 Gloria left home in Wales, for teacher training college in Weymouth, and the



three years spent on Dorset's coast that she would recall among the happiest and carefree of her life.

Gloria Jean Mound became Gloria Jean Austin on 3rd August 1968 when she married Norman. In the early 70s they moved to Rainham - and in 1974, to Pluckley. Gloria was for the most part still a full-time mother to David and Peter, then still of pre-school age; though occasionally she taught on a supply basis, and of course was soon involved in village organisations such as playschool, mother and toddler groups, and most crucially the WI where she remained an active WI member, until her health reduced her involvement in the past few years, serving as secretary and treasurer at Egerton. It was

through fellow Pluckley WI member Doris Gann that Gloria came to work at Egerton School. Gloria spent nearly 30 years working there; moving from junior classes to teach the infants. The family moved to Charing Heath in 1977. In 2009, five years since retiring, tests confirmed Multiple Sclerosis. Knowing that her future would increasingly be restricted by the disease; Gloria tried to do as much as she could manage in the early years after diagnosis. She continued to be an active member of the local community, joining the Over 60s in Egerton. Indulging her love of the outdoors and gardening, Gloria met like-minded friends on horticultural holidays and walking holidays. Keen on art and craft, she learned about stained-glass, stone-carving and mosaic art. Holidays with family provided regular escapes over the last three years. In the end it was not the MS, that brought her life to its close but Acute Leukaemia, diagnosed at Christmas 2015. Gloria was to the very end a person of action and it was this practicality which at heart drove her career in teaching, and was the foundation underlying her lifelong friendships and devoted service to her local communities.



Luke Epps

Window Cleaning and Property Maintenance



- Conservatory roof cleaning
- Gutter cleaning and emptying
- Roof repairs and chimney repointing
- Fascia and soffit cleaning and replacement
- Painting
- Patios

To discuss any of your property needs please contact:
 Egerton 01233 756458 / Mobile 07970 774479
 Smeeth 01303 814151 / lukeepps@hotmail.co.uk

Mower Plant Services Limited



Sales Service Parts Repairs Accessories

Sunpatch Farm, Headcorn Rd
Smarden, Kent TN27 8PJ
Tel: 01622 890046
Email: sales@mowerplantservices.co.uk
Open Mon-Fri 8.30am - 5.30pm Saturday 8.30am - 1pm



Antique Furniture Restoration

Susan Surgey

Restorer of Fine Antique Furniture

Qualified in cabinet making and furniture restoration, I have also had over 25 years' professional experience.

The trick is to never over restore, making a tired piece seem as though it has been well looked after all its life.

I have pride in what I do and recycling and reusing play a large part in this.

If you have anything that deserves a new life, for sentimental reasons, investment, or to help the environment, call me for a free quote of advice.

Feel free to ask for references or samples
Including: cabinet work, French polishing, waxing, gilding, veneering, and on site work.

Call Susan
 Tel 01233 877342 or 07712 451104
susansurgey0000@hotmail.com
www.susansurgey.co.uk

g Gloria, Ken & Roy

Ken's family writes:

Ken Harper was born on the 26th May 1923. He and his two brothers Cyril and Dennis lived in a small cottage opposite the Oliver's garage. In 1948 the brothers moved to 7 New Road with their widowed Mother Alice where he lived next door to his cousins Burgon and Margaret.

He left Egerton school at the age of 14 and went to work at Stonehill Farm where he worked for Sir Dudley Harmer and latterly Sebastian Wheeler. If asked he would say that he was a "tractor driver". It was driving tractors through the village and working at Court Lodge Farm that he first noticed his wife to be Priscilla Pitcher. She, like him, was born and bred in Egerton and has lived here all her life. Days were busy and long working on the farm.

The excuse Ken used to meet Priscilla was that he had a new pair of trousers that needed tapering. Priscilla who lived opposite the church would listen out for tractors driving past and then rush to the front door to see if it was Ken. They started going out together when Priscilla was 18 and Ken was 30. They were married on the 19th March 1966 and so earlier this year celebrated their Golden Wedding Anniversary when Ken bought Priscilla a Rose called *Golden Memories* for Priscilla's garden.



Folklore has it that Ken and Priscilla's wedding was enjoyed rather too much by their guests. So much so that his brother Dennis would often say that his wedding some months later was much cheaper because no one touched a drop of alcohol. Their son Kevin was born in 1970 and daughter Gina in 1971. Ken was very proud of children. Despite a not unfounded reputation for preferring to stay at home he did support their activities. He would always go and see Gina when she performed at dance productions at the Stour Centre. One of his annual outings from the early 1990s was to watch the Headcorn Scout Shows which Kevin wrote and performed in. He said he always went on the first night as that is when the Scouts made most mistakes.

Ken was keen on cricket and football. In the early years he spent his holidays going to see Kent play in Canterbury. At weekends he would go to Speedway or to the coast with the family. Ken is probably best known for being an expert grower of vegetables. In 1966 when he and Priscilla moved to their new home the garden was just an orchard. He turned the lower patch into a large vegetable garden. Even last year, despite being 83, he did all the work on his vegetable patch and grew parsnips, onions, 11 rows of potatoes, carrots, beetroot, 3 types of cabbage, 4 varieties of lettuce, tomatoes, cucumbers, courgettes, runner beans, french beans, peas, spring onions, Brussel sprouts, purple sprouting and leeks. This winter was the first time that he did not dig over the ground. When not tending his garden he would sit in the shade watching it and the wildlife.

Although he was always known to be a quiet man he was clearly popular. As well as best man to his brother Cyril he was best man to three others including the sons of the landlords at the George and the son of the landlord at the Rose & Crown.

When work for farm labourers dried up, Ken worked as a gardener. His claim to fame was meeting Bob Marley and Cynthia Payne (both of whom frequented the Rose & Crown). He once also made it into *The Independent* in an article about living individuals who shared traits with fictional characters - in Ken's case from *Cold Comfort Farm*.

Roy's family writes:

"It is with sadness we report the passing of Roy Ray, Landlord of the

Queens Arms in the Forstal, at the end of June. Roy and Joan, who sadly died a few years ago, took over the pub in 2006. They both enjoyed being in Egerton and the company of locals and those from further afield to their pub. Roy was always friendly and welcoming to anyone calling at the pub, whether it be their first visit or one of many. He was keen to host the Egerton Folk & Blues Club and the Open Mic punters at different times each month, and made the musicians and audience feel at home. Nothing was too much trouble for him. He will be greatly missed, and sincere condolences go to his family. Roy's funeral was on Friday 29 July and started with a procession from the Queen's Arms at 1pm. The pub will be closed until 5th August and then Roy's daughter Michelle and husband Robin and family will re-open it. They hope to greet some newcomers and of course their regular customers again in the future."



Pluckley Farm Shop

at the former Weeks Garage, Smarden Road

Open 7 days a week!

Monday - Friday 9 - 6; Saturday 9 - 5; Sunday 10 - 4
Telephone: 01233 840400 www.pluckleyfarmshop.co.uk



Supporting producers of Kent farm and fine foods





Learning to cherish churchyards

For several years now, during Cherishing Churchyards Week in early June, the children from Egerton Primary School have visited St James' Churchyard class by class for fun and learning. The aim of the various activities enjoyed by the children is to make them more aware of the importance of this oasis of peace in the centre of the village for its wildlife and local social history. While the younger children enjoyed quizzes and games, the older ones grouped around the war memorial to learn about life as a soldier during two World Wars – aided by a stirring if crackly rendition of 'Colonel Bogey' on a wind-up horn gramophone. The imaginary and often touching postcards the children wrote to and from the Front will soon be on display in the

children's corner in the church, as will the pictures drawn by other children as part of a sensory game. Our new 'bug hotel', built from old agricultural pallets and the different layers filled with air bricks, bits of pipe and plant stems, fir cones, bark, straw and other items to provide a refuge for many insect species, proved a great attraction, and it was wonderful to see the excited faces of the children at the sudden appearance of a humble woodlouse or spider. There was also a tangible sense of hushed expectation as we peeled back the mats that had been laid down in the long grass at the far end of the churchyard to reveal a squirming knot of baby slow worms. The churchyard also hosted the local art group that week, when members rose to the challenge of drawing and painting the mellow stone of the church itself and its surroundings. The week was rounded off with a walk led by Ishpi Blatchley of the

of the British Lichen Society to study these rather mysterious species – part fungi, part algae – which may appear at first sight as mere blotches of colour on stone and tree. A magnifying glass, however, revealed a fascinating miniature world of moonscapes, mountains and craters of varying shapes and patterns. **We would be very grateful for ANY help with conservation work in the churchyard (mowing, photography, species recording, helping with events, etc.). Please get in touch with Sarah Widd (01233 756460) or Gale King (01233 756592).**

Bat Walk—September 23

The next event to take place in the churchyard will be a Bat Walk on the evening of Friday, 23rd September (time to be confirmed), when expert Shirley Thompson will tell us about these amazing creatures, and there will be the opportunity to use bat detectors to find out which species are present. Look out for the posters nearer the time and come along.

Egerton is a 30mph speed zone

Drivers are reminded that many of the roads through the village come under the 30mph speed limit at all times of night or day. The speed restrictions have been in operation for over a decade.

There are few areas of pavement in the village and Egerton's roads are also regularly used by pedestrians, horse-riders, cyclists, runners and agricultural vehicles.

According to The Royal Society for Prevention of Accidents (RoSPA):

Many car drivers unintentionally exceed the speed limit, often without realising it.

Modern cars are so powerful and comfortable they give drivers little sensation of their speed. It is too easy to creep above the limit, and in particular, many drivers believe it is difficult to drive a modern car at no more than 30 mph on a road with a 30 mph limit.

Drivers are responsible for the speeds at which they choose to drive, but there are some simple and practical things drivers who find it difficult to stay within speed limits can do to help themselves:

1. Check your speedometer regularly, especially when leaving high speed roads
2. Know the limits – look for signs, especially at junctions
3. Assume lamp posts mean 30 mph, until signs say otherwise, but remember it could be 20 mph
4. Remember, speed limits are a maximum, not a target
5. 20's plenty when kids are about – and may even be too fast
6. Try no higher than 3rd gear in a 30 mph limit
7. Recognise what makes you speed – keeping up with traffic, overtaking or being tailgated



8. Concentrate – distracted drivers speed
9. Slow down when entering villages
10. Give yourself time – there's no need to speed and you won't get there quicker

Information from RoSPA website

Seasonal Fayre

Helen Baird runs Pluckley Farm Shop. Here she talks about British pork and how the weather has affected cherry crops

“Bring Back our Britain” so the voters declared! So let’s start by buying British. I mean truly British. Unlike the Brits, the Europeans do tend to buy “home grown” produce – so why don’t we?

We are very fortunate in this corner of Kent to be surrounded by countryside, which by and large is maintained because it is farmed. Don’t just look at the lambs in the field, find their source and buy what you know is local. We can all do our bit. The traceability of our meat should be of paramount importance to us all. I started to keep pigs to recycle vegetable waste and now my love for pigs has led me further than just traceability, but conservation also. Pure native pig breeds have declined over the decades. The Lincolnshire Curly Coat was the last breed to be lost altogether in the 1970s. I won’t ever be able to call myself a farmer but maybe I can call myself a conservationist.

I use pedigree Berkshire boars for my pigs. We have one mixed breeding sow and one pedigree sow at present. We are now working with the British Pig Association to bring through more pedigree Berkshires from different branches of their family tree. Not only is pedigree conservation about traceability, it is about quality. Rare breed free range meat is darker and richer in flavour. Look out for roast pork on the menu at the Rose & Crown. We are grateful to them for their support in promoting the quality of pedigree pork. I’m quite sure that keeping pigs free range improves the quality of the meat. Maintaining health and happiness is very important – pigs can actually get depressed!



Helen with Sarah the half- Berkshire

In my last article I mooted the problems that were probably to come following the never ending wet weather and sure enough we have shortages. The cherry season is upon us but, sadly, with only half the crop of other years. This is true all over Kent. Farming methods, the soil in which the trees grow etc. can vary, but one thing that is common to all these farms are bees! Without pollination the flowers and the fruit will not follow. The bees don’t get busy with their work in the rain - it’s as simple as that. Strawberries need sunlight and warmth to change from green to red and thus supply of the strawberries has been disrupted. One thing that never changes with the Kent fruits though, is quality! Produce that hasn’t travelled holds its flavour. That brings me full circle – buy local!!

For more information see www.pluckleypork.co.uk



Elvey’s taste of Italy

Locals can enjoy a taste of Italy in the Kent Countryside at Elvey Farm. The restaurant features a large menu created by The Baliva Family with head Chef Filippo. Evening meals are served Tuesday to Sunday from 7pm, Sunday Lunch from 12pm and the restaurant also offers Traditional and Chocolate Afternoon Teas from Thursday to Sunday from 2pm.

Housing Reminder

Egerton Housing Association manages seven properties in the village. The properties are managed by an elected committee of local people to provide rented accommodation for local residents at an affordable rate. For the younger generation it means they can start to live an independent life with their partner at a low rent, stay in Egerton close to their family and start saving for their own home in the future. To apply for one of these cottages or for further information contact Sue Palmer, Secretary, on 01233 756686 or email sjpalmer@aol.com.

Friday is Farmers Market day



Egerton’s popular Farmers Market runs every Friday from 2pm—4.30pm in the Millennium Hall. As well as a range of products from local producers, visitors can also enjoy homemade cakes, teas and coffees and refreshments.

RAY JILES



Free quote up to 20 mile radius of Charing
Telephone 07720 034149 or 01233 611939

TREE WORK

NPTC CERTIFIED CONTRACTOR

Local Village Man with over 25 years experience in all aspects of tree surgery.

Re-shaping, Crown reduction, Sectional felling of dangerous/dying trees. Site Clearance. Hedges topped and shaped. Logs and wood chippings supplied. Fully Insured.

Planning your Pension

In each issue of *Egerton Update* I aim to provide some tips around important areas of financial planning. In this, our third issue, I am giving an insight into what is one of the biggest changes in pension legislation in history and what it may mean to you and your family. It is a vital area and involves many different terms/options/decisions. This update article is not designed to be a recommendation, but information to reiterate how important seeking professional advice is both now and on a regular basis, in fact, the need for face to face, tailored financial planning has never been greater

In April 2015, the Government announced new flexibility rules regarding pension funds, finally responding and adapting to social changes as follows:

- * People's working lives have altered drastically from the previous generations
- * There is no longer a job for life
- * There are no new Final Salary Pension Schemes, (where, put simply you know what pension you and your spouse will get, based on your salary and years of membership)
- * People are living longer
- * People are tending towards having no "set" retirement date, moving to part time or self-employment etc and choosing to only partially retire, if retire at all
- * global travelling /employment abroad, the

world is a far smaller place than it used to be. This meant that, with effect from last April, anyone aged 55 or over can start to benefit from their personal pension pots in a number of different ways instead of having to purchase an annuity (income for life). The main problems in the last 10 years or so with annuities have been:

- Lack of flexibility (a one off decision you can't alter later in life)
- Annuity rates very low
- If you die (or your spouse dies) sooner rather than (a lot) later there is nothing available to your family
- Lack of tax efficient planning available

It is important to remember that annuities could still be suitable for some people for some or perhaps all of their income in retirement but for the majority of people the extra freedoms make annuities far less attractive.

What do these words mean?

Defined Benefit scheme – an employer's pension scheme (Final Salary scheme) where you know what pension you will get based upon the rules of the scheme, the number of years' pensionable service and your pre-retirement salary.

Defined Contribution scheme – could be an employer's pension scheme or your own personal pension scheme where you know what is being paid in but you can't

guarantee what you will get out.

Tax Relief – depending on what level of income tax you pay (none, basic, higher or additional) you can get HMRC to effectively pay part of your pension contribution. This will be at least 20% of the overall amount paid in – this is called tax relief. Even non tax payers under age 75 can pay into pensions and get the tax man to pay 20% of the overall amount. Higher and Additional rate tax payers can also get extra tax relief with a further 20% or 25% reduced from their income tax bill.

Tax Free Cash – This is the one off lump sum amount an individual can take from their pension pot with no income tax. It is normally a maximum of 25% of the value of the pension pot but there can be good reasons why someone would NOT necessarily take the maximum Tax Free Cash at once and allow the initial figure to still grow within their fund.

Crystallisation Event – the point at which (between age 55 and 75) someone decides to access some or all of their pension pot. This is extremely important for those people with larger pension pots as it triggers a calculation as to how much of that person's Lifetime Allowance they have used.

Lifetime Allowance

– This is the limit on how much can have built up in all types of pensions before a 55% tax charge applies. The limit is now £1 million but there have been and still are some forms of protection for larger pots. Before you think "oh I'm fine" please remember two main things... Any pensions you already receive (excluding the state pension) can make a very big dent in this limit eg a pension of £25,000 per year which started to be

EMPLOYED SKILLED WORKFORCE | RENOVATIONS & EXTENSIONS
CONVERSIONS & ALTERATIONS | DESIGN & BUILD



A.T. PALMER LTD T: 01233 770077
RESTORATION SPECIALISTS EST.1949 Smarden Business Estate, TN27 8QL

atpalmer.co.uk

received prior to 5/4/2006 uses up £625,000 of the limit. A client aged 40 with pensions valued at £300,000 now (who adds NO MORE to their pensions) at age 65 could potentially have a pension pot in excess of £1,000,000 if it grows at 5% per year.

Annual Allowance – There is a maximum amount each year that can be contributed to pensions which for the majority of people is £40,000 BUT it can be larger by using previous tax years' unused allowances. There is also a lower limit dependent upon your earned income level especially for those who earn in excess of £110,000 who should have a conversation with a professional advisor to see if they are affected by this reduced annual allowance.

So, what about my family if I die or even other people I want to leave my money to?

This is possibly the biggest change for the better. It is now possible to "pass on" your remaining pension pots to literally anyone you want to. As long as they keep the funds in a "pension pot" of some sort they should not suffer any Tax at the time of your death

and then any future money they take from the pot will be taxed according to their own income levels depending on what age the donor is when they pass away.

So what are the main choices now for taking some or all of my pension(s)?

Uncrystallised Funds Pension Lump Sum – this is a one off taxable lump sum and is generally better for smaller pension pots as more cost efficient and where no regular income needed. Beware of the tax on it.

Flexible Access Drawdown – Normally a better use of larger pension pots. This offers flexibility of access, choice of income, the remaining pot stays invested, control of tax to pay, requires regular ongoing monitoring and is great for "passing on" pension pots to family on death.

Annuity or Enhanced Annuity from the Open Market – This could be considered on any amount and is normally a one off decision with a lower but guaranteed income. Any health issues could lead to a higher income (that's what Enhanced Annuity means).

Choices include Level or index-linked income (goes up a little every year), spouse income upon death, Guaranteed Periods on early death etc, but all of these options can negatively influence the income provided. Less popular now than the first two options but still needs consideration. Do not just take the annuity offered from an existing pension provider...it will almost certainly be lower or not as suitable compared to other choices available to you by looking into the open market, again please get advice.

And Finally....

This broad information just scrapes the surface of what is a very personal and long term decision for us all, whether it is to build a sufficient fund for retirement or to start taking money out to enjoy and use in the best way possible. Every one of us is different so I cannot stress the importance of individual advice and guidance. In addition I can almost guarantee if it does not apply to you now it almost certainly will apply in the future or to someone you know. Have a great Summer and please do let us know if we can help.

ML WILKINSON WEALTH MANAGEMENT LTD
martin.wilkinson@sjpp.co.uk
www.wilkinsonwealth.co.uk
Tel: 01233 840783



SCARLETT
 — Financial Services —

- Comprehensive range of Mortgages and Insurance
- Free initial review
- Flexible appointment times available in our private meeting room, or home visits provided
- Our friendly team manage the application process from start to finish
- Over 10 years' experience in assisting clients with their finances

To arrange an appointment with Joanne or Matt call 01233 800555 or email info@scarlettfs.com

Scarlett Financial Services is an appointed representative of Personal Touch Financial Services Limited which is authorised and regulated by the Financial Conduct Authority.

There will be a fee for mortgage advice, the amount will depend upon your circumstances.

A typical fee would be £295 payable at completion for the transaction.

YOUR HOME MAY BE REPOSSESSED IF YOU DO NOT KEEP UP REPAYMENTS ON YOUR MORTGAGE.

Over 60s reach half-century at Christmas!

Sheila Palmer reports on the activities of Egerton's Over 60s Club

April's meeting was a very serious one. Heather Woodward gave a most enlightening presentation on the work of the Kent, Surrey and Sussex Air Ambulance. These medical crews care for people in their most desperate times of their lives and can really make a huge difference. We hear frequently from previous people "When the air ambulance arrived I thought I must be quite serious but I wasn't aware of the level of expertise and equipment on board". Due to special ambulances they are now able to attend accidents at night. Travelling at speeds up to 150 mph they are able to respond rapidly to serious medical traumas. Not only did Heather receive a cheque she also left with the proceeds of a collection taken during tea.

May's meeting was also very interesting. Sarah Gracebrook gave a talk on the "Shadow of the Lamp". She took us through the years of war and how important nursing was during the dreadful battles. Front line hospitals, their poor facilities and the loss of so many limbs, lack of sleep etc how did the nurses ever cope?

We had our first outing of the year in May. We had a most enjoyable coach ride~thanks to Carrs Coaches~our destination being Bexhill. After an extremely delicious fish and chips followed by a variety of desserts lunch at Di Paolo's we spent a short time walking along the seafront. Once again we were entertained by Geoff Hutchinson who was attired and became Mad Jack Fuller. He is a most super actor with perfect diction~even the most hard of hearing find no difficulty in following his tales.

In June we experienced a real Mystery Tour~we were well foxed this time!!! We finally finished up at Lathe Barn where we had the best Strawberry tea consisting of homemade scones, strawberry jam, sundae glasses full of

strawberries and cream and huge slices of Diana's sponges washed down with copious cups of tea.

July's meeting was one of our favourite speakers~Helen Allinson~her subject~"Kentish Village life in Victorian Times" This topic brought back many memories from members when they first moved to Egerton~a long time ago!!~outside loos, no electricity, and no running water~yes not only in Victorian times in our time too!!

Members update~sadly Gloria passed away, we have now lost our Chairman, Secretary and Treasurer. Gloria did wonders for the Club keeping our books up-to-date and producing delicious cakes. David has also done so much for us too and was made an honorary member a short while ago. We will miss her dreadfully. Violet is still hospitalised after a nasty fall while Mary Baker, a new member, is having to take things easy after having some minor strokes.

DIARY DATES

August Lunch-Monday 8th in the Millennium Hall. Please make sure you are booked in. Arrive for 12-30pm bringing glasses and liquid refreshment
Thursday August 25th~outing to Spa Valley Railway with fish and chips lunch on board. This limited is to 30 and is now full. If you wish to go on the waiting list let Jenny know. Cost is £24-50, which includes the train, lunch and coach.

Monday September 12th~an open meeting. Members are requested to bring a guest so they can see we don't play Bingo and the like!!! The idea is to boost the Club's membership. The speaker will be Melanie Gibson-Barton, her subject ~"Bruges-it's more than chocolate"

Tuesday September 20th~The Dreamland outing is cancelled and is replaced by a visit to Manston Spitfire Museum followed by lunch at the Walpole Bay Hotel.

Monday October 10th~The speaker will be Jeff Turner~his subject "For 5 shillings a village was lost".

Monday November 14th~normally our AGM, but is now deferred until Monday December 5th to enable us to celebrate the 50th anniversary of the Club's founding. This will be attended by the Mayor of Ashford, and Carol and Richard Bosworth and "Pip the Clown"

Monday December 5th~AGM along with card exchanges, gifts, carols and Quiz and natter.

Tuesday December 13th is the culmination of our half century year with Xmas lunch at Lathe Barn.

HOME DECORATING SERVICES

Lady Decorator

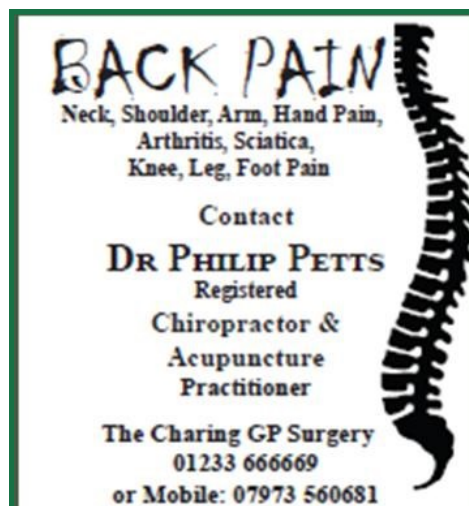
Feel like making a change to your home?

No job too small

For a FREE estimate and to discuss colour schemes...

call Jenny on

07807 419942



BACK PAIN
Neck, Shoulder, Arm, Hand Pain,
Arthritis, Sciatica,
Knee, Leg, Foot Pain

Contact
DR PHILIP PETTS
Registered
Chiropractor &
Acupuncture
Practitioner

The Charing GP Surgery
01233 666669
or Mobile: 07973 560681

Mayor's memorable year



Egerton's Borough Councillor Geraldine Dyer completed her year as Mayor of Ashford in May. As these photographs of her year in office show, Geraldine has been privileged to represent the council at many events—both civic and ceremonial. As our borough councillor Geraldine is available on the first Tuesday of every month at Egerton Millennium Hall between 10-11am. Contact Geraldine on 01233 770213 or email gdyer@ashford.gov.uk.

Where is our missing directions sign?



Eagle-eyed residents may have spotted the missing directions sign on Crockenhill Road. The original sign rusted through and broke off several months ago due to rust.

The post and part of the sign were then replaced—then the direction part of the sign disappeared again leaving just the post standing.

Egerton Parish Council has contacted Kent Country Council to find out when the sign will be fully restored.



OIL BOILER SERVICE

- * Established 1987
- * Friendly family business
- * Prompt professional service
- * Sensible prices
- * Fully qualified and insured

For routine service or emergency breakdowns

Call 01227 760428 or 07768 594147

www.oilboilerskent.co.uk



TW PAVING

- DRIVEWAYS
- PATHS & PATIOS
- GROUNDWORK
- FENCING
- LANDSCAPE GARDENING

**CALL TOM ON
07989 137698**

Ready, steady...run raises £500



Above: runners set off from the school. Below: 10k winners Niki Longmuir and Andy Abbott collect their prizes from Egerton School Headmaster Mr Lee Selby



Egerton's annual Bluebell run had a record breaking turnout at the event in May with over 120 participants taking part. The event saw 79 runners in the Children's Event, 22 runners in the 5K event and 24 runners in the 10K event. Organised by Egerton Running Club and Egerton Primary School over £500 was raised for the school through a combination of entry fees and cakes and refreshments on the day.

Race participants enjoyed fantastic weather and atmosphere and overall it was a great success. Winner of the men's 10k race, Andy Abbott finished the course in 43:18. First female, Niki Longmuir finished in 47:47. In the 5k event first male, Simon Parrin came in at 21:13 and first female, Jennifer Davis finished in 27:33.

THE RESULTS

10k Adults Run

1st male: Andy Abbott

1st female: Niki Longmuir

5k Adults Run

1st male: Simon Parrin

1st Female: Jennifer Davis

1st Egerton school

dad: Stephen Fooks

1st Egerton school

mum: Sarah Doughty

5k Juniors

1st Junior: Jack Harrison

2nd Junior: Ashley Johnson

Children's Run

Key Stage 1

Boys

1st: Archie Abbott

2nd: Jordan Moores

3rd: Kai Harburn-Jones

Girls

1st: Cicely Taylor

2nd: Poppy Berman

3rd: Eve Harcourt

Key Stage 2

Boys

1st: Harry Miles

2nd: Harry Parker

3rd: Sebastian Harrison

Girls

1st: Aoife Boyd

2nd: Sarah Johnson

3rd: Amelie Doughty

Key Stage 3/4

Boys

1st: Harry Hensing

2nd: James Johnson

3rd: Oliver Fooks

Girls

1st: Isobelle Borman

2nd: Chloe Stille

Egerton Builders

Tel. (01233) 333838

Mob. 07821 8968

Email

egsmith@hotmail.co.uk

Extensions
Conversions
Renovations
Alterations
Repairs
Refurbishment

Roofing
Plumbing
Electrical
Carpentry
Brickwork
Plastering

Kitchens
Bathrooms

Domestic
Industrial
Commercial

And all other aspects of building and property maintenance



Your Letters & Notices

A winning combination

What a wonderful concert the Sacconi quartet with Freddy Kempf was. It was brilliant. I have never heard the Dvorak played better. It was a winning combination. It was a delightful programme. Thank you.

Jane S Linton

In Memory of Ken Harper

I would like to thank friends and relatives who attended the funeral service of my late husband Ken. It was a great comfort for me that so many people attended. The messages and cards of sympathy have helped me through this difficult time. I would like to thank everyone who gave a donation in his memory. A total of over £400 was raised for the "Multiple Sclerosis Society".

Priscilla Harper

Memorial service for Gloria Austin

There is a memorial service for Gloria Austin on Saturday 27 August at St James' Church, with gathering afterwards at the village hall for refreshments.

Gloria was at Pilgrims Hospice (Ashford) where she passed-away in the early hours of 18 June after being admitted the previous Sunday. We shall be forever grateful for all the help and support from Pilgrims, and have nominated them for donations rather than flowers.

David and Peter Austin

Thinking of selling in Egerton this Summer

For helpful,
straightforward advice contact:

Ashford:

01233 502222

Tenterden:

01580 766766

The specialist Village agent



HOBBS • PARKER

The Villages

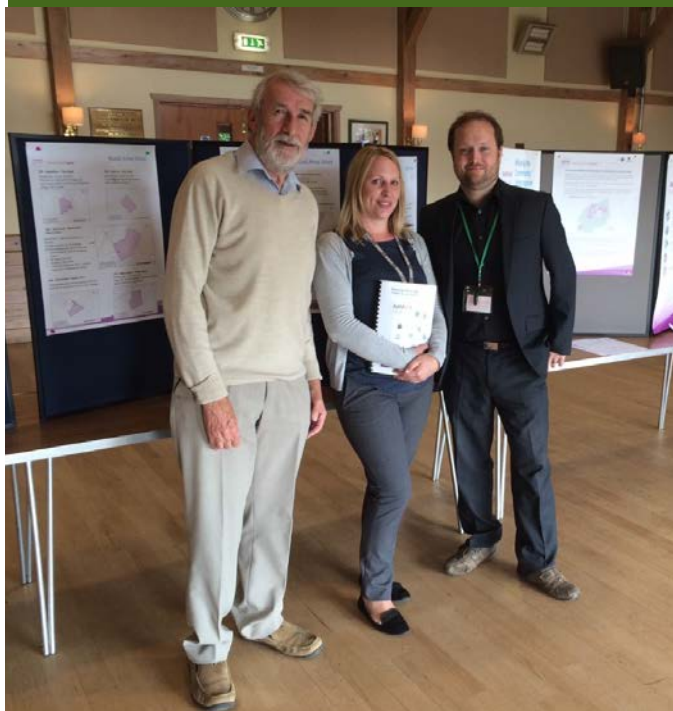


Over 60s day out

On 19th July, a modest party from the Egerton Over 60s enjoyed an excellent lunch at the Grand Burstin Hotel in Folkestone. To round the trip off, the more intrepid climbed the hill in the Golf Course to find the National Coastwatch Institute's Folkestone HQ. After a full and interesting briefing in the training room (housed in a renovated old bunker!), small groups were allowed into the Operations Room.



Ashford's Plan for Egerton to 2030



Representatives of Ashford Borough Council's planning team visited Egerton to consult residents on the latest draft of the Ashford Local Plan for 2030.

Ashford Borough Council is currently preparing the new local plan for the borough, which sets out the land that needs to be provided to accommodate new homes and jobs up to the year 2030. The Borough Council is seeking views from all interested parties to help make any changes that are needed.

As part of an eight-week consultation, a special exhibition was staged in the Millennium Hall to enable local residents to ask questions and find out more about the plan.

A steady stream of visitors took the opportunity to study the draft plan, which shows one area of land in Egerton that has been put forward as a possible development site.

The consultation period closes on August 10th and until then, the draft plan can be accessed at

www.ashford.gov.uk/consult. More information can also be found at www.ashford.gov.uk/local-plan-2030.

Photo: Parish Council Chairman Richard King met Ashford's planning team during the exhibition

R&G Slick Sticks

Country sticks made to order.

Choose a beautiful hand crafted stick from those already hand made from horn, antler, walnut, cherry, burr oak... Or design your own and have it made to measure. Also, Antique Axes available or have a new handle made and fitted for yours.



For more information or a chat please call Rob on 07764273795.

WGJ Plumbing

Warren Johnson

Your Local Plumber

Tel: 01233 840003

Mob: 07936 408853

All aspects of plumbing undertaken including:

Oil Boilers: service / repair

Radiators: move / new

Float valves: repair / replace

Hot water cylinders: replace

Immersion heaters: replace

Rayburns / AGA's: service

Waste pipes: blocked

Showers: leaking / replace

Taps: dripping / replace

Toilets: won't flush / or leak

**Free estimates / No call out charge
Sensible rates / Fully insured**

The Garden in Autumn/Winter



A regular column of a few tips and advice for the amateur gardener

OCTOBER

AUGUST

Flowers

Keep your hanging baskets looking good with daily watering and weekly feeding.

Give Camellias some TLC with regular watering as now they'll be forming next year's flower buds. Dead heading sweet peas is also a must to maximise the flowering season.

Maintain your roses by picking and spraying frequently. Encourage climbing roses by tying in growth.

Fruit & Veg

Pick ripe raspberries and remove straw from underneath strawberries. Prune all summer varieties down to ground level and ensure netting on fruit cages hasn't worn.

Support brussel sprouts and potatoes by earthing them up, and continue to water onions to get the most out of your crop.

Love fresh plants? Sow salad crops into soil

SEPTEMBER

Clear away faded summer bedding plants and plant out pansies, wallflowers and other spring bedding plants

Sow hardy annuals outside to flower for next spring

Deadhead roses regularly

Spray roses to control black spot mildew and aphids

Water camellias regularly as they are now forming next year's flower buds

Dead head annuals, perennials and Roses

Continue spraying for mildew and other fungal diseases

Towards the end of the month prepare to move evergreens and perennials that are growing in the wrong places

Clear up any fallen leaves and other dead plant material to prevent diseases over wintering and remove shelter for vine weevils

Flowers

Dig up and store Dahlia tubers and Gladiolus corms

Plant trees and shrubs and Bare-Root Roses as they establish well if planted now

Winter and spring flowering bulbs such as Daffodils, Narcissi and Crocuses should be planted now in the garden or patio containers.

Vegetables

Sow cauliflower, lettuce, broad beans and peas under cloches in a sheltered spot

Harvest and store marrows and pumpkins before the first frosts

Potatoes, carrots and beetroots can be lifted and stored

Provide deterrents to avoid the ravages of pigeons on brassicas

Dig over ground as it becomes vacant

Lawns

Scarify established lawns to remove dead grass and spike the surface with fork or lawn aerator to help drainage

Reduce mowing frequency and set the blades high. to stop cutting and service the mower .

Film Society starts up in September



Egerton Film Society starts its new Season on Thursday 29th September in the Millennium Hall, but the films for the Autumn have yet to be chosen. The Film Society celebrated a highly successful Spring, with record attendances at screenings of some highly popular British films including 'Suffragette', 'The Lady in the Van' with Maggie Smith, 'Mr Holmes', which starred Ian McKellen, and '45 Years', featuring impressive performances from Charlotte Rampling and Tom Courtenay. Also shown on the big screen were Noel Coward's WW2 classic 'In Which We Serve' and Steven Spielberg's Cold War thriller 'Bridge of Spies' starring Tom Hanks. The season ended in June with a moving British independent film 'x + y'. The committee look forward to presenting an equally varied programme of popular current and classic films for the autumn, which will include suggestions made by the members.

Full annual membership is £6, with a lower rate of £4 for pensioners and full-time students. Admission is £4 for members and £5 for guests/non-members. Whole year season tickets are available and are excellent value for regular cinemagoers. There is a bar, and tea, coffee and soft drinks are also served. So put 7.00 for 7.30pm on the last Thursday in the month firmly in your diary as the evening to join your friends at Egerton's own cinema. The committee look forward to seeing you there.



Egerton Farmers' Market

Every Friday 2 - 4:30pm
Egerton Millennium Hall

Butchery, fish, all dairy products, cheeses, deli, honey, jams, chutneys, olives, fruit & vegetables, breads, cakes, plants, animal feeds & accessories, sweets & handmade chocolates, crafts, jewellery and books

Tea & coffee with homemade cakes

Please support the local producers and at the same time get great products

Contact Sean 07849 094698



CAPTIVeweBS

INTERNET SERVICES

Domain registration & hosting
Professional website design
Interactive & effective marketing

PRINTING

For logos, letterheads, leaflets & brochures
Business cards, gift cards & invitations
Economic full colour posters, small print runs

FINE ART & PHOTOGRAPHIC

REPRODUCTION

Artwork & photographic scanning
Including negatives & 35mm slides
Fine art / photographic printing

CALL 01233 756619

sandra@captivewebs.com

WI's transport of delight!

The intrepid members of Egerton's WI left our shores in early July to head off to Amsterdam. The trip was not without its dramas as our writer reports!

In spite of last year's tribulations, the W.I. and friends decided to try again with their annual trip under the leadership of Ruth Russell and to sample Amsterdam.

We set off in good heart at 5-30am with a familiar driver, Roy, and bowled along to Ghent for a mid-day stop. Here the Dark Forces which seem to blight our transport struck for the first time. Roy arranged to pick us up later in the town centre opposite the Information Office. The temperature was over 30 so we all huddled under what shade we could find and waited - and waited.

Eventually a message came through to say that there had been a mishap which had put the coach out of action, but .



another would pick us up at 3.45, so everyone fled into the shade. One elderly W.I. member went to sit under a tree in a neighbouring park. She writes: 'Thinking I had returned to the rendez-vous in good time, I was surprised to find no-one there, but I supposed I must be an hour early, so I meandered off for a cup of tea. Still surprised that no-one else was about, I returned to the Information Office and then realised that I had really missed the bus. Alone in Ghent! I sat on the steps and tried to formulate a plan B. My brain had by now turned to cream cheese in the boiling sun; no-one had my

mobile number, and I did not want to cause panic at home by ringing there. Perhaps I could go to Amsterdam by train? Sitting there pondering my limited options, I suddenly found myself seized by two men who came from no-where and bundled me into a vehicle. My first thought was - a snatch squad of people traffickers! but no it was Roy and Dick and I was re-united with the rest, who accepted my apologies very graciously considering I had delayed their arrival at the hotel by hours.' The new coach took us to our hotel, situated on the edge of a park about 3 kilometres from the city centre. The décor was very elegant but the designers seemed to have had some sort of hang-up over the wardrobes, which they had made every effort to conceal behind the bed-head.

A.J. & N.M. CARR LTD

Private and Contract Coach Hire

DAY TRIPS / HOLIDAYS

WI, GARDENING & SCHOOL GROUPS

BRITISH LEGION & CHURCH GROUPS

THEATRE TRIPS

WEDDINGS

'Let us assist with the arrangements for your outings'

43/51/53 Seat Luxury Coaches

29/33 Seat Midi-Coaches



Pivington Works, Pluckley, Ashford, Kent. TN27 0PG
Tel: 01233 840651 e-mail: carrscoaches@btconnect.com

Andrew Hopkins Hedge Cutting



With Tractor & High Reach Cutter

Newland Green, Egerton

01233 756364

(Mobile 07845 164169)

Then they had made the hanging-rail accessible only to people over 6ft tall or those willing to climb on other furniture, but there was a large ironing-board in each. The hotel offered a sumptuous breakfast; a spread as far as the eye could see of about 40 different varieties of breads, cereals, eggs, yogurts, fruit nuts and seeds. There was a tram stop outside, very useful as our stand-in coach had to leave us after one day. A traffic accident in the city centre left us standing on hot tarmac under the broiling sun while the driver detoured round it.

There is much to say about Amsterdam and the guide books will tell it to you. Our party visited museums, churches, palaces, cafes and parks set among architecture full of charm and interest, which was revealed by the canal trip we had booked. Were there no drawbacks to this delightful city? For us, it was the heatwave. Days of temperatures over 30 made the tarmac like a storage heater so walking about was no pleasure. The second snag was the congestion of people and traffic. Known for their cycling and laid-back attitude, the Dutch show both when in their cycle lanes; flying along without helmets on their upright bicycles strung with bags, boxes and baby-seats, they take no prisoners. They are an irresistible force, like those wildebeest crossing the rivers in the Masai Mara. We had one close encounter showing the Dark Force still hovering; Roy left us at a flower market, warning us on pain of death to be there at the right time.

Unfortunately on his return his designated parking place was taken by



a dustcart, so he had to double-park in the road. The dustcart personnel tried to stop the cyclists but Dick, by no means a weedy figure, was brought down by a flying Dutchwoman. She limped off with agash in her leg and we all relaxed as we sped off. Many local bikes have no visible brakes, but there is said to be some back-pedal device to stop them.

Amsterdam is a cosmopolitan city, very relaxed and friendly; people go out of their way to help, and everyone speaks English. The Dutch believe in letting it all hang out; the red light district is clearly marked on

the map, and Gay Pride has a lot of support, so if that is your thing you could have a good time. Getting about is no problem; the trams are superb, there are hop-on-hop-off buses for seeing the sights, canal tours to see the houseboats, tall town houses and local colour by the yard. The blight on our own transport arrangements was lifted when Roy reappeared with his proper coach and whisked us home, with a lunch stop in Antwerp. In four days we had done a lot and seen a lot and had a great time. Are there any more cities like this for the exploring arm of the W.I.? We have started looking!



BEAUBRAY CATERERS MAIDSTONE

for quality catering anywhere



Call for a FREE brochure or quote on
01622 763269
 or download a copy at
www.beaubraycaterers.co.uk

Beaubray Caterers cater for all kinds of functions at 'the venue of your choice'.
 Weddings, hot and cold buffets, supply-only catering, barbecues, carveries, Kentish cream teas, christenings and funerals.

GLASS 'N' GLAZE

Est 1984
 Unit 4 Europa House
 Pivington Mill, Pluckley
 Ashford, TN27 0PG

FOR THE COMPLETE GLAZING SERVICE

We specialise in double-glazed units, single glazing, greenhouse glass, lead lights, mirrors, shelves, tabletops, safety glass, secondary aluminium glazing
 Misted and broken units replaced

01233 840768
www.glass-n-glaze.co.uk



Your Parish Council Reports

This section has been written to give you a flavour of the meetings and find out some of the projects being undertaken by Egerton Parish Council. The full minutes are available on the Parish Council Website

June Minutes

Footpaths and stiles: A couple of footpaths in the Parish remain obstructed and the Council is negotiating with the landowners to get these cleared. A boulder had been dumped on the footpath behind the Millennium Hall but has been cleared away by volunteers including Haidan Willis (age 12) who assisted in the clearing up process.

Highways: The passing area on Forstal Road near to Brook Gate caravan park is constantly flooded and eroding away. This has been reported to highways and work is under investigation. The sign on

the junction of Crocken Hill Road and Forstal Road has also been reported again as this still hasn't been fixed. The railings around the culvert on Rock Hill Road had

collapsed, but were reported and are now repaired.

TRO: The traffic restriction order for Stisted Way is still ongoing. Ashford Borough Council are being urged to respond.



EGERTON VILLAGE STORE & POST OFFICE
TEL: 01233 756112

Convenience goods; off-licence; greeting cards; dry-cleaning agent

Open M-F 8-6, Sat 8-2

Post Office counter services; car tax; banking; cash withdrawal; Euros & \$.

Open M-F 9-5:30; Wed 9-12:30; Sat 9-12:30

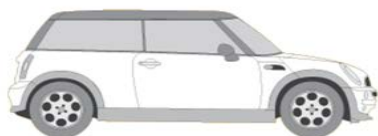
PH Oliver & SONS

Egerton, Kent TN27 9DR

Motor Engineers

Tel: 01233 756255

MoT Testing and Servicing



Kilby's

Chimney Sweeping

**Wasps Nests
and all other
Pest Control**

Tel 01233 840948

Mobile 07756 007428

Neighbourhood and Parish Plans: A public meeting is to be held in the Millennium Hall on 19th October at 7:30pm.

Tesco Funding: An application has been submitted for funding, for the repairs to be carried out to the play area and skate park. If successful the outcome will not be known until the end of August. This will be after the date the annual inspection which will be held by Wicksteed. It was decided to go ahead with all works on play area and skate park before the inspection. A local engineer has given a quote to repair the skate park ramps and this has been accepted. He will also be asked to quote for the repairs to the play area. The quote received for the new wet pour surfacing has been accepted.

Trees on Elm Close: Two local contractors have quoted for this work. As the quotes differ widely, it will be confirmed that they are quoting for exactly the same work.

Wheelie bins: The village hall wheelie bins are not being emptied because incorrect rubbish is being put in each bin. Having unsuccessfully trying to resolve it with the help of the village hall committee, it has been decided to remove the green recycling bins completely and only have the normal black waste wheelie bins. These are still **not** for hall users to get rid of their rubbish.

Sign at Stonebridge Green: The sign has been temporarily repaired and will be reported to Highways for a proper repair.

End of Financial year: All documentation has been sent to PKF Littlejohn, the Parish Council external auditors.

Primary School: The post of new head teacher is being advertised with the closing date for applications on 28/06/16 and interviews to be held on 05/07/16.

Police & Crime Commissioner: Following the election, the new Police & Crime Commissioner, Matthew Scott, will be invited to attend a Council meeting. If he agrees, Pluckley and Charing villagers will be invited to attend.

Planters on Glebe: A local Glebe resident, Debbie Humphries, has offered to take over the planting and care of the planters. EPC will fund the plants and compost. A letter of thanks will be sent to Priscilla Harper for all her hard work in previous years in caring for the planters.

Pay for Clerk: The National Salary Awards has recommended pay for Clerk's to be raised and back dated to 1st April 2016. It was voted unanimously in favour.

Heber: All the weeds will be strimmed and weed-killed up the steps and around the pathways.

Pre-school update A complete report has been compiled of all donations and grants to date. Egerton Friends were sincerely thanked for all the donations they have given which to date is over £3,700. This has been achieved by holding open gardens in the summer and coffee mornings at the pub during the winter.

Grass cutting on the Glebe: A letter of thanks will be written to John Vickers who has taken on the job of mowing the Glebe.

Plants on wall The wall opposite the school has a lot of plants/flowers growing out of the top. A Councillor was worried the roots may damage the wall. This will be investigated.

Village Hall Usage Following an issue with a party in the hall where chairs were left out overnight, the committee will place a notice on the door to the chair cupboard stating that the chairs are not to be taken out of the hall.

Road sweeper A villager has asked why the road sweeper only goes down Rock Hill Road and then turns around not going down Crocken Hill Road. This will be investigated.

Wall repairs The wall retaining the garden of 2 Hillside Villas is to be dismantled and rebuilt as it is badly cracked. This will block the entrance to the hall car park for a short time, so vehicles will need to use Elm Close.

August Parish Council Meeting Due to various reasons a number of Councillors will not be able to attend the August meeting therefore this will not take place and meetings will resume in September.



WILKINS • KENNEDY FKC
CHARTERED ACCOUNTANTS & BUSINESS ADVISERS

for your individuality

Services:

- Financial Reporting
- Management Consultancy
- Corporate & Personal Taxation

Ashford
t: 01233 629 255
e: ashford@wilkinskennedy.com

www.wilkinskennedy.com



Laser @ The Fig Tree

ALL CONSULTATIONS FREE

Laser Hair Removal, Skin Regeneration, Skin Tightening, Thread Veins, Pigmentation, Fungal Nail Infections and Age Spots

The Fig Tree Spa
Lenham Square, Lenham
Kent ME17 2PG

07887 726775 or
01622 850880

www.laseratthefigtree.com
laseratthefigtree@gmail.com

July Minutes

Footpaths and stiles: There is still an ongoing issue with a footpath in Coach Road and the landowners will be written to again to try and resolve this. With regard to the New Road footpath, KCC have fitted a kissing gate to replace the stile at the far end of the field. The landowner will fit another kissing gate to replace the stile at the New Road entrance.

Highways: The drain at Stonebridge Green Road and Coach Road appears to be broken and the water is eroding the road away. This will be reported to Highways along with the bad state of repair of Bedlam Lane from Brook Gate Caravan Park. One pothole has been repaired along Iden lane after this was reported. This still leaves several others.

TRO: There has been no contact from ABC on this matter. This will be investigated.

Neighbourhood and Parish Plans: A public meeting is to be held on 19th October in the Millennium Village Hall.

Tesco Funding and the Play Area: After a more detailed look at the funding criteria, the Council were not eligible for this. The new surface at the play area has been laid. A quote for the repair of the skate park has been received and accepted and a quote for the repair of the platforms on the play equipment has been received and accepted. The fence

replacement will now take place and prices will be sourced for new safety signs.

Trees on Elm Close: The quote has been accepted from Aaron Pack to carry out the work required.

Primary School: The post of new head teacher has been advertised and there have been two applications. It has been decided by the school to put out another advert on 4th July with short listing 4-8 September. Interviews will take place 22-23 September. The Clerk is to write to Mr Lee Selby to thank him for all his good work over the years he has been Head teacher at Egerton.

Police & Crime Commissioner: The new Police & Crime Commissioner, Matthew Scott, was invited to attend a meeting. He declined but stated there would be a meeting at some point in Ashford for any residents wishing to attend.

Heber: Following reports about the state of the cricket field in the run up to Egerton Cricket Week, Heber will be contacted regarding extra cutting or clearing particularly before known events on the recreation ground.

Glebe grass: John Vickers, who has kindly been mowing the grass on the Glebe, has sold his property and when he moves away EPC will need someone new to take on the mowing.

An advert will be placed in the next issue of the *Egerton Update*.

Chairs: When the new chairs were purchased for the Millennium hall the old plastic chairs were stored at Groom Farm. These now need to be either sold or moved. The village hall committee will be contacted to ascertain what is going to happen.

Church donation: When the Egerton-with-Pluckley magazine was in circulation a donation was given to the Church each year. The PCC have requested to be one of the good causes if, at the end of the first year, money is available from the Egerton Update.

Hedging: A resident noted the hedge outside The George along New Road is very overgrown and when people are waiting for the bus they either have to stand in the road or on the opposite side before the bus arrives.

Previously the owners of The George would keep the hedge trimmed. The new landlords will be contacted and asked if they could continue to keep the hedge trimmed back.



Thorneloe & Co.
Solicitors
Michael and Harriet Thorneloe

An independent family practice providing a friendly, high quality, personal service tailored to your specific needs.
Specialists in a range of legal services:

• Wills	• Residential Conveyancing
• Estate Administration	• Commercial Conveyancing
• Trusts & Taxation	• Re-mortgaging
• Lasting Powers of Attorney	• Equity Release
• Court of Protection	• Buy-to-Let

01622 859 416

e: thorneloe@thorneloe.co.uk w: www.thorneloe.co.uk
St Mary's House, The Square, Lenham, Kent ME17 2PH

Authorised and regulated by the Solicitors Regulation Authority Registered Number 70429

CHIROPODY & PODIATRY



+Community group visits
+Free Parking +Disabled access

Podplus Shop & Clinic
Julie Rose Stadium, Ashford TN24 9QX
01233 660 851 www.podplus.co.uk
info@podplus.co.uk



R.J. MOSS
Limited

www.rjmossltd.co.uk

Painting & Decorating

Richard	07974 815124
Luke	07912 604533
Office	01795 480647

Email: rjmossltd@sky.com

DIRECTORY OF ADVERTISERS

Accountancy		Decorators & Painters		Glaziers	
AIMS (Alison & Gary Robinson)	4	B J Luckhurst	20	Glass 'n' Glaze	39
Wilkins Kennedy	41	Home Decorating Services	32	Health & Fitness	
Beauty		R J Moss Ltd	42	Angelina Lumley	8
Laser @ The Fig Tree	41	S I Parr	5	Bowen Therapist	7
Builders & Building Supplies		Dentists		Life Balance Yoga	18
A T Palmer	30	Golding House Dental Surgery	16	Yvonne Fernanado	14
B J Luckhurst	20	Drainage		Heating & Fuel	
Egerton Builders	34	R J Hopkins	9	Fordhams Coal	7
Fixings Warehouse	11	Education		P & V Quenby Ltd	33
R J Moss Ltd	42	Egerton C of E School	9	WFL (UK) Ltd	18
Rich Gordon	5	Egerton Pre School	14	House Clearance	
Carpets & Rugs		Mrs Jane Cooper	5	J Skilton 4 Rubbish	16
Carpets Direct	10	Engineering		Insurance	
Joshua Lumley	13	JD Mills Engineering	23	Cascade Insurance	15
Car Repair		Estate Agents		Wealden Insurance	17
Collins Garage Ltd	14	Hobbs Parker	35	I.T.	
P H Oliver & Sons	40	Saddlers	2	Captivewebs	37
Phipps Motors	16	Fencing		Chrysalis Computer Solutions	19
Catering		CWP Fencing	20	Egerton Telecottage	4
Catering by Beaubray	39	R James & Sons Fencing	9	Kitchens	
Chimney Sweep		TW Paving	33	The Kent Kitchen Company	43
Kilbys	40	Financial Planning		Osteopaths	
Chiropody & Foot Care		Scarlett Financial Services	31	Angelina Lumley	8
Mrs Afsaneh Smith	7	Wilkinson Wealth Management	47	Parties, For Hire	
Podplus	42	Framing		Catering by Beaubray	39
Chiropractor		Rose Farm Studio - Framing	13	Chart Hills Golf Club	48
Dr Philip Petts	32	Furniture Restoration		Egerton Sports Pavilion	17
Coach & Car Hire		Susan Surgey	26	Pest Control	
AJ & NM Carr Ltd	38	Gardening & Garden Supplies		Kilbys	40
Wealden Wheels	6	Andrew Hopkins (Hedge Cutting)	38	Pets	
Coal Merchants		Mower Plant Services	26	All Creatures Great and Small	9
Fordhams Coal	7	Ray Jiles (Tree Surgeon)	29	Photographers	
Computing (See I.T.)		R James & Son Fencing	9	RG Studios	17
Country Pursuits		TW Paving	33	Rose Farm Studio - Photography	12
Slick Sticks	36			Plant Hire	



Design – Choice - Service

Quality Kitchens, bedrooms and home offices.

We pride ourselves on good old fashioned customer service with all work personally project managed, we are your local kitchen specialist.

Unit 3, Burnt House Farm Business Park

Bedlam Lane, Smarden,

Ashford, Kent. TN27 8PG

Showroom - 01233 756401

www.thekentkitchencompany.co.uk



Andrew Hopkins	38
R J Hopkins	9
Plumbing	
B J Luckhurst	20
Rich Gordon	5
WGJ Plumbing	36
Printers	
Captivewebs	37
Rubbish Removal	
J Skilton 4 Rubbish	16
Shops	
Egerton Farmers Market	37
Egerton Village Stores	40
Pluckley Farm Shop	27
Weald Smokery	19
Solicitors	
Kingsfords	12
Thorneloe & Co	42
Window Cleaner	
Luke Epps	26

VILLAGE DIARY

Regular Weekly

Mon	Tue	Wed	Thu	Fri	Sat	Sun
	1pm Mother & Toddler (VH) 6pm Yoga (VH) 7pm Short Mat Bowls (GB) 7.45pm Yoga (VH)	9am ERC (SP) 11am Egerton Friends (Garden schedule) From 2.30pm Library (See schedule) 6pm ERC (cycling - see website)	1.30pm Yoga (VH) 7pm ERC Circuits (GB)	8.45am ERC (SP) 9.30am Pilates (GB) 1.30 Short Mat Bowls (GB) 2pm Farmers Market (VH)	10am - 12pm Telecottage	9am ERC (see website)

August 2016

Mon	Tue	Wed	Thu	Fri	Sat	Sun
1	2 10am Borough Councillor (VH) 7.30pm She Stoops to Conquer Egerton House)	3 7.0pm Women's Institute (VH) 7.30pm Alls Well That Ends Well (Egerton House)	4	5	6	7
8 12.30pm Over 60s (VH)	9	10 7.30pm WI Table Tennis (VH)	11	12	13 2pm Egerton Cricket Club (SP)	14
15	16	17	18	19	20	21
22	23	24 7.30pm WI Table Tennis (VH)	25	26	27 2pm Egerton Cricket Club (SP)	28 1.30pm Egerton Cricket Club (SP)
29 <i>Bank Holiday</i>	30 8pm Egerton Folk Club (Queens Arms Pub)	31				

Key to diary: Venues

VH = Village Hall
GB = Games Barn
SP = Sports Pavilion
PVH = Pluckley Village Hall
SJC = St James' Church
EPS = Egerton Primary School

Key to diary: Clubs & Societies

EPC = Egerton Parish Council
ERC = Egerton Running Club
EMC = Egerton Music Club
ECC = Egerton Cricket Club
EMF = Egerton Music Festival

September 2016

Mon	Tue	Wed	Thu	Fri	Sat	Sun
			1	2	3 1.30pm Egerton Cricket Club (SP)	4 1.30pm Egerton Cricket Club (SP)
5	6 10am Borough Councillor (VH) 8pm EPC (VH)	7 7.0pm Women's Institute (VH)	8	9	10	11
12 2pm Over 60s (VH)	13	14 7.30pm WI Table Tennis (VH)	15	16	17 1.30pm Egerton Cricket Club (SP)	18 1.30pm Egerton Cricket Club (SP)
19	20	21	22	23	24 1.0pm Egerton Cricket Club (SP)	25 Tough Mudder (See whats on)
26	27 8pm Egerton Folk Club (Queens Arms Pub)	28 7.30pm WI Table Tennis (VH)	29 7.30 Egerton Film Society (VH)	30		

October 2016

Mon	Tue	Wed	Thu	Fri	Sat	Sun
31					1	2
3	4 10am Borough Councillor (VH) 8pm EPC (VH)	5 7.0pm Women's Institute (VH)	6	7	8	9
10 2pm Over 60s (VH)	11	12 7.30pm WI Table Tennis (VH)	13 MAGAZINE COPY DATE	14	15 7.30pm Headcorn Scouts Quiz (VH)	16
17	18 10am Happy Bag Collection (EPS & VH)	19 Neighbourhood Plan Public Meeting (VH)	20	21	22	23
24	25 8pm Egerton Folk Club (Queens Arms Pub)	26 7.30pm WI Table Tennis (VH)	27	28	29	30

Useful Village Contacts List

Council

Member of Parliament	Damian Green	01233 820911
County Councillor	Charlie Simkins	01233 756705
Borough Councillor	Geraldine Dyer	01233 770213
Parish Councillors:	Richard King (Chairman), Peter Rawlinson (Vice Chairman), Jennifer Buchanan, Claire Foinette, Ambrose Oliver, Tim Oliver, Pat Parr, Alison Richey, Rob Walker	
Parish Clerk	Heather James	01233 756501
Tree Warden	Peter Rawlinson	01233 756393

Church

G7 Benefice Rector	Revd Sheila Cox	01233 712598
Youth & Families Minister:	Mim Oliver	07725 112141
Egerton Free Church	Revd Ambrose Oliver	01233 756459
Egerton Churchwardens:	John Lumley	01233 756249
	Linde Ovington-Lee	01233 756572
PCC Secretary St James'	Jan Burgess	01233 756147
Flowers, St James'	Priscilla Harper	01233 756437
Bell ringers, St James'	Mike Yarrow	01233 756387
Friends of St James Church	Dick Crabb	01233 756517
Kent God's Acre Project	Sarah Widd	01233 756460

Schools & Playgroups

Egerton Primary School	Lee Selby (Headteacher)	01233 756274
Egerton Pre-School	Emily Leggat (Manager)	07773 600982
Egerton Mother & Toddler Group	Kimmy Burbridge	01622 891201

Clubs & Organisations

Air Training Corps (Ashford Squadron)		01233 637035
Bethersden Cub Scouts	Mary Ford	01233 820989
Egerton Film Society	Richard King	01233 756592
Egerton Friends	Elaine Graham	01233 756137
Egerton Housing Association	Sue Palmer	01233 756686
Egerton Music Club	John Fraser	01233 756254
Egerton Telecottage	Carol Hulm	07990 574214
Egerton Players	Vanessa Perrin	01622 851854
Egerton Over Sixties Club	Jenny/Theo Oliver	01233 756452
Egerton Village Hall Bookings	Jim Cooke	01233 840479
Egerton Women's Institute	Gale King	01233 756592
Headcorn Scout Group	Ann Carroll	01622 890061
Weald of Kent Protection Society	Gale King	01233 756592

Sport

Egerton Games Barn Bookings	Joan Smyth	01233 840362
Egerton Sports Pavilion Bookings	Bill Smyth	01233 840362
Egerton Cricket Club	Paul Hope	07885 509751
Egerton Football Club	Geoff Wickens	01233 756453
Egerton & Pluckley Junior Football Club	John Harrison	01233 840822
Egerton Running Club	Sarah Elworthy	01233 756205
Egerton Short Mat Bowls	Mike Yarrow	01233 756387
Egerton Walking Group	Claire Foinette	01233 756714

Emergencies, Care & Services

Ashford Borough Council (emergency out-of-hours 629911)		01233 637311
Ashford Citizen's Advice Bureau	www.ashfordadvice.org	01233 626185
Doctors' Surgeries	Charing	www.charingpractice.co.uk
	Headcorn	www.headcornsurgery.nhs.uk
	Lenham	www.lenvalleypractice.co.uk
Dog Warden	Colin Leek	01233 330340
Electricity	EDF	0800 783 8866
Fly tipping	Kent Waste Watch	0845 345 0210
Gas Leaks	British Gas	0800 111 999
Highway Services	www.kent.gov.uk/roads-and-travel	
Hospital	William Harvey	01233 633331
Neighbourhood Watch	Lois Tilden	01233 756221
NHS Direct	www.nhsdirect.nhs.uk	111
Police Community Support Officer	Paul Moorey	0777 2226142
Police Non-Emergency		101
South East Water (supply) (emergency 0845 603 2603)	leak line	0800 614 366
Southern Water (sewerage)	blockages, pumping station failure	0845 278 0845

ML WILKINSON WEALTH MANAGEMENT LTD

We provide a local face to face comprehensive financial
planning service with 25 years' experience
for individuals, families and businesses




Protection of your Income and Family
Retirement Planning
Investments
Estate Planning and Inheritance Tax
Care Planning for the elderly/incapacitated

For enquiries or a meeting please contact us on:

Office 01233 840783 or 01634 221288
Mobile 07999 042 726
E Mail martin.wilkinson@sjpp.co.uk
nicola.ridgewell@sjpp.co.uk
Website www.wilkinsonwealth.co.uk

Martin Wilkinson APFS, Certs CII (MP & ER) – Director and Chartered Financial Planner
Nicky Ridgewell – Client Relationship Manager

The Partner Practice represents only St. James's Place Wealth Management plc (which is authorised and regulated by the Financial Conduct Authority) for the purpose of advising solely on the group's wealth management products and services, more details of which are set out on the group's website www.sjp.co.uk/products. The title 'Partner Practice' is the marketing term used to describe St. James's Place representatives


It's time to start thinking about this year's...

Christmas Parties

NOV-DEC
FROM 12PM

Festive Lunch
FAMILY, FRIENDS & STAFF LUNCHES
AVAILABLE MIDWEEK & WEEKENDS
£26.00
THREE COURSES - INCLUDES CHRISTMAS
CRACKERS & PARTY POPPERS
(Not available Christmas Day and Boxing Day)

DEC
2-3-9
AT 6PM


Swing & Casino
FESTIVE PARTY NIGHTS
£38.50
THREE COURSE MEAL

DEC
16-17
AT 6PM

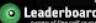
Dick Whittington's
COMEDY DINING EXPERIENCE
& DISCO
£40.00
THREE COURSE MEAL

DEC
31
AT 7PM

New Year's Eve
BLACK AND GOLD CASINO NIGHT
£65.00
DRINKS RECEPTION
FOUR COURSE MEAL



TO MAKE A RESERVATION OR FOR FURTHER INFO PLEASE CONTACT
THE EVENTS TEAM ON 01580 292222 OR EVENTS@CHARTHILLS.CO.UK
CHART HILLS GOLF CLUB, WEEKS LANE, BIDDENDEN, KENT, TN27 8JX

 **Leaderboard**
...owners of fine golf courses

#CHWEDDINGEXPERIENCE


CHART HILLS
WEDDING EXPERIENCE

Save the Date

SUNDAY 30TH OCTOBER
11AM - 3:30PM

REGISTER
TO
WIN!

£300 OFF
YOUR WEDDING
VENUE!

FREE ADMISSION
GET YOUR VIP GOODIE BAGS
WWW.CHARTHILLS.CO.UK/WEDDINGS

FOLLOW US




THE KENT WEDDING CENTRE
Chart Hills Golf Club
Weeks Lane, Biddenden, Kent TN27 8JX
Tel: 01580 292222 E: info@chartershills.co.uk W: chartershills.co.uk


DINING INVITATION

Join us for the dinner event of the year, which combines fine food and comedy action, served up Only Fools and Horses style.

Marlene and Boycie are hosting a Gala Dinner, but will things go to plan with Del, Rodney and Uncle Albert on the guest list?

Expect a **BIG FUN NIGHT OUT** in a friendly party atmosphere with some of the finest comedy actors in the land, professionally produced to the highest standards with your enjoyment at the top of the menu.

ONLY
£35.00
PER PERSON



SATURDAY 15TH OCTOBER - 7PM - COMEDY EVENT - INCLUDES 3 COURSE MEAL

TO MAKE A RESERVATION OR FOR FURTHER INFO PLEASE CONTACT
THE EVENTS TEAM ON 01580 292222 OR EVENTS@CHARTHILLS.CO.UK

 **Leaderboard**
...owners of fine golf courses

CHART HILLS GOLF CLUB, WEEKS LANE, BIDDENDEN, KENT, TN27 8JX