

# EGERTON UPDATE

The quarterly magazine for the village of Egerton, Kent

Issue 13 February 2019



## May Elections: your chance to serve your community

**Egerton Parish Council chairman, Richard King writes:**

“This is the year in which a new Parish Council for Egerton will be chosen by our community, and we would like to see some new faces putting themselves forward for election. If you have an interest in the future of our village and would like the opportunity to be of service to your fellow citizens then why not consider becoming a member of the Egerton Parish Council.

The new council will serve for four years, and on polling day, Thursday 2<sup>nd</sup> May, all those registered to do so will have the opportunity to vote for those in the Parish who have put their names forward. Some will be existing councillors who wish to continue serving their community, but anyone who lives or works in the Parish (or within three miles of the Parish boundary) is eligible to stand for election, subject to meeting some basic conditions. The notice of the election will be published not later than 26<sup>th</sup> March, with 3<sup>rd</sup> April being the closing date for nominations to be submitted. Later in April a ‘Notice of Poll’ will be published by the Borough Council, which will give the names of all the candidates. Nomination papers will be available from the Borough Council at the Civic Centre in Ashford. All candidates require a proposer and seconder, and have to declare that they are not disqualified from being elected. Following publication of the notice of the election a nomination paper pack, which includes guidance notes for candidates, will be available from the Returning Officer at the Ashford Civic Centre.

If you are interested in standing for election, please talk to the Parish Clerk, Heather James, or to any of the present Parish Councillors, who would be happy to explain what the council does and what sort of a commitment you would have to make should you be elected. You might also like to come along to see what goes on at the Parish Council meetings, which take place in the committee room at the Millennium Hall (entrance through the side door) at 8.00pm on the first Tuesday of the month.

**INSIDE THIS ISSUE:** \*Back of village hall gets makeover  
\* Festive reviews \* cold weather grit \* Egerton remembers \*  
Neighbourhood Plan\* Music for Spring

## New owners for shop

EPC Chairman, Richard King writes:

As reported in our last issue, exciting new developments concerning our Village Stores are in hand, and it can now be confirmed that contracts are being drafted for the sale of the shop and it is anticipated that they will be exchanged soon, although we are not at liberty to confirm who the purchaser is until this has happened.

Once the shop has changed hands it will be closed for a complete refurbishment, the stock will be replenished and enlarged and the internal layout modernised and extended. It is hoped that our ‘new’ Village Stores and Post Office will then reopen sometime during late spring or early summer.

For the past twelve months the village stores working group, an initiative of the Parish Council spearheaded by the late Alison Richey, have been working away behind the scenes to ensure that Egerton continues to have a village shop and post office. Following two packed public meetings last spring a Community Benefit Society was created with the object of purchasing the shop and running it as a community venture should a suitable private purchaser not be forthcoming. Various grants were obtained, with some of this funding being provided through the good offices of Charlie Simkins and Geraldine Dyer, our

*Continued on page 3*





# Saddlers

[www.saddlersresidential.co.uk](http://www.saddlersresidential.co.uk)

*Your local specialist in the sale and management of village and country residential property in Kent.*

-  Extensive Online Marketing on Major Portals Along With Paper Advertising
-  Local Kent Office Along with Central London Office
-  In-House Designed Bespoke Property Brochures
-  Accompanied Viewings
-  In-House Professional Photography
-  Over 60 Years Combined Local Experience Selling in Your Area
-  In-House HD Video Walkthrough Tours
-  98% of Asking Prices Achieved in 2015
-  In-House High Level Photography
-  Award Winning Service



Pop in and see us at:  
Reed House, 1-3 Old Ashford Road,  
Charing, Kent, TN27 0JG



**Tel: 01233 713127**

 /saddlersestateagents

 @Saddlersprop

 /SaddlersResidential



**Zoopla**

Smarter property search



**The Telegraph**



**Mail Online**





## New owners for shop cont...

County and Borough councillors. Funding pledges were being received when, in August, an offer for the shop was made by a strong candidate with considerable experience in running village based convenience stores in Kent. Work to raise funds from our local community was then put on hold. Now that the future of the shop seems secured the company formed by the working group will remain dormant and the working group disbanded once the shop reopens under new management.

The Parish Council would like to thank everyone concerned for all their hard work and initiative in achieving what would appear to be a highly successful outcome, and in particular those professionals in the village who gave their time and expertise to this project without charge. When it reopens it is hoped that everyone in Egerton will support the new venture, for the shop and post office is of vital importance to the continued health of our rural community. There will be further news in our next issue.

## Diary Date for All Egerton Parish Assembly

**Thursday March 21st  
7.30pm  
Village Hall. All welcome**

## Phone Signal: Damian Green steps in

For several months, Egerton Parish Council has been working in partnership with the Rt Hon Damian Green, MP for Ashford, to try to bring an end to the issue of poor mobile phone reception in some parts of the Parish.

The Parish Council enlisted the help of Mr Green to put pressure on the operators of mobile phone masts in the region, to try to eliminate the signal 'shadow' that seems to afflict those areas that are in the lower lying areas of the village. This shadow could be because most of the masts that serve Egerton are situated along the M20 corridor and out of the 'line of sight' of many lower lying locations.

Mr Green received encouraging responses from two operators, BT and Telefonica, and as a result, further dialogue between the Parish Council and those operators will now take place to try to resolve the issue.



## Sad farewell to three long-standing residents

A special obituary can be found on page 25 of this magazine commemorating the life of Derek Marks, a former long-serving Chairman of Egerton Parish Council who passed away just before Christmas.

It is with great regret to announce that we have also lost two longstanding residents of Egerton village in December and January respectively. Jim Homewood, died on the 18<sup>th</sup> December. His funeral was held on Tuesday 22<sup>nd</sup> January. Also Peter Widd, who died on the 15<sup>th</sup> January. His funeral will be held on Friday 22<sup>nd</sup> February.

A full obituary of both Jim and Peter will be given in the next edition of *Egerton Update*. We send our sincere condolences to Sylvia and Sarah and their families.

*Egerton Update* is published by Egerton Parish Council and is produced by volunteers. Whilst every effort is made to ensure accuracy in the production of the magazine, any opinions expressed in articles are those of the individual contributors not the Parish Council.

**RICH GORDON  
GAS BOILER  
SERVICING**

**LANDLORDS'  
CERTIFICATES**

**Mobile 07780 678855**

**Home 01233 840041**

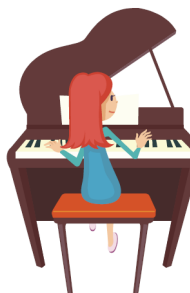
**Pluckley - based**



**MRS JANE COOPER**  
G GSM, ARCM, AGSM  
**01233 714787**

Piano lessons  
in Charing  
Heath

Beginners to  
Grade 8



**S I PARR**

**PAINTING & DECORATING**

**Qualified Decorator**

**30 years experience**

**Interior / Exterior**

**Estimates Free - No VAT**

**01233 756676**

## Ready for snow business

With the cold winter weather having finally arrived and likely to be with us for several more weeks yet, residents should be aware that there are several salt and grit boxes placed around Egerton to help motorists and pedestrians in the event of snowfalls.

There is a bin situated in each of the following village roads – Stonebridge Green Road, Egerton House Road, Field Mill Road, Bedlam Lane, Coach Road, one in Stonebridge Green and two in Rock Hill Road.

Each bin also contains a shovel for spreading the salt and grit in the vicinity and the contents are replenished throughout the winter by the Parish Council for use on our public roads only.



## Quiz teams battle it out!

Twenty teams took part in last October's popular Headcorn Scouts Quiz, held in the Millennium Hall. The quiz included a fiendish round on

identifying the faces of famous people on stamps from across the globe! The 2019 Quizzes will take place on March 30th and October 20th.

Another 20 teams also took to the floor for January's Cricket Club Quiz. Over £700 was raised for the club on the night and the winning team was "Welease Woderick".



# AIMS

Accountants  
for Business

No hourly charges, all fees agreed in advance and your initial meeting is FREE with no obligation on your part.



Tax Advice & Tax Planning



Accounting & Bookkeeping



Business Advice & Support



Regulation & Compliance

**Your initial consultation is free  
and without obligation**

Alison Robinson ACMA & Gary Robinson ACMA

T: 01233 756148

M: 07891 654141

E: [alison.robinson@aims.co.uk](mailto:alison.robinson@aims.co.uk)

W: [www.alisonrobinson.aims.co.uk](http://www.alisonrobinson.aims.co.uk)

## EGERTON COMPUTER CENTRE

at the Millennium Hall



Need help with your iPad or tablet?

Struggling with Windows 10?

Lost your email?

Can't find your photographs?

Why not come along to our popular  
Saturday morning clinic for help

- we are open between

**10am and 12 noon**

We would love to see you!

**Phone: 07990 574214**

email: [instructor@egerton-kent.co.uk](mailto:instructor@egerton-kent.co.uk)

and find us at [www.egerton-kent.co.uk](http://www.egerton-kent.co.uk)





### We're here to help

- **Computer repairs:** everything from replacing failed parts and installing upgrades, cleaning them safely.
- **Internet:** Resolving issues with your internet connection: whether it be diagnosing telephone line problems or replacing failed routers.
- **Software issues:** We offer assistance with MS Office components that refuse to run: Windows or MacOS behaving in strange ways.
- **Networking:** Wireless and wired networks installed and configured. Wireless network security enabled
- **Virus & adware removal**
- **Tablets**
- **Smart phones**
- **Data recovery**

tel: 07957 580604 or  
01233 888058  
email: [alister@chrysalis-cs.com](mailto:alister@chrysalis-cs.com)

Home heating oil?  
You're in safe hands



At Nigel Collison Fuels, we've been providing a seamless and reliable heating oil service for homes across Kent since 1972.

01580 755878 | [www.nigelcollisonfuels.co.uk](http://www.nigelcollisonfuels.co.uk)



## WI's festive cheer



WI members enjoyed a lovely spread at their Christmas party



Pat Cowell, Shirley Missing, Ruth Shrubbs and Liz Wyndham manned the stall at the village Christmas Fayre on the Glebe.

## Walkers welcome in New Year

Over 50 hardy walkers and assorted dogs set off from the centre of the village to enjoy a long New Year's Day Walk and to enjoy a warm welcome at local hostelrys along the way! This traditional Egerton event has been resurrected in recent years and attracts more and more participants each year.

## Varied Spring programme with the Arts Society



The Arts Society, Egerton has a varied Spring series of lectures for the next few months. On February 13th the topic is *Antony Gormley—A Body of Work*; March 13th features a talk on Gilbert and Sullivan and their Savoy Operas. On April 10th the topic is Kosovo and its history with silver entitled *The Silver Thread* and the May 8th event explores *Cultural Experiments in the Weimar Republic*—a look at the culture of German speaking Europe during the inter-war years. Lectures start at 2.30pm and are held in the village hall. Members and guests are welcome.

### Qualified Foot Health Practitioner Mrs Afsaneh Smith

MCFHP, MAFHP  
Hubbards Farm, Lenham Heath

**07506 376264**

**01622 853640**

- Routine Chiropody
- Fungal Treatment
- Verruca Treatment
- Diabetic Foot Care
- Corns and Calluses
- In-growing Toenails



**Fordhams**  
**COAL**

**Turner Farm**  
**Chambers Green Rd**  
**Pluckley**  
**Kent TN27 0RH**

Solid Fuels – Gas – Charcoal – Logs

**T: 01233 840222**  
**W: [fordhamscoal.co.uk](http://fordhamscoal.co.uk)**  
**E: [info@fordhams.co.uk](mailto:info@fordhams.co.uk)**

Approved Coal Merchant

## Garden gigs for 2019

Elaine Narbrough reports on Pluckley with Egerton Gardening Society



Already there are signs of spring in our gardens. Daffodils are well up and new shoots are appearing on annuals. Nature never sleeps! Neither do the members of the PEGS Committee and our 2019 calendar of events is up and running.

Our talk on the cottage garden from renowned gardener, speaker and national newspaper columnist Helen Yemm, was a great success. Members and non-members alike enjoyed her wonderful slide show of exquisite flowers. We are confident that our next talk on 20<sup>th</sup> February in the Millennium Hall will be equally well received. Pippa Greenwood – a well known celebrity gardener, who has countless TV and radio appearances to her name – will be sharing her knowledge of growing great vegetables. Doors open at 7pm for a prompt 7.30 start. Call Sue on 840320 or Mary on 756588 for tickets, which are also on sale in the Pluckley Farm Shop and Pluckley Butchers and cost just £7.50 each.

Also coming soon: On 23<sup>rd</sup> March we will be visiting The Walled Nursery in Hawkhurst for a lecture and tour of their thirteen Victorian glasshouses. Our spring show takes place on 13<sup>th</sup> April in Pluckley Village Hall. We have a trip to The Orangery, Mystole – a mature walled garden with lovely views over Chartham Downs and the added attraction of tea and cake! Not to be missed in July – the world famous RHS Hampton Court Flower Show. We have negotiated a reduced price entrance fee and transport is free for PEGS members. Spaces are going fast!

Details of these and all our 2019 events can be found on our exciting new website, of which we are very proud! Do check it out on <https://pegsoc.org>. You will also find handy gardening hints, news of local recommended gardens and events, plus full details on how to join us! A warm welcome is guaranteed and at just £7.50 per household for annual membership, it's surely got to be the best value society in Egerton!

## Quiz and Cards

Jennie White writes:

"I have arranged a Quiz on Friday 26<sup>th</sup> April in the Millennium Hall 7pm for 7.30pm to raise funds for Alzheimer's Research. Teams of 6 @ £30 per table. Bring your own nibbles and drink and glass.

To book a table contact Jennie White 01233 756747. Having had my 70<sup>th</sup> birthday this week I have set myself a challenge to raise the year of my birth in £ for Alzheimer's Research and this is my first event. I will also be organising an afternoon with tea and cake at Tram Hatch on 20<sup>th</sup> June, and a Bridge Drive on 23<sup>rd</sup> October."

## Comedy Night at R&C

Comedy is on the menu at the Rose and Crown on Friday 26<sup>th</sup> April with special guest Luke Wright, "Poet Laureate", who will be coming to the Rose & Crown in the middle of his nationwide tour. See his other gigs at [www.lukewright.co.uk/gigs](http://www.lukewright.co.uk/gigs). Tickets will be on sale soon so save the date!

## THE ROSE & CROWN

*Your quintessential country pub*

HOT FOOD - LOCAL ALES - BEER GARDEN

01233 840048

[www.theroseandcrownpluckley.co.uk](http://www.theroseandcrownpluckley.co.uk)



## MOTHER'S DAY LUNCH SUNDAY 31ST MARCH

2 courses £19.95

3 courses £24.95

## CHILDREN'S MENU MOTHER'S DAY

2 courses £9.95

3 courses £12.95

Mother's Day will be 3 sittings: 12-1pm 4-5pm and 7-8pm

See website for menu details: [www.theroseandcrownpluckley.co.uk](http://www.theroseandcrownpluckley.co.uk). Phone: 01233 840048





# Egerton remembers

**Hundreds of residents gathered onto the Playing Fields on the evening of November 11, 2017, to light Egerton's beacon to mark 100 years since the guns fell silent at the end of the First World War. Our beacon was just one of over 1,300 "Beacons of Light" lit across the country as part of "Battle's Over" - a nationwide tribute to the millions who were lost, or who participated in the war, on the battlefield and the home front.**

Egerton Parish Council chairman, Richard King, asked everyone to reflect on the events of that terrible war and to remember the sacrifices made by our Nation's servicemen and civilians. "We should look to the future and dedicate ourselves to ensuring that the comradeship and community spirit which sustained us in two world wars continues, today, and to work in anyway we can to end all wars." Ambrose Oliver, of Egerton Free Church, then led the reading and prayers. He read the WWI official Church Prayer of Thanksgiving for the end of the conflict.:



*Egerton schoolchildren paid their tribute to The Fallen*

*"Let us praise God for the great and glorious victory which he has been pleased to grant to us and to our allies, and for the good hope of peace now shining through the clouds of war.*

*Let us praise him for the faithfulness, bravery, and self-sacrifice of all who have fought and laboured for our deliverance, and, above all, for the memory and high example of all who have died or suffered that we may live."*

He added: "Also, Father, we continue to thank you for the peace achieved 100 years ago. We thank you for those who nobly paid the price for peace then and for peace today, for their courage, sacrifice and love. Amen."

This was followed by trumpet player, Janet Wyldham, playing *The Last Post* after which everyone held a 2 minutes silence. After 'Reveille' was sounded, the beacon was lit, shortly followed by the ringing of St James' Church bells—joining the bells of 1,400 other churches and cathedrals across the country.

WEALDEN · WHEELS

Community Transport

Driven by Volunteers

Minibus and Wheelchair Accessible Vehicles.  
Available with a friendly volunteer driver or self-drive hire.

Membership is open to everyone.  
Volunteer drivers are always welcome.

Wealden Wheels is a not-for-profit Company supported by funding from Kent County Council, Ashford Borough Council and the Parish Councils of Charing, Chilham, Egerton, Pluckley and Smarden.

The Old Granary, Pevington Farm, Pluckley, Kent TN27 0PF  
wealdenwheels@btconnect.com  
01233 840000 · www.wealdenwheels.co.uk





## Farm equipment is target

Sadly there has been a spate of thefts in the area over the past few months – mostly of farm machinery, trailers and other equipment. Even one huge bronze hippo was stolen from a garden centre. It seems thieves will stop at nothing – breaking locks, smashing through hedges and gateways. There was one house burglary in Egerton too. It all points to being even more security-minded and everyone being vigilant. If you spot anything suspicious, do call the Police on 101, giving as much detail as you can. If it is clear there is a crime in progress, call 999.

### Fake TV Licensing Emails Received By Thousands

Be aware - there have been more than 5,000 reports about fake TV Licensing emails in the last 3 months. In December 2018 alone, 200 reports were made, with victims reporting a total loss of £233,455. The banks say they cannot reimburse customers who have mistakenly authorised payments to fraudsters.

#### How It Works

- An email is received about TV licence payments/refunds.
- The payment/refund link is to a "genuine-looking" website.
- Personal and bank details are requested on a fake form.
- Within two weeks, the criminals call, claiming to be from the fraud department of the victim's bank.
- They tell the victim that fraudulent activity has taken place on their account and to transfer their money to a new "safe account".

#### Protect Yourself

- Never answer unsolicited emails.
- Don't assume a phone call or email is authentic.
- Always question unsolicited requests for your personal or financial information
- The Police, Tax Office, Trading Standards and TV Licensing will never email you, unprompted, to ask for bank/personal details or tell you about a refund.
- Your bank will never ask for your PIN, password, or to transfer money out of your account.

#### What To Do If You've Fallen Victim

- Let your bank know as soon as possible and monitor your accounts regularly for unusual activity.
- If you have lost money to the scammers, contact Kent Police by calling 101
- For advice and to report issues to **KCC Trading Standards** contact Citizens Advice consumer service on 03454 04 05. You can also contact the independent charity Crimestoppers in Kent – anonymously - on 0800 555 111.

## ST JAMES' CHURCH FLOWER GUILD

Feb 2019— April 2019



<b>FEBRUARY</b>	<b>3</b>		Mrs P Harper
	<b>10</b>		Mrs P Harper
	<b>17</b>		Mrs C Willis
	<b>24</b>		Mrs C Willis
<b>MARCH</b>	<b>3</b>		Mrs K Crabb
		<b>LENT</b>	
<b>APRIL</b>	<b>21</b>	<b>EASTER</b>	Mrs K Crabb
	<b>28</b>		Mrs V Smith



## egertonupdate@gmail.com

The next issue of Egerton Update will be distributed in May 2019. Between now and then we welcome your photographs, and reports, of all the news that is happening in your club or society. We would also love to receive details of what you have been up to over the Spring months and what is coming up in Egerton during the Summer.

All you do is email your contribution to **egertonupdate@gmail.com**.

The final copy date for editorial contributions will be April 13th 2019.

Please, where you can, send us a photo to illustrate events and meetings reports.

## Egerton Church of England Primary School

Stisted Way, Egerton, Kent  
TN27 9DR



In our church school we provide a happy, safe environment for learning and working, where we encourage each other to do our best to achieve our goals!

We are a single form entry school with large modern classrooms all set in a beautiful rural location. We offer excellent facilities including a Breakfast Club which opens at 7.45am and an after school Play Club open until 6pm.

We welcome visits to the school, please contact us on 01233 756274 or email [office@egerton.kent.sch.uk](mailto:office@egerton.kent.sch.uk) to arrange a visit and to find out more.

[www.egerton.kent.sch.uk](http://www.egerton.kent.sch.uk)

Compassion Humility Inspiration Love Determination

## Spaces available

Tel: 07391 181 248  
[egertonpreschool@outlook.com](mailto:egertonpreschool@outlook.com)

Millenium Hall, Elm Close  
Egerton, Kent, TN27 9DS  
Registered Charity No. 1042015  
Ofsted Registered No. 127171

[www.egertonpreschool.co.uk](http://www.egertonpreschool.co.uk)



## R JAMES & SONS FENCING

The Answer to All Your  
Fencing Needs

Agricultural, commercial, domestic,  
security, fencing and gates

Tel: 07850 225888  
01233 756192

[scott@rjamesfencing.co.uk](mailto:scott@rjamesfencing.co.uk)  
[www.rjamesfencing.co.uk](http://www.rjamesfencing.co.uk)

## R J HOPKINS

Plant Hire



SITE WORK, DITCHING &  
POND CLEARANCE

Newland Green, Egerton 756364  
(Mobile 07860 924362)

## Players bring Christmas Spirit to Egerton and offer One-Act Plays for Spring



### Egerton Players were in the Spirit of Christmas as Anne Rayner reports:

Those of you who attended the Egerton Player's Spirit of Christmas show will, I am sure agree, that it was a great success and a wonderful start to the festive season. Anne Lawson from NODA attended the Friday night show and wrote:-

*"Under the meticulous direction of Ciara Crossley-Roberts, this was an evening of festive music, some old, some new, with readings celebrating the 'Spirit of Christmas'. Something a little different for this time of year."* *"This production certainly encouraged the appreciative audience into the 'Spirit of Christmas' so very well done to all concerned in making this such an enjoyable evening's entertainment".*

We couldn't put it better ourselves! A massive thank you to all of you who helped bring this wonderful show to life and to all of you who came along to support us – we hope you enjoyed it as much as we did!

The Egerton Players are currently busy rehearsing for their forthcoming evenings of two One Act Plays. We are already planning our next production, two one-act comedy plays. Performance dates are 22<sup>nd</sup> and 23<sup>rd</sup> March 2019 at 7.30pm in the Millennium Hall and tickets will be available via the Egerton Players website shortly. The plays are:- : **White Lies** a comedy by Richard James - four old university friends meet up again after thirty years, with some bent on revenge directed by Vanessa Perrin and **The Fat Lady Sings** by David Tristram - another hilarious Little Grimley offering directed by Neil Crossley- Roberts.

other hilarious Little Grimley offering directed by Neil Crossley- Roberts.

**Mark Weeks**  
Mechanic/Panel Beater

Forge Engineering Works  
Pye Corner  
Ulcombe  
Maidstone, Kent  
ME17 1EH

**MVR**  
Marks Vehicle Repairs  
Servicing  
Diagnostics  
Welding  
Air Con  
Etc.

01622 858866  
07425 768202  
mvr116@outlook.com

Over 30 yrs experience  
Fully Insured

### 100 club Draw

Here's the Draw results since the last edition:

#### November

£100 Alison Robinson  
£50 Gary Robinson  
£25 Alison Hopkins  
£25 Sylvia Homewood

#### December

£100 Chris Hopkins  
£50 Joan Smyth  
£25 Phil Missing  
£25 Sarah Elworthy

#### \*\* Christmas Bonus Prize \*\*

£25 Lee Smyth  
January  
£100 Susanna Lumley  
£50 Martin Wilkinson  
£25 Jane White  
£25 Mike & Alexandra Bayley

The Sports Pavilion 100 Club membership costs £50pa for the 11 Draws in a year with prizes of £100, £50 and £25 (x3). If you are interested in joining the 100 Club, please contact Jonathan Elworthy on: 07802 499577 or by email:

[info@egerton100club.org](mailto:info@egerton100club.org)

**J SKILTON 4 RUBBISH  
CLEARED SERVICE**  
HOUSEHOLD, GARDEN, HARDCORE, ETC.  
SMALL TREES AND HEDGES CUT AND CLEARED  
BETTER THAN A SKIP – WE LOAD IT  
ALL AREAS COVERED  
EST 1998 • E A REG  
Phone John/Jayne 07885 944876 Anytime  
[jayne.skilton@btinternet.com](mailto:jayne.skilton@btinternet.com)



## Can you help with transport?

Lee Robinson, volunteer services co-ordinator for Ashford volunteer centre is appealing for drivers who can cover Egerton and the surrounding villages

Ashford Volunteer Centre runs a successful Volunteer transport scheme. The success of the scheme is often dependent on matching service users with their nearest driver in an effort to reduce costs to a minimum.

As such we are looking for drivers to cover particular areas in the Ashford Borough. Having lost our Volunteer Transport Coordinator recently it has not allowed us to target these areas as much as we would like but aware we have service users with the need of our service.

Pluckley, Smarden and Egerton are some of those areas. Our Volunteer Car Service offers a service for ill, disabled, frail and elderly people who cannot easily manage on public transport. We understand this is a particular issue in rural areas.

We aim to help all people with mobility problems whether temporary or permanent. Our drivers cover the whole of the Ashford Borough, take passengers any distance for essential appointments, shopping trips and visiting friends.

The number and times of journeys vary; flexible availability would be required. All volunteers require two satisfactory references along with a Disclosure & Barring Service check (these will be organised by the Volunteer Centre)... although a criminal record will not necessarily be a bar to volunteering with our organisation.

Volunteer drivers will be required to possess the following:

- Use of own vehicle
- Full, clean driving licence, insurance & MOT (if applicable)
- Friendly, patient and approachable manner

Volunteers receive on-going support; chances to meet on a one-to-one basis are also given, along with informal get-togethers and newsletters. Training is offered throughout the year and further arrangements can be made to meet personal needs or specific requirements.

Ashford Volunteer Centre will cover mileage expenses.

Drivers need to make their car insurance company aware that they will be driving as a volunteer; the insurance company will then endorse this on the policy. There should be no cost for this. Whilst driving for journeys booked through the Car Service you will be covered by our liability insurance.

If anyone is interested please contact Ashford Volunteer Centre on 01233 665535 or via [contact@ashfordvc.org.uk](mailto:contact@ashfordvc.org.uk)

**Volunteer Centre**  
Ashford

## Joshua Lumley Ltd

### Antique Oriental & European Rugs



**Large stock of antique and contemporary rugs and runners. Valuations and expert advice**

Stonebridge Barn, Egerton, Ashford, Kent TN27 9AN

Viewing by appointment only

[josh@joshualumley.com](mailto:josh@joshualumley.com)  
[www.joshualumley.com](http://www.joshualumley.com)

01233 756072  
07900 901756

## HOME DECORATING SERVICES

### Lady Decorator

Feel like making a change to your home?

No job too small

For a FREE estimate and to discuss colour schemes...

call Jenny on

**07807 419942**

Watch out for more top notch events organised by the Music Festival Committee in the run up to the next Egerton Music Festival in July 2020.

south east water

**We work 24/7 to deliver high quality drinking water to you.**

For updates in your area on repairs or planned work go to [southeastwater.co.uk](http://southeastwater.co.uk)

Are you #WinterReady by protecting your water pipes and outside tap from freezing temperatures? Look at [southeastwater.co.uk/winter](http://southeastwater.co.uk/winter) for hints and tips.

To be a savvy water saver go to [southeastwater.co.uk/savewater](http://southeastwater.co.uk/savewater)

☎ 0333 000 1122

Facebook and Twitter: @sewateruk



Pure know h,ow



## Over 60s enjoy talks and showtime

### Sheila Palmer reports

October's meeting commenced with a presentation by Melanie Gibson-Barton on Wandering in the Flander Fields. Her interest in the subject started while trying to trace her great uncle George who lost his life in WW1 in this area at the age of 23. John McCrae, born on November 30th 1872, died on January 28th 1918 was a Canadian poet, physician, artist and a surgeon soldier during the Battle of Ypres in Belgium. He was best known for writing the famous war memorial poem *In Flanders Fields*. He died from pneumonia near the end of the war. He was in charge of the field hospital during the 2nd Battle of Ypres, a period that saw some of the most brutal fighting on the Western Front.

Moir Michael was inspired by McCrae's poem and went on to write additional verses for the poem and to make the poppy a symbol of global Remembrance. Melanie continued with a short history of the Menin Gate Memorial in Ypres. It marks the starting point for one of the main roads out of town that led Allied soldiers to the front line. It was unveiled on 24th July 1927 and has 40,2445 United Kingdom burials. Melanie continued on many other interesting subjects—for instance *The Last Post* is the Bugle call that signifies the end of the day's activities and is also sounded at Military funerals to indicate that the soldier has gone to his final rest. The October outing was a most enjoyable trip to The Criterion Music Hall at Sheerness for an Old Tyme Music Hall

**Coming up...**  
**Monday February 11th--Brian Laverick-Smith--30 years of Bother on the Hover**  
**Tuesday February 19th--Winter Warmer at Webbs Hotel, Folkestone**

show, with afternoon tea served on real bone china to each table during the interval. We thank Gerry for arranging this. November 18th was our AGM. It was good to see more members than normal attend this meeting. It was our 53rd birthday. The Treasurer reported that finances were stable, thanks to our annual anonymous donor and Hawks Nest Trust, the monthly stall and raffle our coffers remain afloat.

Gwen and Saisy were thanked for their many years service on the committee and were presented with bouquets.

Angela Plant was welcomed onto the committee which has now been reduced from 11 to nine. After a Guess the Flower Quiz tea was served and the raffle drawn.

Our cuppa and natter meeting in December was most enjoyable. The staff and children of the primary school presented a collection of Christmas songs before Santa arrived with his sack of goodies for them. It was a delightful entertainment, much appreciated by all. This was followed by refreshments and the distribution of gifts and cards to all members from the Club and the exchange of cards amongst members—what a saving on postage !!

Due to inclement weather the Xmas fayre was held in the Millennium Hall. It was a very pleasant afternoon and we would like to thank everyone who supported our Clubs Tombola.

We also helped with teas etc and our final takings amounted to £238—we do thank all our members for their prizes—not bad for pensioners !!! Finally on December 11th we held our Christmas lunch in a Hotel on the seafront at Dover.

We had a grand meal in the Ballroom—they did us proud. Here I must thank our committee headed by Gerry, for a year of hard work on our behalf.

We do really appreciate their time spent providing such an interesting programme.

## Total Roofing & Building Services

Sylvilla Canterbury Road

Chilham, Canterbury CT4 8AG

Tel: 01227 731845 Mobile: 07796 165289

- For all your roofing works
- Slates, Kent pegs, new roofs
- Facia Boards, Soffits &
- Guttering
- Flats Roofs
- GRP Fibreglass Roofs
- Lead Work
- Chimney Work & Repointing
- Decorating
- All Building Works



## Kingsfords SOLICITORS

### Talking your language...

- |   |                               |
|---|-------------------------------|
| ◀ Residential Conveyancing                | ◀ Disputes and Court Claims   |
| ◀ Commercial Property & Business Services | ◀ Employment Law              |
| ◀ Wills, Estates and Inheritance Tax      | ◀ Divorce                     |
| ◀ French Property                         | ◀ Family Law/Child Protection |

### OFFICES IN ASHFORD, HYTHE & CRANBROOK

All enquiries to:

**01233 665544**

Email: [enquiries@kingsfords.net](mailto:enquiries@kingsfords.net)

[www.kingsfords-solicitors.com](http://www.kingsfords-solicitors.com)

# Need new wheels to get to work?



With public transport limited in our village, residents may be interested to know of a charitable project called “Wheels to Work” which describes itself as an “affordable moped loan scheme”. It aims to provide two wheel transport (mopeds and bicycles) at affordable rates to anyone who is eligible with a driving licence (provisional or full).

Riders who join the scheme benefit from the use of a fully taxed and insured 50cc or 110cc machine, all the necessary protective clothing— helmet, jacket, gloves and hi-vis vest and the charity also takes care of the servicing, maintenance and any breakdown cover.

The charity says that the scheme cost is around £5.00 per day, plus fuel, and compares favourably with other forms of public transport and offers the flexibility that having your own wheels affords.

“Wheels to Work Kent” is a charitable project run by East Surrey Rural Transport Partnership, supported by Kent County Council.



Further details are on the charity’s Facebook page (W2W Kent) and its website [www.w2wkent.co.uk](http://www.w2wkent.co.uk).



## Cascade Insurance Services

Your Local Insurance Broker

### For your Home:

Buildings  
Contents  
Travel  
Car

### For Your Business:

Home Offices  
Tradesman  
Salons  
Liability

Call Julie on 01233 840505 or 07855 432832 for a quote or advice

[www.cascadeins.co.uk](http://www.cascadeins.co.uk)

Cascade Insurance Services Ltd is an Appointed Representative of Ten Insurance Services Ltd who are authorised & regulated by the Financial Conduct Authority.

Financial Conduct Authority registration number 671766





## Santa sweeps into village hall

All good plans don't always go the way you want them to. The plan was to hold this year's fair on the Glebe as usual to get the unique atmosphere of an outdoor Christmas Fair. In the days leading up to the 8<sup>th</sup> December the forecast for high winds and rain became too much of a reality for the committee to have no choice but to re-plan for an indoor fair in the village hall. Pat Parr reports:

### MYOFASCIA REFERRALS

**TREATING TRAUMA, ACUTE AND CHRONIC PAIN,  
SPORTS INJURIES, STRESS AND OTHER CONDITIONS.**

#### DO YOU HAVE... ?

- Headaches or Migraines
- Neck pain or stiffness
- Sciatica
- Back Pain
- Sports Injury
- Muscle Strain
- Scar tissue
- Arthritis
- Cold Hands and/or Feet
- Physical or Emotional Trauma
- Stress
- Irritability
- Chronic Fatigue
- Fibromyalgia

**IF YOUR ANSWER IS YES, MYOFASCIA THERAPY MAY HELP YOU.**

THE CHARING SURGERY, 1 SURGERY CLOSE,  
CHARING, KENT TN27 0AW

STANIA MISSING HMM  
**07795 525 128**

As it turned out they made entirely the right decision for most people not wanting a ride with Santa as the winds were strong, the temperature very cold and to top it all the rain started at about the same time as the first tractor ride started with poor Santa and all children and parents who went round the village for their exciting tractor ride round the village who got very cold and wet indeed. Also feel very, very sorry and grateful to the owner of the tractor, Graham Howland, for being so exposed to the elements from his driving seat for a very long afternoon! Thank you very much Graham.

Inside the hall was a very different story. Everyone seemed really grateful to be in the warm. Stalls started straight into the hallway with the Pre-School. There you

#### Wealden Insurance Services LLP Commercial & Personal Insurances



'Parrsmere',  
Egerton, Ashford,  
Kent TN27 9BX  
T/F 01233 756520

E: jeff.hopkins@btconnect.com

Wealden Insurance Services is a Limited Liability Partnership No OC300788 Authorised and Regulated by the Financial Conduct Authority

Members: Jeffrey Hopkins, Richard Millen, Michael Wright



#### Egerton Sports Pavilion Recreation Room To Let

(approx 6m x 4m plus small, well-equipped kitchen)  
Ideal for small parties, club/society meetings, lectures & talks



**Fee £5ph (village residents)  
Or £7.50ph (non-village residents)**  
Contact: Bill Smyth  
**01233 840362**

**PHIPPS MOTORS**  
*of*  
**Smarden**  
est. 1984  
Tel: 01233 770171  
www.phippsmotors.co.uk

**Vehicle MOTs,  
Servicing & Repairs,  
Fault code diagnostics.**

**Kenfield Coachworks**  
Mill Lane, Smarden TN27 9NW  
*Your local family run garage*



## Santa Sweeps into village hall cont...



could enter the Teddy Tombola and win - yes, you've guessed it, - a Teddy! A multitude of sizes, colours and faces. Also available there was reindeer food (in case you wanted to visit the local Reindeer Centre), lollies (not the icy type) and on another table they had a marvellous selection of children's books for all ages.

Inside to the main hall was a lovely sight with a beautifully decorated Christmas

tree, all the wonderful huts lovingly Christmassified (I made that word up) with mistletoe, holly, tinsel, ribbons etc. A huge hum of chatter, excited children and general chit-chat amongst acquaintances who maybe hadn't seen each other for a while and it even seemed to make the hall seem rather small it was so packed with people most of the time.

The Barrow House were in the kitchen where they produced their famous French Onion Soup with Cheesy Croutons and TBH Hot Dogs with mustard mayo or "Tommy K".

Also in the obvious place in the kitchen

you could get a hot cup of tea or coffee and soft drinks.

Beyond the kitchen with the committee room counter open to the main hall was the ever-popular mulled wine, mince pies and mistletoe in aid of St. James' Church. I heard words of praise for the mulled wine many times during the afternoon.



### CHRISTMAS ON THE GLEBE 2018 PRIZE WINNERS

Thank you to Revd. Sheila Cox for judging the competitions

Colouring competition 7 and under  
Evelyn Chapman

8 + Jack Hills Special mention

Biscuit competition Child-Alice and Poppy – Reindeer sitting in the sleigh  
Adult WI Raffle

Hamper 1 : Pink Ticket No:65 - Colin from Egerton shop.

Hamper 2 : Blue Ticket No:97 - Heather James

Hamper 3 : Blue Ticket No:251 - Gill Harper

Hamper 4 : Pink Ticket No:63 - Vanessa Perrin

*The organising committee would like to thank all the helpers who took part in the setting up and taking down, and also the stallholders who all helped make the event such a success. Also thanks to Graham Howland and Father Christmas for battling the elements on the tractor ride!*

## Make positive life changes

- Life Changes • Confidence • Relationships • Managing Life
- Communication • Anxiety Stress & Depression
- Health & Wellbeing • Self-esteem • Changing Negative Patterns

Yvonne Fernando

Certified NLP Master Practitioner & Life Coach

T : 01233 878474 M: 07968 785714

[www.yvonnefernandonlp.co.uk](http://www.yvonnefernandonlp.co.uk)

BEGINNERS AND GENERAL CLASSES

YOGA

EGERTON MILLENNIUM HALL



TUESDAYS 6PM AND 7.30PM, THURSDAYS 1.30PM

DROP-IN CLASSES FROM £6

Fully qualified IYENGAR™ yoga teacher

CONTACT [leo@lifebalanceyoga.co.uk](mailto:leo@lifebalanceyoga.co.uk) or 07775 720183

[www.lifebalanceyoga.co.uk](http://www.lifebalanceyoga.co.uk)

## Village Hall comes clean!

A significant amount of overgrown vegetation and weeds have been removed from the side and rear of the Millennium Hall and the car park, resulting in a much tidier appearance and even reinstating a little more car parking space.

Several years of unchecked growth of small bushes and weeds was cut back by Parish Councillors Graham Howland and Peter Rawlinson, in their spare time, after it had started to encroach on some of the car parking spaces closest to the hall entrance. The excess growth was also causing an unsightly blockage of the service path at the rear of the hall and some of the tree branches were interfering with the roof guttering and tiles.





## Music for all—diary dates



**Save the dates for the 2019 concerts on Friday 5th July and Sunday 7th July and the 2020 Music Festival from 1st - 5th July**

On Friday 5th July 2019 Isata Kanneh-Mason comes to Egerton. At 21, Isata is the eldest of the incredibly talented Kanneh-Mason family, and is currently a post-graduate student at the Royal Academy of Music where she has already won many awards as an undergraduate. She now performs nationally and internationally, either as a solo piano recitalist or as a trio with her brothers, Braimah (violin) and Sheku (cello).

In this concert, Isata's programme will include works by Clara Schumann, and Chopin Preludes. 2019 is the bicentenary of the birth of Clara Schumann, a child prodigy who became one of the most distinguished composers and musicians of the Romantic era. On Chopin's Preludes, the author George Sand wrote - 'The gift of Chopin is [the expression of] the deepest and fullest feelings and emotions that have ever existed.'

**Details of the concert on Sunday 7th July will be announced very shortly. Tickets for both concerts will go on sale on 27th April.**

**The 2020 Egerton Music Festival** will include old favourites such as the Jazz Supper and the Picnic in the Garden, the opera La Traviata, an evening of comedy and comic songs, and much more.



### Luke Epps Window Cleaning and Property Maintenance



- Conservatory roof cleaning
- Gutter cleaning and emptying
- Roof repairs and chimney repointing
- Fascia and soffit cleaning and replacement
- Painting
- Patios

To discuss any of your property needs please contact:  
Egerton 01233 756458 / Mobile 07970 774479  
Smeeth 01303 814151 / [lukeepps@hotmail.co.uk](mailto:lukeepps@hotmail.co.uk)

## WEALD SMOKERY THE KILN ROOM

FINE FOOD EXPERIENCE

**AWARD WINNING DELICATESSEN**  
SMOKED FOOD  
CHEESES  
WINES  
GOURMET FOOD

**THE KILN ROOM BRASSERIE**  
BREAKFAST  
LUNCH  
TEA

VISIT US AT THE WEALD SMOKERY SHOP FOR...

**25% OFF**

SEE BLACKBOARD OUTSIDE SHOP FOR WEEKLY OFFERS



Visit us at The Weald Smokery & The Kiln Room,  
Mount Farm, Flimwell, East Sussex TN5 7QL

For more information and to buy online please visit  
[wealdsmokery.co.uk](http://wealdsmokery.co.uk) or call 01580 879601

OPENING TIMES:  
8.30AM TO 5.30PM – MONDAY TO SATURDAY  
LAST LUNCH ORDERS – 3:30PM  
LAST TEA ORDERS – 4:30PM

JOIN US ON :



Search Weald Smokery



@thewealdsmokery



# What's on in and around Egerton

COME AND JOIN US  
IN THE MILLENNIUM  
HALL FOR THE



## VILLAGE PARISH ASSEMBLY

Thursday 21<sup>st</sup> March 2019

7.30PM

JOIN US FOR A GLASS OF WINE OR OTHER  
LIGHT REFRESHMENT



AND MEET REPRESENTATIVES OF THE  
VARIOUS CLUBS ACTIVE WITHIN THE VILLAGE  
SEE THE LATEST ON THE NEIGHBOURHOOD  
PLAN

## Diary Dates

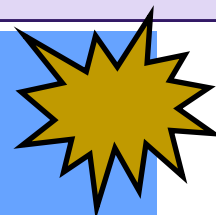


### Music Concerts on Friday 5th July and Sunday 7th July 2019

Tickets for both concerts will go on sale  
on 27th April.

### QUIZ NIGHT: FRIDAY APRIL 26th 2019

In aid of Alzheimer's  
Research



Quiz on Friday 26th April in the Millen-  
nium Hall 7.00pm for 7.30pm to raise  
funds for Alzheimer's Research.

Teams of 6 @ £30 per table. Bring your  
own nibbles and drink and glasses.  
To book a table contact Jennie White  
01233 756747.



## FOLK and Blues CLUB

Meets from 8-11pm at

The Barrow House, The Street,  
Egerton TN27 9DJ

On the last Tuesday each  
month except July & Dec

29 Jan, 26 Feb, 26 Mar,  
30 Apr, 28 May, 25 June

Everyone, all ages welcome from novice to virtuoso –  
use this event as a sounding board, give it a whirl with  
any type of music or lyrics. Or just listen!

## Get fit and have fun!

Egerton Running Club is your local running club and we would love you to come and  
join us! Beginners, intermediates and experienced runners are all welcome. We  
run every Sunday morning with a welcomed refreshments stop! Plus there are  
opportunities to run on a Wednesday or Friday morning. We are a friendly bunch of  
all ages and abilities and do lots of other activities during the year to increase our  
fitness and have fun!

Find out more by visiting our website or sending an e.mail, addresses  
detailed below:

Website: [www.egertonrunningclub.co.uk](http://www.egertonrunningclub.co.uk)

E.mail: [info@egertonrunningclub.co.uk](mailto:info@egertonrunningclub.co.uk)

Or visit our Facebook page.  
We look forward to hearing from you!

Pluckley with  
Egerton Garden  
Society Talk



"Grow Great Veg". by Pippa Greenwood  
20th February at the Millennium Hall.  
Doors open at 7.00pm

Call Sue on 840320 or Mary on  
756588 for tickets, which are also on  
sale in the Pluckley Farm Shop and  
Pluckley Butchers and cost just £7.50

## 1st Headcorn Scout Group's Famous Quiz NIGHT Saturday 30th March 7:30pm start

Teams of 6

£10 per person (*including homemade  
hot meal and cake*)

BAR selling various drinks

Egerton Village Hall

Book tickets with Kevin Harper on

01233 756659 or email

[kevinharper623@btinternet.com](mailto:kevinharper623@btinternet.com)

Do not delay we sell out quickly !





# Marie's close shave at the R&C



"Macmillan Nurses provide an amazing service for cancer patients and their families. I have had friends and family who have been affected by cancer, and have seen firsthand how much their support means to people. I wanted to raise money for the charity and when I saw an advert on FaceBook for 'Brave the Shave' I thought: "why not?" So on 3<sup>rd</sup> November 2018 I did exactly that.

The Rose and Crown at Mundy Bois generously provided the venue and a lot of people came to support me. The sponsors and support has been amazing. Although I am still

waiting for the official confirmation of the total raised, at last count it is in the region of £2,500 for the charity!!! This made having my hair cut worth while!

I'd like to thank Dermot at the Rose & Crown, those who watched me 'brave the shave' and to everyone who sponsored me."

**Marie Smith writes about how she " Braved the Shave" for Macmillan Nurses**



**Try Our Home News Delivery Service For FREE**

**8 Weeks of delivery NO CHARGE**

**plus**

**8 Weeks of any newspaper HALF PRICE**

Have your paper delivered before you go to work and read it with your breakfast! We can deliver to your house by

**6.30am**

from Monday to Friday  
and an hour or so later on Saturday & Sunday

Place your order today by telephone on **01580 763183**  
or email us at [mail@jackiesnews.co.uk](mailto:mail@jackiesnews.co.uk)  
or go to [www.jackiesnews.co.uk/place-your-order](http://www.jackiesnews.co.uk/place-your-order)

New customers only  
You will be advised in a welcome letter of what delivery charge will apply when the 8 week period ends.  
Please contact us if you want the delivery to stop at any time.

**Office and storage units available**

**At Pevington Farm, Egerton Road, Pluckley.**

**Ask for Andrew on 01233 840902 or 07718 463420**



STONE BARN  
STONEBRIDGE GREEN ROAD  
EGERTON  
TN27 9AN

TEL: 01233 756 797  
MB: 07958 355 677  
WB: OSTEOPATH-KENT.COM

[ANGELINA@OSTEOPATH-KENT.COM](mailto:ANGELINA@OSTEOPATH-KENT.COM)

**ANGELINA LUMLEY**  
**OSTEOPATH**

BA (HONS) BSC (HONS) OST

## A story of Christmas and Brexit!

**Christmas may be over, but what went on beneath the mytheltoe ? Spot at least 21 politicians and 9 political parties within this personal view written by Lois Tilden - if you are still in party mood and have poetic licence enabled....**

What was in your Christmas stocking? Some gold brit-coins that frankly made less sense than myrrh? An antidote to alleviate the indigestion caused by chronic political mayhem and a few Kentish corbnuts thrown in?

Unfortunately, it had been impossible to give any assurances in advance about the contents of Christmas stockings. Father Christmas had been distracted from his top priority. He had lost sleep worrying about the prospect of different tariffs being imposed on his rudderless sleigh-load each time he crossed the Channel or the Irish Sea. He had needed convincing that a better deal could be secured to avoid being sandwiched in a stack over Dover with no likelihood of a response to Mayday calls and facing unfair competition from the Amazon. Leading up to Christmas Eve he was droning on about his air space being tainted by the fallout from Brussels sprouts on his homeward journey.

Mrs Christmas had been doing her best on the morning of Christmas Eve to keep her husband re-energised with Lucasaid for the big night ahead and had added liberal sprinklings of cinnamon to his fair trade coffee to perk him up, but he hardly touched that or her offering of ukippers. All the efforts Mrs Christmas made took their toll on her. When she shook the Frosties at him and offered him the alternative of eukippers or hammond eggs she thought she heard him mutter "stupid woman". He insisted he had muttered "stupid snowman" - the excuse being that he had just looked behind him through the window, observing that the snowman was going into meltdown under the pressure of it all. Mrs Christmas had, however, become weary of keeping up appearances like a pantomime dame over a long season and fared better at lip-reading than ad-libbing. She had plenty to mull over and it dawned on her that she had been duped into labouring over the Aga to make mountains of mince pies that might end up in the food waste bin just because she had added Napoleon brandy to the mixture.

The usually co-operative elves had been thinking of staging a protest in case their seasonal contract had to be re-negotiated over the next 12 months, with the threat of it becoming a zero-hours phoney franchise. The outcome was partly dependent upon how many times the North Pole post might be moved - and if it ended up closer or further away from Greenland. Top steward Elf Ike in particular feared their generous terms and conditions of service would be snipped or that their jobs would go over to leprechauns if they no longer had recourse to the European Court of Jesters. He walked off the shop floor to take a call from Noel Edmonds about tapping experience from his show "Deal or No Deal" and made copious notes. The resulting 585 page document about package-binding commitments and jingle bell frequencies was eventually published but was left on the parcel shelf.

The turkeys were still waiting for the opportunity to vote for their cause and were disappointed yet again that the ballot had been deferred. The Abbotsbury Swannery had initially offered a safe haven but couldn't get their numbers right and it came to nought; Manston Airport was suggested by the grey lemming but this didn't get off the ground. This was because Chinese whispers had led "Project launch a flight" to alter to "Project lot of fright" and then to "Project lorry freight". Accordingly, without any alternative exit plan, on Christmas Day the turkeys were not sitting at the table sharing the gravy boat with their best western allies, but on it with the usual stereotypical suspects. The swedes' position was an anomaly.

Being strict vegans, the all-male reindeer sleigh team became unsettled due to the prospect of a dog's breakfast and were poised to pack their Antler suitcases with thornberries, sourberries and gluten-free carrot cake. When Father Christmas threatened to find the unicorn to rein in their place they were not impressed. It took all of Red Nose Rudolph's pulling power and a flick from the chief whip to cajole them into re-entering the Eurora Borealis that had been occluded by a reesmog. This was tough on poor Rudolph as he had led some unruly herds in the past and had been showing signs of post-democratic Blues syndrome. His response to essential eucalyptus oil did nothing to bring quantitative easing to the frog in his throat but he was determined not to turn husky.

On return from the world tour, Father Christmas handed Rudolph an additional role as squeaker for the parliament of snowy owls. So the hootenanny on New Year's Eve was destined to be subdued, despite Jools Holland's efforts to go Dutch with Francois Hollande and get plastered in Paris. To make matters worse the National Elf Service and the Chief Sturgeon had only half-promised to look into the scope for advance supplies of cough medicines, hangover remedies and mourning sickness tablets before the hot cross bunfight due to start on Good Friday, followed by the Easter bunny arriving with breggsit. Meanwhile there was an increasing chance that the Arctic fox would take

advantage of the situation in line with his general practice and hunting instinct. He was cleverly relying on Rupert and the other bears being so polarised that he would get his Christmas dinner early. Behind the scenes, the once placid comfy

*Cont on page 20*



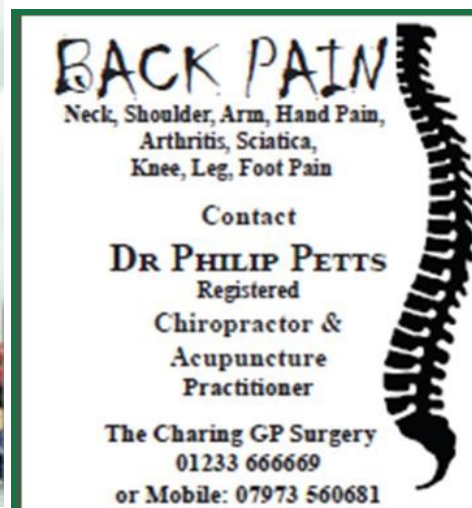
**Pluckley Farm Shop**  
at the former Weeks Garage, Smarden Road

*Open 7 days a week!*

Monday - Friday 9 - 6; Saturday 9 - 5; Sunday 10 - 4  
Telephone: 01233 840400      www.pluckleyfarmshop.co.uk

*Supporting producers of Kent farm and fine foods*

The advertisement features three small images at the bottom: a basket of bread, a bottle of wine, and a tray of fresh vegetables.



**BACK PAIN**  
Neck, Shoulder, Arm, Hand Pain,  
Arthritis, Sciatica,  
Knee, Leg, Foot Pain

Contact  
**DR PHILIP PETTS**  
Registered  
Chiropractor &  
Acupuncture  
Practitioner

The Charing GP Surgery  
01233 666669  
or Mobile: 07973 560681

The advertisement includes a graphic of a human spine on the right side.



## Neighbourhood Plan: survey, sites and design statements

### Egerton's Neighbourhood Plan Steering Group update us on progress

#### Housing Needs Survey

A big thank you to everyone who completed the housing needs survey. There was a 40% response, which is considerably more than the average response to similar surveys, and which will give us a good idea of what the current and, potentially, future needs of the village may be. Once our housing consultant's report on the survey has been finalised, we will be adding its findings to the Egerton Neighbourhood Plan web site at [www.egertonnp.co.uk](http://www.egertonnp.co.uk)

#### Site Assessment Criteria

The Steering Group is also working with planning consultants (from the South Downs National Park Authority) to finalise the site assessment criteria published last summer and to ensure objectivity when used to evaluate potential sites. With the consultants' advice, and after consultation with Ashford Borough Council to ensure compliance with local and national criteria, we will also add the site assessment criteria to the web site.

#### Green Spaces and Key Views and Vistas

The steering group has continued the work on Views and Vistas begun in our consultation process through workshops last summer, and will be publishing a range of photographs and map references on the web site. We now need to develop policies and consolidate evidence to support them, under the 'Protect' section of our neighbourhood plan. Two of the policies will cover both the green spaces which should be protected in and around the built areas in all the village settlements to maintain their character, and the larger, wider views that protect the village's natural Greensand Ridge and Low Weald landscape.

Please take a look and make suggestions so that we can finalise the list.

#### Local 'heritage' sites

At the suggestion of our consultants, the steering group has also compiled a provisional list of local 'heritage' sites and features that should be considered for protection, in addition to those already known or scheduled officially as Listed buildings or monuments inside or outside the conservation area. This provisional list will also go up on the web site and includes sites such as Pembrs Cross and Newland Green, and structures such as cast iron signposts, the stone mounting block on Rock Hill Road, and boundary stones and markers.



As with the green spaces and key views, please take a look and make further suggestions so that we can finalise the list.

#### Egerton Parish Design Statement

The published Design Statement will form part of the Neighbourhood Plan but, at the suggestion of the South Downs consultants, members of the Steering Group are reviewing the additional building work that has been undertaken over the 10 years since its publication. The review will determine whether any updating to the principles is needed to reinforce or amend the guidelines and underpin the Neighbourhood Plan.

**B. J. LUCKHURST**

**BUILDERS and DECORATORS  
PLUMBING**

**No job too small  
Free Estimates  
No VAT**

**01233 646983  
Mobile 07880 734807**

An advertisement for Hydroworks, a water softener and filter specialist. The ad features a large image of a chrome faucet with water flowing into a glass. The Hydroworks logo is at the top, with the text 'E.R Longley' and 'In 1926'. Below the logo, it says 'SALES SERVICE SALT FILTERS' and 'Your local water softener and drinking filter specialist'. A circular badge on the left says 'FREEPHONE 0800 999 4117'. At the bottom, it lists phone numbers for Kent (01304 606 100) and Sussex (01444 891 004), the website [www.hydroworks.co.uk](http://www.hydroworks.co.uk), and the email [hello@hydroworks.co.uk](mailto:hello@hydroworks.co.uk).



# Local Church Services



## EGERTON FREE CHURCH

**Contact: Ambrose Oliver**  
**01233 756459**

**Email:**  
**Egerton-freechurch@gmail.com**

**Website:**  
**www.egertonfreechurch.org.uk**

Sunday Services at 2.30pm. (Good Friday 10am.).  
(Planned Rota is flexible).

### Services led by Elders or by Guest Ministers

(  
February 3<sup>rd</sup> Norman Hopkins. Pastor of Waterford Evangelical Church, Strood.)

February 10<sup>th</sup> Danny

February 17<sup>th</sup> Ambrose

February 24<sup>th</sup> Theo

March 3<sup>rd</sup>. Danny

March 10<sup>th</sup> Ambrose

March 17<sup>th</sup> Pastor (rtd) Peter Buss, Bethersden.

March 24<sup>th</sup> Theo

March 31<sup>st</sup> Danny

April 7<sup>th</sup>. Ambrose.

April 14<sup>th</sup> Theo

(10am) April 19<sup>th</sup> GOOD FRIDAY (Elders)

April 21<sup>st</sup> EASTER. Rev Peter Michell, Gelford Chapel, Cranbrook.

April 28<sup>th</sup> Danny

## EGERTON, ST. JAMES

### G7 Church Services November, December 2018 and January 2019

#### FEBRUARY

Sunday 3<sup>rd</sup> Candlemas 09.30 Family Service

Sunday 10<sup>th</sup> 4 Before Lent No Service in Egerton

Sunday 17<sup>th</sup> 3 Before Lent 09.30 Matins

Sunday 24<sup>th</sup> 2 Before Lent 09.30 The Eucharist

#### MARCH

Sunday 3<sup>rd</sup> Sunday Before Lent 09.30 Family Service

Sunday 10<sup>th</sup> Lent 1 No Service in Egerton

Sunday 17<sup>th</sup> Lent 2 09.30 Matins

Sunday 24<sup>th</sup> Lent 3 09.30 The Eucharist

Sunday 31<sup>st</sup> Lent 4/Mothering Sunday No Service in Egerton\*\*

\*\* There will be a special Benefice Service to celebrate Mothering Sunday in Westwell Church at 10.30am. All are very welcome to come with their families.

#### APRIL

Sunday 7<sup>th</sup> Lent 5 09.30 Family Service

Sunday 14<sup>th</sup> Palm Sunday 08.00 Holy Communion (BCP)

Sunday 21<sup>st</sup> Easter Sunday 09.30 Family Eucharist

Sunday 28<sup>th</sup> Easter 2 09.30 The Eucharist

For details of services in all 7 churches of the G7 Benefice please visit the website: [www.g7benefice.org](http://www.g7benefice.org) or take a copy of Pew News from the table in the church. You will find a warm welcome in any of the churches.

If you would like to speak to someone about Baptism, Confirmation, a Wedding Service or any other matter please contact:

Reverend Canon Sheila Cox (Rector) 01233 712598 [sheilacox@g7benefice.org](mailto:sheilacox@g7benefice.org)

Reverend Jack Bateson (Curate) 01233 756674

### Cont from page 18...

female reindeer felt as if they had been dancing like angels on the tip of a pine needle, trying to work out the best option for meeting the wishes of the male majority yet conservatively pressed by tradition to keep things sweet with blind dates. Rebellion was brewing. Consequently these does became "do nots" and wouldn't be placated by vague terms of endearment, nor convinced by the nebulous temptation of soft velvet. Independently they were making contingency plans for a hard winter and had sinfully trotted a feint line in the snow to designate their own bedsit refuge. Mrs Christmas, sympathetic to their struggle and alert to climate change, used her hitherto latent skills in D-I-Y to put up more permanent signs stating "BUCKS STOP HERE". (She would have shoved a similar one up the chimney too, had it not risked invalidating the house insurance.)

That said, everyone in Lapland mustered up some goodwill and had the presence of mind to attend a joyful Carol service on a live-link to Egerton before the delivery of gifts commenced. Christmas night passed smoothly and no glitches were noticed by the casual observer or picked up via the bush telegraph. They all took pleasure in a well-earned rest on Boxing Day: letting the split hares get on with it - gloves off - and playing family charade games, watching cable television, stirring keir royale cocktails and being entertained over the 12 days of Christmas by flying piglets pulling white rabbits out of a hat. Happy New Year!



## Pluckley presents Sleeping Beauty



Pluckley Panto Unlimited presented its 34th Panto production, *Sleeping Beauty*, in early February.

Panto-goers were treated to a colourful—and somewhat unconventional version of the famous fairy tale—with undercover spies, a racing pigeon, a Wicked Witch from Egerton (!!!) and a texting Prince and Princess joining the more traditional fairies, hobgoblins and King and Queen!

The performances took place in the newly-extended Pluckley Village Hall.

The cast and crew are hoping to continue the Panto tradition in 2019 and would welcome any new faces who want to become involved in the fun production. Contact [Judith.pool@hotmail.co.uk](mailto:Judith.pool@hotmail.co.uk) if you would like to get involved to either tread the boards or work behind the scenes.



### Mower Plant Services Limited

Sales Service Parts Repairs Accessories

Sunpatch Farm, Headcorn Rd

Smarden, Kent TN27 8PJ

Tel: 01622 890046

Email: [sales@mowerplantservices.co.uk](mailto:sales@mowerplantservices.co.uk)

Open Mon-Fri 8.30am - 5.30pm Saturday 8.30am - 1pm

EMPLOYED SKILLED WORKFORCE | RENOVATIONS & EXTENSIONS  
CONVERSIONS & ALTERATIONS | DESIGN & BUILD



A.T. PALMER LTD

RESTORATION SPECIALISTS EST.1949

T: 01233 770077

Smarden Business Estate, TN27 8QL

[atpalmer.co.uk](http://atpalmer.co.uk)



## WAR MEMORIAL SEAT — GIFT TO VILLAGE



It was with great pleasure that the Parish Council accepted a very generous offer from villagers Royce and Kim Parker to donate a brand new Memorial Seat to mark the 100<sup>th</sup> anniversary of the end of the First World War. Royce sent an email to the Council with colour photos of three choices of design and at their November meeting the Parish Council chose the one with a war horse and bright red poppies as the most poignant of the three.



The next decision was where to place the seat to best effect. A site meeting was held between the Parish Council and Mr and Mrs Parker and a spot on The Glebe, facing The Barrow House and a part-view down towards the Weald was felt to be just right. The seat was installed and made secure by Royce and Kim ready to be 'unwrapped'.

On the day of the Egerton Christmas Fair at midday an unveiling ceremony of the beautiful seat was attended by Royce and Kim and quite a few members of the Parish Council and parishioners. The seat was tried out by most people and found to be very comfortable indeed. Many thanks from us all

### Egerton Friends Coffee Mornings

will be in the Barrow House, Egerton, every Wednesday from 11am to noon. Coffee and Raffle—£2pp  
Do join us and have a chat and meet friends

**All Welcome**



# Thinking of selling or letting your property in Egerton?

*I can give you straightforward advice regarding the value of your house. Please call me on 01233 506260*



**Sarah Holgate**  
Specialist Rural and Village Agent



**HOBBS • PARKER**  
The Villages



# A HISTORY OF EGERTON. 1900—2000

The next piece from the Egerton history book is *Hop Picking*, written by Jean Gravett



## The Ledger Bin in Action

From my earliest recollection hop picking always has played an important part in our lives – you either loved the smell of it or hated it. Our family happened to enjoy the routine it brought into our lives – it was always looked upon as an out-of-doors seasonal occupation, where we worked amongst like-minded people. In late summer a bin was booked at Les Palmers' hop garden at Kingsden Farm in Bedlam Lane, some mile away from our yard gate.

When my sister and I were too young to have cycles we went as a family in the horse and wagon. Our twin cousins, Derryck and Bryan, would have been staying with us for the long school holidays. They did not like hop picking and went to great lengths to get out of it. I remember on one occasion we were all ready to leave and they were missing – we discovered later they were down the

bottom of the house meadow laying on the chicken house roof watching us searching, and came out when we had left without them.

Picking usually commenced late August and continued until the crop was harvested. Wet or fine the picking continued. There was a break at midday when the measurer came to the bin to empty your mornings work. He scooped the hops out with a bushel basket into a large green hessian sack called a "Poke", which took 12 bushels of hops. It was then laden onto the horse-drawn cart and taken to the oast for drying. The measured bushels from your bin were recorded in a ledger by Mrs. Hilda Palmer. At the end of the season you were paid by a pre-arranged price per bushel – this was known as the "Tally". Each bin worked in a set that was a division in the hop garden. This contained an area of 24 hills ("Poles" or "a Drift") as the bins worked through the garden in a line, the line was in the charge of a "Pole Puller".

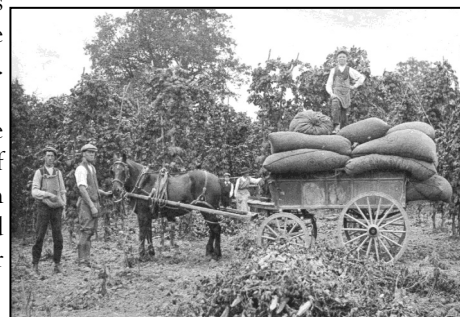
Once the hops had been dried in the oast they were pressed into a long sack of tough material called a "Pocket" which held approximately 168 lbs. They would then have been sold on to a brewery or to a dyeing company.

Hopping in Kent was a great time for some of the poorest Londoners who for generations of families came down by train, bringing their chattels on old

prams and hand carts. They lived in special purpose-built, hoppers huts – they shopped in our villages and spent their money in the pubs – in fact they briefly brought new life into our areas never seen before. The end of yet another familiar era passes.



**Bert, Stan and Nora Smith with Kate Gore 2nd from left**



**Wallie Harper and Ray Gore**



## J.D. MILLS ENGINEERING

AGRICULTURAL AND GENERAL ENGINEERS





**Servicing and repairs on agricultural tractors, sprayers and machinery either on farms or at our workshop facilities in Egerton.**



**Our work ranges from small bespoke single hand-rails and gates to being involved with large projects such as the Olympic Stadium.**

**We carry out structural steel for the agricultural and construction industry**

[www.jdmillsengineering.co.uk](http://www.jdmillsengineering.co.uk) | 
 [info@jdmillsengineering.co.uk](mailto:info@jdmillsengineering.co.uk) | 
 Office: 01233 756660 | 
 Mobile: 07860 809298





## Happy as a pig in muck!

Farm Shop owner and pig breeder Helen Baird is delighted that 2019 is the Chinese "Year of the Pig". She writes:

Last year was dubbed as 'Year of the Vegan' by the media. TV cooks and celebrities all embraced this diet as healthy eating, but I think the values of vegan were not fully embraced as the pledge goes beyond just what we eat. I'm not sure whether many celebrities threw away the Gucci leather handbag and the like. As I raise pigs for the food chain I was pleased



to see 2019 is 'Year of the Pig'! However, I soon realised that this relates to the Chinese zodiac and not a year of embracing the sausage! Pigs are not thought to be a smart animal in China. Apparently it likes sleeping and eating and becomes fat. Thus it usually features laziness and clumsiness in cartoons. Upon reading up on the Chinese zodiac

ac the positive side is a pig behaves itself, has no plan to harm others, and can bring affluence to people. Consequently, it has been regarded as a symbol of wealth in China. Free range farming is unlikely to make someone wealthy because it is labour intensive, but I do know that raising them is a joy. As an obsessive pig lover I hope you enjoy a few of these snap shots of my happy pigs.



Above left: Helen and Bob Gooseberry, Above right: Chrissie and bottom left: Suzy and Sarah

## TW PAVING

- \* Driveways
- \* Paths & Patios
- \* Landscape & Gardening

CALL TOM  
ON  
07989 137698

## Egerton Builders

Tel. (01233) 333838  
Mob. 07821 896845  
Email  
[egsmith@hotmail.co.uk](mailto:egsmith@hotmail.co.uk)

Extensions  
Conversions  
Renovations  
Alterations  
Repairs  
Refurbishment

Roofing  
Plumbing  
Electrical  
Carpentry  
Brickwork  
Plastering

Kitchens  
Bathrooms  
Domestic  
Industrial  
Commercial

And all other aspects of building and property maintenance

### Art on Show



The new Process Gallery has opened its door to local art lovers in Lenham Kent. The gallery combines the working studio of artist Nick Veasey, a stunning gallery space and in 2019, sculpture gardens. As well as showing Veasey's work, the gallery will in the future support other contemporary artists. It also provides a world first, as visitors will be able to watch Nick at work in the purpose-built X-ray chamber. Nick Veasey, is a Kent-based artist whose work is comprised of X-ray images.



# Remembering Derek Marks



**Derek Marks** was born on the 1<sup>st</sup> October 1933 in Maidstone and had a younger brother, Brian.

He was a cook on The Orsova of the Orient Line at Tilbury. The Orsova's main routes were Tilbury to Sydney via Suez stopping at Naples, Aden, Perth, Adelaide, Melbourne and Sydney.

After 8 years he gave up this job and bought his property, Sunpatch, in 1962 with the specific idea of breeding rabbits commercially, which unfortunately didn't work out due to a mystery virus and so he had to give it up. That is how he came to become a market gardener.

**His small market garden, which at one time also occupied much of the old allotments, specialised in growing alpine strawberries, which he provided for Buckingham Palace garden parties and London's top hotels for many years – he was very proud of this.**

Derek played cricket for about 15 years for Egerton and was Treasurer for most of that time, was Chairman of the Playing Fields Committee for a very long time and was on the Egerton Parish Council for 20 odd years, being Chairman for 15 of them, amongst other village activities, so he certainly played his part in village life.

When he retired from playing cricket in 1976 he renewed his interest in breeding rabbits. He successfully showed them throughout the country, winning many prizes and making many friends. A time of his life he really enjoyed.

In 2017 Derek generously decided to give to the village the gift of a large parcel of his land at Sunpatch on which could be created semi-sheltered accommodation units specifically designed for the older people of the parish. This gesture will mean a great deal to the village in perpetuity as a restriction will be placed on the land to prevent it from ever being sold or used commercially and remain for the benefit of the village, just like the recreation ground.



**SCARLETT**  
— Financial Services —

- Comprehensive range of Mortgages and Insurance
  - Free initial review
- Flexible appointment times available in our private meeting room, or home visits provided
  - Our friendly team manage the application process from start to finish
  - Over 10 years' experience in assisting clients with their finances

**To arrange an appointment with Joanne or Matt call 01233 800555 or email [info@scarlettfs.com](mailto:info@scarlettfs.com)**

---

Scarlett Financial Services is an appointed representative of Personal Touch Financial Services Limited which is authorised and regulated by the Financial Conduct Authority.

There will be a fee for mortgage advice, the amount will depend upon your circumstances.

A typical fee would be £295 payable at completion for the transaction.

**YOUR HOME MAY BE REPOSSESSED IF YOU DO NOT KEEP UP REPAYMENTS ON YOUR MORTGAGE.**

# The Garden in Spring

Tips for the amateur gardener from Dobbie's website



## February

- As days begin to lengthen, early spring bulbs and snowdrops start to colour the bare earth, a sign that spring is tantalisingly close. These longer days mean you can enjoy a little more time in the garden.
- Winter flowering shrubs that have finished flowering can be pruned now.
- Towards the end of the month prune summer flowering shrubs.
- Plant new hedges, trees and shrubs whilst they are still dormant
- Move any established trees and shrubs now.
- Top-dress your borders with a layer of mulch.
- Prune Wisteria now. Side-shoots shortened as part of their summer pruning, should be cut back to 2 or 3 buds to encourage strong flower buds.
- Hardy annuals such as Nigella, Cerinthe and Calendula can be sown now, in gaps where they are intended to flower.
- Finish cutting back faded cottage garden perennials.
- Plant new Roses.
- Dig vegetable beds, add plenty of compost as you go.
- Start potatoes into growth by 'chitting' them now in readiness for planting in around a months time. Spring clean your greenhouse or cold frames with mild detergent. Wash empty pots and seed trays ready for new sowings, rinsing well before use.
- Sow Sweet Peas under cover now to make strong plants ready for planting out in time for Easter. Soak the seeds for twenty-four hours in tepid water prior to sowing to help speed up germination, allowing 2 seeds per root trainer or deep pot.

## March

- Plant pots, hanging baskets and window boxes with a cheerful display of early season bedding plants including Pansies, Violas and potted bulbs.
- One of the most economical way to fill your tubs and baskets with colour this coming summer, is to grow your own bedding plants from young plants. Plant up immediately into small pots to grow on in a warm frost-free greenhouse or conservatory.
- Hoe borders to remove weeds, applying a thick layer of mulch over the surface to lock in moisture and help keep weeds at bay. Mulch, such as garden compost or well-rotted manure, also helps to improve the soil and give plants a well-needed spring boost.
- Feed borders with a general-purpose fertiliser. Don't forget to feed your hedges too.
- Prune summer flowering shrubs, such as Buddleia, Lavatera and hardy Fuchsias now to allow for fresh new growth bearing this year's flowers.
- Continue to plant new hedges, trees and shrubs.
- Sweet Peas can be sown outside now too, ready for picking later in the summer after earlier sowings have finished flowering, extending the cutting season.
- Plant summer flowering bulbs, such as Gladiolus and Ranunculus.
- Dahlias and Begonias should also be started into growth now under the protection of a frost-free greenhouse.
- If you haven't done so already, finish any pruning of roses before any new season leaves start to unfurl. Top dress with mulch and feed for the new season.
- Mulch existing rows of Raspberry canes and fruit bushes.

## April

- As the weather begins to get warmer and hedges and trees burst into blossom, April is a busy month in the calendar. It's an exciting time with sowings under way, new pot and border schemes to plant and longer daylight hours.
- April is a great time to refresh your tubs and baskets, pulling up any tired winter bedding plants, replacing with a display of colourful spring bedding plants and alpine troughs are easy to look after and make a lovely feature on the patio.
- Weeds will be starting to appear with the warming temperatures. The easiest way to control them is to hoe them off, applying mulch over the surface.
- Apply a slow release general-purpose fertiliser, lightly forked into your soil. Remember to include trees and hedges.
- If there are evergreen trees and shrubs that need relocating to a new home, April is the perfect month to move them, so long as the ground is not frozen or waterlogged.
- Lift and divide any herbaceous plants that have outgrown their allotted space. Splitting also helps to re-invigorate tired plants where flowering has diminished.
- Tie in stems of climbing roses and ramblers, positioning stems near to horizontal to encourage lots of flowers along their length. Give them a good feed and mulch well for the season ahead.
- April is a great month for planting new cottage garden plants, growing quickly in the warming soils.
- Pots of sweet pea started into growth last autumn or earlier this spring can be planted out now. Also position strong plants around the base of wigwam supports made from bamboo canes or hazel sticks.

## Winter Warmer from The Barrow House

The Barrow House has a take away option for those Winter nights when the sofa beckons - but there is nothing in the fridge...the fish is fresh, the fryers are stoked & the burgers are smoking with lip smacking sides. It's easy peasy, just come on up and tick the box! Get out, check out and take out! Monday to Sunday 12pm - 8pm. View the menu at [www.Thebarrowhouse.co.uk](http://www.Thebarrowhouse.co.uk). Call 01233 756599 to place your order or pop in and have a cheeky pint whilst you wait. Collection only. The pub also offers its fortnightly music event "live & local." The pub also has a special Monday night room offer. Visit the pub's website or call 01233 756599 for further information.

## CAPTIVeweBS

### INTERNET SERVICES

RR Domain registration & hosting  
Professional website design  
Interactive & effective marketing

### PRINTING

For logos, letterheads, leaflets & brochures  
Business cards, gift cards & invitations  
Economic full colour posters, small print runs

### FINE ART & PHOTOGRAPHIC

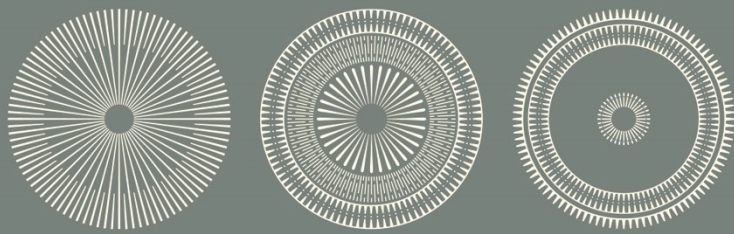
#### REPRODUCTION

Artwork & photographic scanning  
Including negatives & 35mm slides  
Fine art / photographic printing

**CALL 01233 756619**

[sandra@captivewebs.com](mailto:sandra@captivewebs.com)





## THE BARROW HOUSE

KITCHEN ♦ VILLAGE PUB ♦ ROOMS



THE STREET, EGERTON TN27 9DJ  
WWW.THEBARROWHOUSE.CO.UK

/BARROWHOUSE @BARROW\_HOUSE

### Download *Your Ashford* app today!

If you've ever been out in our town and spotted something that needs tidying up, you can now easily and conveniently report this via the **Your Ashford** app using your mobile device. You can also use the **Your Ashford** app to:

- Report environmental issues (flytipping, dog fouling etc.)
- Check recycling and refuse services



**EGERTON VILLAGE STORE & POST OFFICE**  
**TEL: 01233 756112**  
Convenience goods; off-licence; greeting cards;  
dry-cleaning agent  
Open M-F 8-6, Sat 8-2  
Post Office counter services; car tax; banking;  
cash withdrawal; Euros & \$.  
Open M-F 9-5:30; Wed 9-12:30; Sat 9-12:30

- Report missed bin collections
- Make payments online (e.g. Council tax)
- Find your local councillor
- Contact the Council (there is an option to create an account, so all correspondence will be in one place and both trackable and accessible 24/7).



### Ashford News in Brief:

#### 50 New Jobs at Chart Leacon

A disused train depot will reopen as part of extensive railway upgrades across the county. This once-thriving and busy railway maintenance depot is set to house Southeastern trains when the operator is ousted from the Hitachi depot in Station Road to make way for new Thameslink trains. There will be up to 50 new full-time staff needed, but it is not yet known exactly what roles will be created.

#### Plans for High-Speed Trains to Gatwick Rejected

Bold plans for a new high-speed rail services from Ashford to Gatwick in 25 minutes have been rejected by the Department for Transport (DiT) stating that the call for ideas sought market-led proposals to enhance our railways which were financially credible without government support.

### ANNUAL FLYPAST

A service to commemorate The 127 Canadian Wing and the American 362nd Fighter Groups who flew from our local airfield in Bedlam Lane will be held on **SUNDAY 1st SEPTEMBER 2019** at the Memorial in Bedlam Lane, Egerton/Smarden at 2.30 pm with a hopeful flypast arranged with Aero Legends of Headcorn Airfield of a Spitfire, Tiger and Harvard (weather permitting).

All are welcome - ample off road parking and light refreshments after the service/flypast.

**Further details please call  
01233 756 686.**

## Film Society: Special screening of by-gone Egerton

On the last Thursday evening every month the Egerton Film Society presents a varied programme of foreign, classic and current films. Anyone can attend – admission is priced at £4 for members and £5 for non-members. Doors open at 7pm. Here is our Spring programme:-

On Thursday 28<sup>th</sup> February, we are screening **"The Post"**, a compelling and highly satisfying political thriller directed by Steven Spielberg and starring Meryl Streep and Tom Hanks. Set in 1971, it is the real-life story of the unlikely partnership between The Washington Post's Katharine Graham (a gripping yet superbly understated performance by Meryl Streep), the first female publisher of a major American newspaper, and her hard-nosed editor Ben Bradlee (Tom Hanks), as they race to expose the massive cover-up, involving four Presidents, of the US government's 30-year involvement in the Vietnam war.

On Thursday 28<sup>th</sup> March we are showing a classic from the latter days of Hollywood's Golden Age, **"Bad Day at Black Rock"** starring Spencer Tracy, as the one-armed man who gets off the train at a sleepy desert hamlet to present a Japanese farmer with his son's posthumous medal and is greeted with hostility, threats and violence. Robert Ryan, Ernest Borgnine and Lee Marvin are marvellously vicious as the mean-spirited baddies. Director John Sturges' modern-day western is a powerfully tense, fast-paced suspense thriller with a grim social message about racial prejudice. Early Cinemascope is brilliantly used to capture the wide open spaces and an initial atmosphere of deceptive calm. This not to be missed 50's classic has the top 4 star rating in Halliwell's Film Guide and 5 stars from Radio Times.

There's a change of pace on Thursday 25<sup>th</sup> April, when we screen **"Shoplifters"**, the winner of the Palme d'Or at last year's Cannes Film Festival. Directed, written and edited by the acclaimed humanist Japanese film-maker Hirokazu Kore-eda, it is a masterful ensemble piece about a Tokyo 'family' that relies on shoplifting and living on its wits to cope with a life of poverty. Understated yet ultimately deeply affecting, this exquisitely performed film is both charming and heart-wrenching and is considered by many to be one of the most heartwarming and gratifying pieces of cinema from 2018.

Our 'Special Event' this spring's is on Thursday 16<sup>th</sup> May, when award-winning wildlife cameraman and film-maker Derek Budd returns to Egerton to talk about his career and introduce the films he made about life in the village while he was a resident here from 1982 to 2006. Derek's long and successful career included filming many episodes of the ITV series 'Country Ways', with one of them being about the village. The films to be screened tonight also show Egerton celebrating the 50<sup>th</sup> anniversary of the end of WW2 in Europe, the Apple Fair in 2000 and the film which helped us win the 2001 'Village of the Year' competition. Derek and his wife Caryl played an active part in the life of our community - it was Derek who founded our Film Society in 2000 - and we are delighted to welcome him back to Egerton.

## A.J. & N.M. CARR LTD

Private and Contract Coach Hire

\*\*\*

**DAY TRIPS / HOLIDAYS**  
**W1, GARDENING & SCHOOL GROUPS**  
**BRITISH LEGION & CHURCH GROUPS**  
**THEATRE TRIPS**  
**WEDDINGS**

\*\*\*

*'Let us assist with the arrangements for your outings'*

43/51/53 Seat Luxury Coaches  
 29/33 Seat Midi-Coaches



Pivington Works, Pluckley, Ashford, Kent. TN27 0PG  
 Tel: 01233 840651 e-mail: carrscoaches@btconnect.com

## New Footbridge Constructed



As part of the £102 million pound Junction 10A project to upgrade our local transport infrastructure, a new footbridge across the M20 at Kingsford Street, Mer-sham, in Ashford was built. This bridge will replace the existing Highfield Bridge, will link Kingsford Street to the A20 Hythe Road and is designed for pedestrians, cyclists and equestrians. Highways England has provided the following interesting facts about the new footbridge:

- The footbridge was built by Nusteel Structures in Hythe.
- 20 people were involved in building the bridge.
- The bridge weighs 45 tonnes - equivalent to nine hippos!
- Nusteel Structures and Jacobs designed the bridge, which took six weeks to build.

## Andrew Hopkins Hedge Cutting



With Tractor & High Reach Cutter

Newland Green, Egerton  
 01233 756364  
 (Mobile 07845 164169)

## GLASS 'N' GLAZE

Est 1984

Unit 4 Europa House  
 Pivington Mill, Pluckley  
 Ashford, TN27 0PG

## FOR THE COMPLETE GLAZING SERVICE

We specialise in double-glazed units, single glazing, greenhouse glass, lead lights, mirrors, shelves, tabletops, safety glass, secondary aluminium glazing

Misted and broken units replaced

**01233 840768**

**www.glass-n-glaze.co.uk**





## Your Parish Council Reports

*This section has been written to give you a flavour of the meetings and find out some of the projects being undertaken by Egerton Parish Council. The full minutes are available on the Parish Council Website*

### November Minutes

**Footpaths:** Three footpaths issues remain with no new items raised.

**Highways:** Road sign at Pemples Cross still outstanding. Two new issues raised with KCC - a depression in the road surface in Greenhill Lane and a request for a directional sign to the village hall from New Road.

**Village gateways:** KCC have been given the information requested in order to carry out costings for the installation work.

**Mobile phone signal:** A response has been received from Damian Green who will approach individual operators to put up a mast.

**Older People's Accommodation:** Awaiting return of Heads of Terms. The access to the new site is in hand and moving along slowly.

**Play area:** A councillor will sort out the swing chains that only have one link through the hasp at top there should be two links.

**Village sign opposite Barrow House:** A site visit has now been made. Awaiting results.

**Sweet chestnut tree:** The work has been done. Clerk has contacted tree surveyor to check that the work conforms to his report.

**Broadband in Mundy Bois area:** There has been no contact with KCC or BT, the Clerk will follow up.

**Storage unit for equipment:** A site meeting was held to consider the best place for the new building. Planning permission will be needed and plans drawn up. The tree warden will check if it will be necessary to remove a tree. Finances will need to be put in place.

**Salt/grit bags:** The Clerk has confirmed there are no old bags of salt left. The Clerk spoke with Tom Hope who now does the snow clearing and let ABC know the name and address for delivery of salt.

**CCTV:** The PC will look into the costs. The PC had received a report from PCSO Luke Jones who stated there had been no incidents of crime within the village. Following discussions the Chairman offered to write to the PCSO and detail incidents that had occurred. Lois noted there had been no reports within the Neighbourhood watch web site either.

**Brambles behind hall:** Councillors offered to have a site visit to clear the area behind the hall.

**Playing fields:** Councillors rejected a request to reduce height of some trees on lower rec.

### PH Oliver & SONS

Egerton, Kent TN27 9DR

**Motor Engineers**

**Tel: 01233 756255**

**MoT Testing and Servicing**



### Kilby's

**Chimney Sweeping**

**Wasps Nests  
and all other  
Pest Control**

**Tel 01233 840948**

**Mobile 07756 007428**

**Neighbourhood Plan Update:** The Chairman circulated a report to members. The housing survey was delivered. Anything unique within the village such as old fashioned signs or the view should be noted within the plan. The confines of the village survey will be carried out by the NHP committee, photos and a map will be put forward from previous works carried out. A meeting with EPC and NHP committees will be held in the New Year.

**Sale of shop:** The working group continue to hold meetings, the next is on 20<sup>th</sup> November.

**Christmas on the Glebe:** Arrangements are being made for this year's Christmas fair on The Glebe on Saturday 8<sup>th</sup> December. The Parish Council agreed to pay for the Christmas tree. The Clerk will keep the PC informed of progress.

**Commemorative bench:** The PC have been contacted by Royce and Kim Parker who kindly offered to purchase a bench to be placed within the village to commemorate 100 years since WW1. Members were delighted to accept this kind offer, agreed that the 'War Horse' bench would be most appropriate, and that they favoured placing it on the Glebe.

**Hedge cutting along New Road:** The Chairman offered to contact the landowner to get the hedge along New Road cut.

**Rocks alongside road at top of Green Hill Lane:** A councillor felt the rocks at the top of Greenhill Lane were too close to New Road.

## December Minutes

**Footpath and Stiles:** There are two unresolved footpath issues and one new issue where an oak bough has snapped and has made a tunnel over the wooden bridge in the Colebridge Wood area. This was reported.

**Highways:** There are no outstanding issues.

**Village Gateways:** KCC have given a very high installation cost if they carry out the works. KCC suggested we could use one of their approved contractors who could install

gates on behalf of KCC. This will be looked into. Once costs have been sourced funding can then be discussed.

**Notice boards:** The Chairman agreed to fix a hook/lock to right hand door which will not stay closed.

**Older people's accommodation:** Awaiting Heads of Terms to be returned to EPC by Court Royal. The access to new site is all in hand and moving along slowly.

**Play area:** The Clerk has received a quote to replace the three platforms on the play area with new anti slip plywood. This is a job that has been flagged up during the Wicksteed inspection. It was agreed the money should be spent.

**GDPR:** General Data Protection Regulation. The Clerk has received a report from Satswana with nine attachments with various details as to the way forward. The Clerk and our Borough Councillor will check to see if it is necessary for such a small parish to deal with this subject.

**Village sign opposite Barrow House:** A quote has been received to supply a hinged metal post. Before EPC agree to this price the Clerk will source another quote.

**Sweet chestnut tree:** The tree surveyor has checked the work that has been carried out on the tree and is satisfied.

**Broadband in Mundy Bois area:** The Clerk has put a resident of the area in touch with KCC to keep in contact with any developments.

**Storage unit for sports and recreational equipment:** The Chairman is looking into means of funding this essential project.

**CCTV:** Following discussions it was agreed that maybe CCTV was not necessary to be put up in the village at this time.

**Brambles behind hall:** Two parish councillors have made a splendid job of clearing the bank and path, thank you very much to both, it is most appreciated by all.

**Christmas on the Glebe:** All is in hand ready for the Fair.

The tree has been purchased and

installed and decorated, thank you to those concerned for this.

**WW1 Commemorative Bench:** Royce and Kim Parker have purchased the bench and fitted it in place on the Glebe. There will be an unveiling at 12.00 on Saturday 8<sup>th</sup> prior to the Glebe Christmas Fair. Thank you Royce and Kim for the kind donation.

**Beacon of Light:** Thank you to those who organised this even and to all those who attended the ceremony.

**Neighbourhood Plan Update:** Jane Carr circulated a report to members. The Chairman asked that EPC Cllrs showed more interest in the process by taking part in some of the meetings. EPC and the NHP committee will hold a joint meeting in the New Year, this will be open to the public. Thank you to the NHP Committee for all your hard work.

**WI 100 years-** Egerton WI celebrate their 100<sup>th</sup> birthday next year and would like to purchase a picnic table to be sited on the recreation ground somewhere. This was felt to be a good idea and will be discussed further at the January meeting.

**Kent Downs AONB:** They are offering 45 saplings for £66. A councillor will look into availability of trees and report back at January meeting.

## January Minutes

**Footpaths and Stiles:** The two unresolved issues are still unresolved and the new issue last month has been dealt with.

**Highways:** There is a new issue requesting a road name replaced back to the original—The first two houses down "Elm Close" are actually 1 and 2 New Road. Request accepted.

**Village Gateways:** The Chairman and the councillor leading this project will meet with Julian to discuss progress.

**Older People's Accommodation:** Progressing slowly. The owner of the land, Derek Marks, has sadly now passed away and the Chairman has asked to enquire of ABC if there was ever a 106 agreement on the bungalow, Sunpatch.

**Q: Are the centre circles the same size?**



**A: At Wilkins Kennedy we help you see clearly!**  
Ashford, Canterbury, Maidstone, Orpington, Sandwich.

**WILKINS • KENNEDY**  
CHARTERED ACCOUNTANTS  
& BUSINESS ADVISERS

[www.wilkinskennedy.com](http://www.wilkinskennedy.com)



*Laser @ The Fig Tree*

**ALL CONSULTATIONS FREE**

Laser Hair Removal, Skin Regeneration, Skin Tightening, Thread Veins, Pigmentation, Fungal Nail Infections and Age Spots

The Fig Tree Spa  
Lenham Square, Lenham  
Kent ME17 2PG

07887 726775 or 01622 850880

[www.laseratthefigtree.com](http://www.laseratthefigtree.com)  
[laseratthefigtree@gmail.com](mailto:laseratthefigtree@gmail.com)



# WGJ Plumbing

Warren Johnson

**Your Local Plumber**

Tel: 01233 840003

Mob: 07936 408853

All aspects of plumbing undertaken including:

Oil Boilers: service / repair	Rayburns / AGA's: service
Radiators: move / new	Waste pipes: blocked
Float valves: repair / replace	Showers: leaking / replace
Hot water cylinders: replace	Taps: dripping / replace
Immersion heaters: replace	Toilets: won't flush / or leak

Free estimates / No call out charge  
Sensible rates / Fully insured

**Storage Unit for Sports and Recreational Equipment:** The Chairman and a councillor are looking into the siting and funding of this project and would like to progress this project as soon as possible to rehome the marquees, Christmas fair huts and other village equipment which are held at the moment in unsuitable conditions.

**Bundles of Sapling:** There are different bundles of saplings to be purchased, depending on soil type. An article will be placed in the next Egerton Update and await any response from villagers wanting a bundle for their gardens etc.

**PCSO:** Despite there having been three burglaries in Egerton in the past month, no report has been received from our PCSO.

**Neighbourhood Plan:** The Parish Council committee will have a combined meeting with the Neighbourhood Plan committee to discuss the progress of the

Plan and in particular the results of the housing needs survey on 22nd January.  
**Sale of Shop:** Things are progressing towards a successful outcome for the sale of the shop between the current owners and a prospective purchaser. The shop will be closed for approximately six weeks to update and re-stock. The grants and funds raised by the Community Benefit Society (CBS) have been used to pay for the valuation and should be sufficient to cover the other costs incurred. Egerton Village Stores Ltd. will remain dormant in case a need arises in the future. The team

were thanked for all their hard work.

**Dog Fouling on Parish Council Land:** The Playing Fields Committee sent a report of their recent AGM and committee meeting to the Parish Council during which they asked for clarification on certain aspects of insurance cover concerning the ongoing problem of dog fouling in and around the recreation grounds. They gave several options for an action plan:

- (i) maintain the status quo but erect more warning notices;
- (ii) only allow dogs on leads on the playing fields;
- (iii) only allow night-time walking of dogs (when owners can't see what their dogs are doing) on the playing fields if on leads (but allow 'off-lead' during the day);
- (iv) ban dog walking on playing fields at night;
- (v) ban all dogs from the playing fields at all times.

The Clerk will look into the insurance side of the matter.

**Salt/Grit Bins:** A councillor has kindly taken responsibility for ensuring the village's salt bins are full and equipped with a shovel. Salt has been delivered for the village use if/when necessary.

## RAY JILES

## TREE WORK

NPTC CERTIFIED CONTRACTOR

*Local Village Man with over 25 years experience in all aspects of tree surgery.*

Re-shaping, Crown reduction, Sectional felling of dangerous/dying trees. Site Clearance. Hedges topped and shaped. Logs and wood chippings supplied. Fully Insured.



Free quote up to 20 mile radius of Charing  
Telephone 07720 034149 or 01233 611939

## Help with litter



**Thorneloe & Co.**  
Solicitors



An independent family practice providing a friendly, high quality, personal service tailored to your specific needs. Specialists in a range of legal services:

- Wills
- Estate Administration
- Trusts & Taxation
- Lasting Powers of Attorney
- Court of Protection
- Residential Conveyancing
- Commercial Conveyancing
- Re-mortgaging
- Equity Release
- Buy-to-Let

01622 859 416

e: [thorneloe@thorneloe.co.uk](mailto:thorneloe@thorneloe.co.uk) w: [www.thorneloe.co.uk](http://www.thorneloe.co.uk)

St Mary's House, The Square, Lenham, Kent ME17 2PH

Authorised and regulated by the Solicitors Regulation Authority Registered Number 70429

Can you spare an hour or two to come and help us clean up the village?



**Saturday**

March 23rd is the date for our annual village clean up and we are looking for volunteers to come along and help us pick up litter in the village environs. All you have to do is to turn up at 10am on the car park at the village hall and all equipment will be provided.

# VILLAGE DIARY

## Regular Weekly

Mon	Tue	Wed	Thu	Fri	Sat	Sun
10.30 am Zumba (GB)	6pm Yoga (VH) 7pm Short Mat Bowls (GB) 7.45pm Yoga (VH)	9am ERC (SP) 11 to noon Eg. Friends (Barrow House) 2.30pm Library (See schedule) 6pm ERC (cycling - see website)	1.30pm Yoga (VH)  7pm ERC Circuits (GB)	8.45am ERC (SP) 9.30am Pilates (GB) 1.30 Short Mat Bowls (GB) 2pm Farmers Market (VH)	10am - 12pm Egerton Computer Centre	9am ERC (see website)

## February 2019

Mon	Tue	Wed	Thu	Fri	Sat	Sun
				1	2	3
4	5 8 pm EPC (VH)	6 Eg. Friends, Barrow House WI 7.30pm (VH)	7	8	9 Laughing Club. PVH 10.30-Noon	10
11 2pm Over 60s AGM (VH)	12	13 Eg. Friends, Barrow House 2.30pm DFAS (VH)	14	15	16	17
18	19	20 Eg. Friends, Barrow House 7pm PEGS talk VH	21	22	23 Laughing Club. PVH 10.30-Noon	24
25	26 8pm Egerton Folk & Blues. (BH)	27 Eg. Friends, Barrow House	28 7.00-7.30 EFS (VH)			

### Key to diary: Venues

BH = Barrow House  
EPS = Egerton Primary School  
GB = Games Barn  
PVH = Pluckley Village Hall  
SJC = St. James' Church  
SP = Sports Pavilion  
VH = Village Hall

### Key to diary: Clubs & Societies

ECC = Egerton Cricket Club  
EFBC = Egerton Folk & Blues Club  
EFS = Egerton Film Society  
EMC = Egerton Music Club  
EMF = Egerton Music Festival  
EPC = Egerton Parish Council  
ERC = Egerton Running Club



# March 2019

Mon	Tue	Wed	Thu	Fri	Sat	Sun
				1	2	3
4	5 EPC 8pm (VH)	6 Eg. Friends, Barrow House WI 7.30pm (VH)	7	8	9	10
11 2pm Over 60s (VH)	12	13 Eg. Friends, Barrow House 2.30pm DFAS (VH)	14	15	16	17
18	19	20 Eg. Friends, Barrow House	21 7.30 Parish Assembly VH	22 7.30 (VH) Eg. Players, 2 One-Act plays	23 10am Village Clean up. 7.30 (VH) Eg. Play- ers, 2 One-Act plays	24
25	26 8pm Egerton Folk & Blues. (BH)	27 Eg. Friends, Barrow House	28 7.00-7.30 EFS (VH)	29	30 7.30pm Head- corn Scouts Quiz VH	31

# April 2019

Mon	Tue	Wed	Thu	Fri	Sat	Sun
1	2 EPC 8pm (VH)	3 Eg. Friends, Barrow House WI 7.30pm (VH)	4	5	6	7
8 2pm Over 60s (VH)	9	10 Eg. Friends, Barrow House 2.30pm DFAS (VH)	11	12	13 COPY DATE For Magazine	14
15	16	17 Eg. Friends, Barrow House	18	19	20	21
22	23	24 Eg. Friends, Barrow House	25 7.00-7.30 EFS (VH)	26 7pm Fund raising Quiz (Alzheimer's Research) VH Comedy Night R&C	27	28
29	30 8pm Egerton Folk & Blues. (BH)					

# Useful Village Contacts List

## Council

Member of Parliament	Damian Green	01233 820911
County Councillor	Charlie Simkins	01233 756705
Borough Councillor	Geraldine Dyer	01233 770213
Parish Councillors:	Richard King (Chairman), Peter Rawlinson (Vice Chairman), Jennifer Buchanan, Claire Foinette, Graham Howland, Ambrose Oliver, Tim Oliver, Pat Parr, Rob Walker	
Parish Clerk	Heather James	01233 756501
Footpaths Representative	Pat Parr	01233 756601
Tree Warden	Graham Howland	07875523699

## Church

G7 Benefice Rector	Revd. Sheila Cox	01233 712598
Youth & Families Minister	Mim Oliver	07725 112141
Egerton Free Church	Revd. Ambrose Oliver	01233 756459
Egerton Churchwarden	John Lumley	01233 756249
PCC Secretary St James'	Jan Burgess	01233 756147
Flowers St James'	Priscilla Harper	01233 756437
Bellringers St James'	Mike Yarrow	01233 756387
Friends of St James'	Dick Crabb	01233 756517
Kent God's Acre Project	Sarah Widd	01233 756460

## Schools & Playgroups

Egerton Primary School	Julia Walker	01233 756274
Egerton Pre-School	Emily Leggat (Manager)	07773 600982

## Clubs & Organisations

Air Training Corps (Ashford Squadron)		01233 637035
Bethersden Cub Scouts	Mary Ford	01233 820989
Egerton Film Society	Richard King	01233 756592
Egerton Friends	Elaine Graham	01233 756137
Egerton Housing Association	Sue Palmer	01233 756686
Egerton House Arts	Bryan and Bonnie Gipps	01233 756354
Egerton Computer Centre	Carol Hulm	07990 574214
Egerton Players	Vanessa Perrin	01622 851854
Egerton Over Sixties Club	Jenny/Theo Oliver	01233 756452
Egerton Village Hall Bookings	Jim Cooke	01233 756630
Egerton Women's Institute	Jackie Parry	01233 713801
Headcorn Scouts Group	Ann Carroll	01622 890061
Weald of Kent Preservation Society	Gale King	01233 756592
Egerton Decorative & Fine Arts Society	Sue Lewry (s.lewry@talk21.com)	01233 647137

## Sport

Egerton Games Barn Bookings	Joan Smyth	01233 756556
Egerton Sports Pavilion Bookings	Bill Smyth	01233 756556
Egerton Cricket Club	Paul Hope	07885 509751
Egerton & Pluckley Junior Football Club	John Harrison	01233 756693
Egerton Running Club	Sarah Elworthy	01233 756205
Egerton Short Mat Bowls	Mike Yarrow	01233 756387
Egerton Walking Group	Phil and Shirley Missing	01233 756345

## Emergencies, Care & Services

Ashford Borough Council (emergency out-of-hours 629911)		01233 331111
Ashford Citizen's Advice Bureau	www.ashfordadvice.org	01233 626185
Doctors' Surgeries	Charing	01233 714490
	Headcorn	01622 890294
	Lenham	01622 858341
Dog Warden	Colin Leek	01233 330340
Electricity	All Companies	105
Flytipping	Kent Waste Watch	0845 345 0210
Gas Leaks	British Gas	0800 111 999
Highway Services	www.kent.gov.uk/roads-and-travel	0300 041 8181
Hospital	William Harvey	01233 633331
Neighbourhood Watch	Lois Tilden	01233 756221
NHS Direct	www.nhsdirect.nhs.uk	111
Police Non-Emergency		101
PCSO	Oliver Welch	
South East Water (supply) (emergency 0845 603 2603)	Leak Line	0800 614 366
Southern Water (sewerage)	Blockages, Pumping Station Failure	0845 278 0845



# DIRECTORY OF ADVERTISERS

## Accountancy

AIMS (Alison & Gary Robinson)	4
Wilkins Kennedy	30

## Beauty

Laser @ The Fig Tree	30
----------------------	----

## Builders & Building Supplies

A T Palmer	21
B J Luckhurst	19
Egerton Builders	24
Total Roofing & Building Services	11

## Carpets & Rugs

Joshua Lumley	10
---------------	----

## Car Repair

MVR Vehicle Repairs	9
P H Oliver & Sons	29
Phipps Motors	13

## Chimney Sweep

Kilbys	29
--------	----

## Chiropody & Foot Care

Mrs Afsaneh Smith	5
Podplus	35

## Chiropractor

Dr Philip Petts	18
-----------------	----

## Coach & Car Hire

AJ & NM Carr Ltd	28
Wealden Wheels	7

## Coal Merchants

Fordhams Coal	5
---------------	---

## Computing (See I.T.)

## Decorators & Painters

Home Decorating Services	10
R J Moss Ltd	35
S I Parr	3

## Drainage

R J Hopkins	8
-------------	---

## Education

Egerton C of E School	8
Egerton Pre School	8
Mrs Jane Cooper - Piano	3

## Engineering

JD Mills Engineering	23
----------------------	----

## Estate Agents

Hobbs Parker	22
Saddlers	2

## Fencing

R James & Sons Fencing	8
------------------------	---

## Financial Planning

Scarlett Financial Services	25
Wilkinson Wealth Management	36

## Gardening & Garden Supplies

Andrew Hopkins (Hedge Cutting)	28
Mower Plant Services	21
Ray Jiles (Tree Surgeon)	31
TW Paving	24

## Glaziers

Glass 'n' Glaze	28
-----------------	----

## Health & Fitness

Life Balance Yoga	14
Myofascia Referrals	13
Yvonne Fernando	14

## Heating & Fuel

Fordhams Coal	5
Nigel Collison Fuels	5

## Insurance

Cascade Insurance	12
Wealden Insurance	13

## I.T.

Captivewebs	26
Chrysalis Computer Solutions	5
Egerton Computer Centre	4

## Newspaper Delivery

Jackie's News	17
---------------	----

## Osteopath

Angelina Lumley	17
-----------------	----

## Pest Control

Kilbys	29
--------	----

## Plant Hire

R J Hopkins	8
-------------	---



**Painting & Decorating**

Richard 07974 815124  
 Luke 07912 604533  
 Office 01795 480647  
 Email- rjmossltd@sky.com

## Plumbing/Water Filters

Rich Gordon	3
WGJ Plumbing	31
Hydroworks	19

## Printers

Captivewebs	29
-------------	----

## Pubs

Rose & Crown	6
The Barrow House	27

## Rubbish Removal

J Skilton 4 Rubbish	9
---------------------	---

## Shops

Egerton Farmers Market	29
Pluckley Farm Shop	18
Weald Smokery	15

## Solicitors

Kingsfords	11
Thorneloe & Co	31

## Sports Pavilion Room Hire

Egerton Sports Pavilion	13
-------------------------	----

## Window Cleaner

Luke Epps	15
-----------	----



**CHIROPODY & PODIATRY**

+Hard skin  
+Verruca  
+Nail cutting

+Corns  
+Ingrown nails  
+Insoles

+Community group visits  
+Free Parking +Disabled access

**Podplus Shop & Clinic**  
 Julie Rose Stadium, Ashford TN24 9QX  
 01233 660 851 www.podplus.co.uk  
 info@podplus.co.uk

# ML WILKINSON WEALTH MANAGEMENT LTD

We provide a local face to face comprehensive financial  
planning service with 25 years' experience  
for individuals, families and businesses



Protection of your Income and Family  
Retirement Planning  
Investments  
Estate Planning and Inheritance Tax  
Care Planning for the elderly/incapacitated

**For enquiries or a meeting please contact us on:**

Office 01233 840783 or 01634 221288  
Mobile 07999 042 726  
E Mail [martin.wilkinson@sjpp.co.uk](mailto:martin.wilkinson@sjpp.co.uk)  
[nicola.ridgewell@sjpp.co.uk](mailto:nicola.ridgewell@sjpp.co.uk)  
Website [www.wilkinsonwealth.co.uk](http://www.wilkinsonwealth.co.uk)

**Martin Wilkinson APFS, Certs CII (MP & ER) – Director and Chartered Financial Planner**  
**Nicky Ridgewell – Client Relationship Manager**

The Partner Practice represents only St. James's Place Wealth Management plc (which is authorised and regulated by the Financial Conduct Authority) for the purpose of advising solely on the group's wealth management products and services, more details of which are set out on the group's website [www.sjp.co.uk/products](http://www.sjp.co.uk/products). The title 'Partner Practice' is the marketing term used to describe St. James's Place representatives